

DataMAX Software Group, Inc.
El Dorado Hills, CA
USA

Deltek Costpoint – Purchasing: PO Receipts

This application will receive a line on a purchase order (PO).



RFgen Functional Documentation 2019

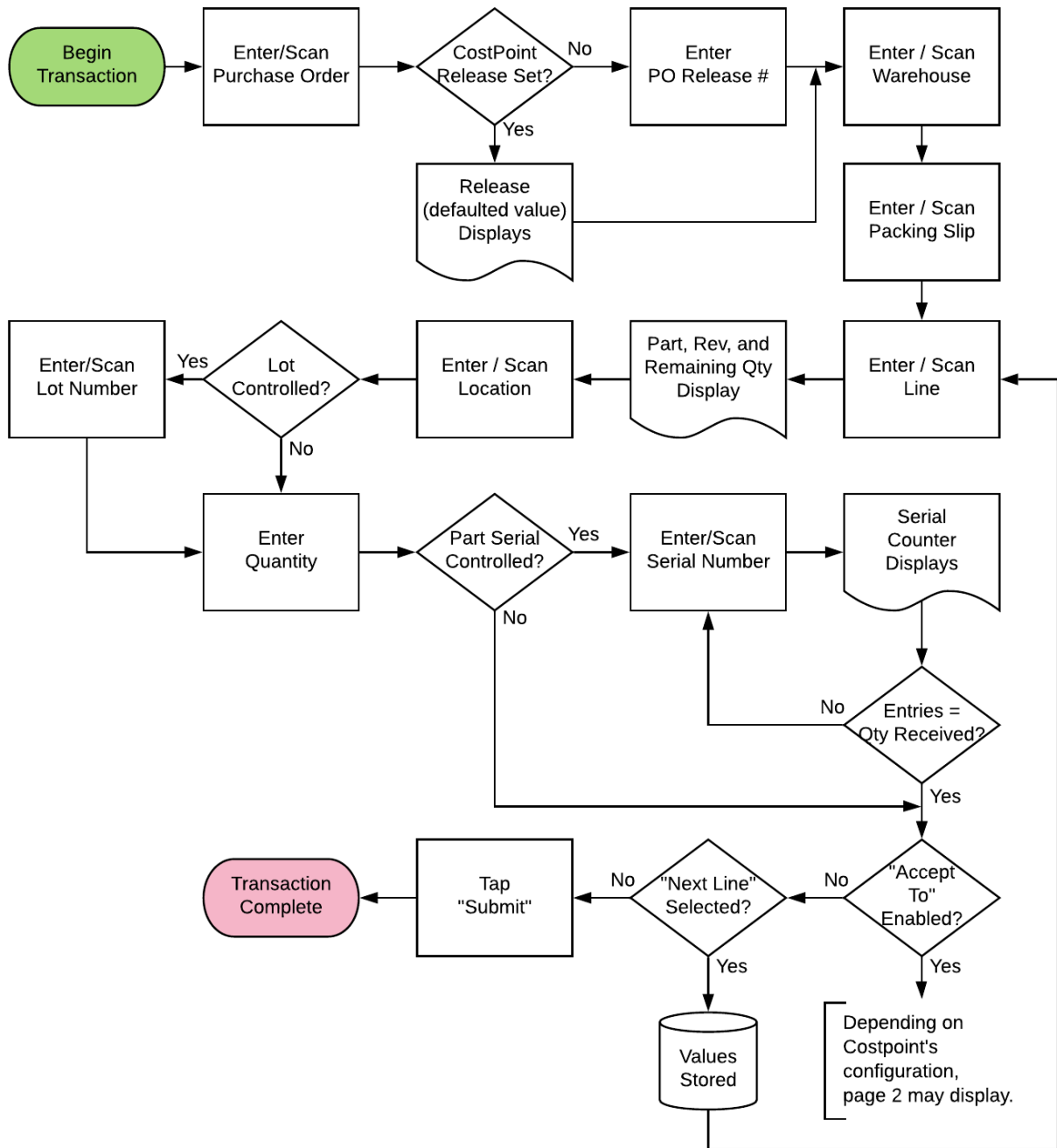
RFgen provides its customers Costpoint-validated, ready-to-use suites of “Open Source” applications and a development environment that can be used to create new apps or to modify existing apps.

This document describes the business workflow and technical information used in this application.

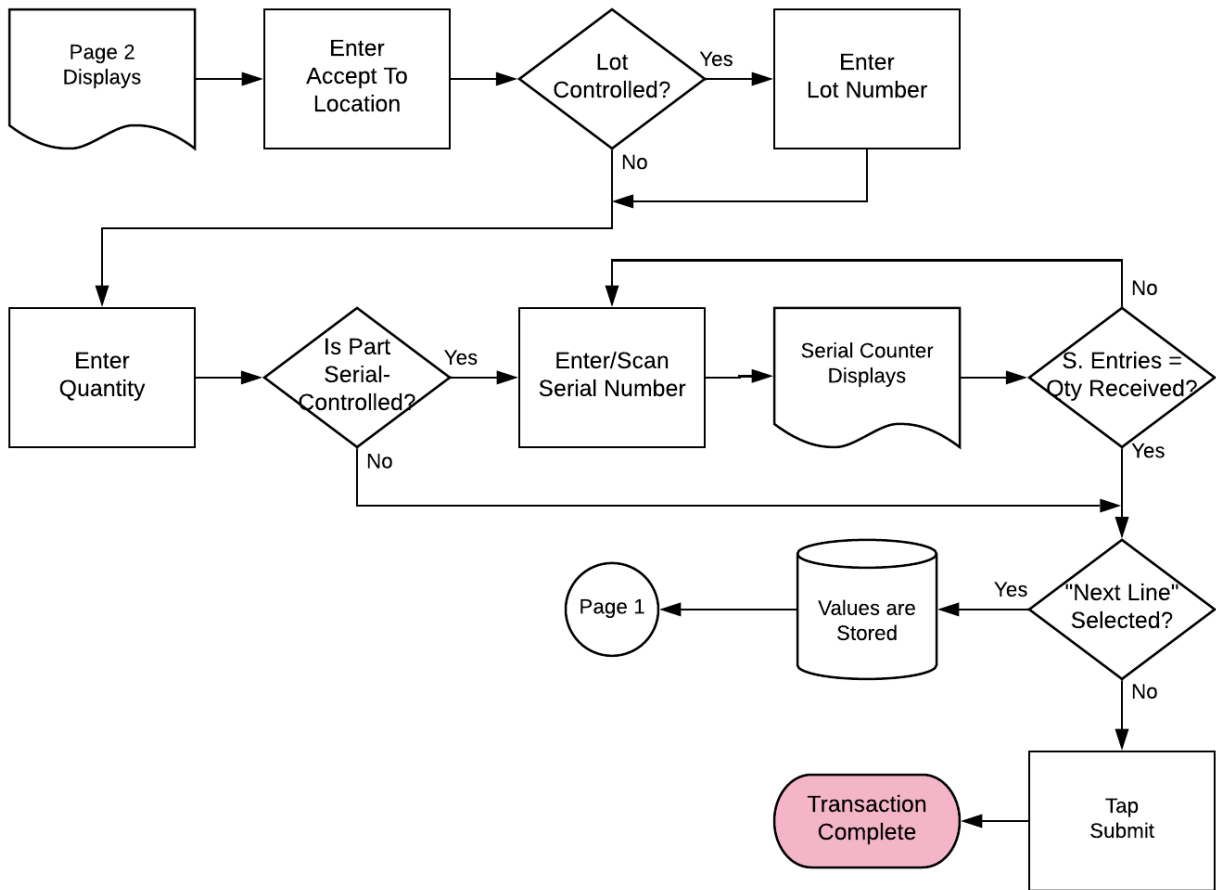
Deltek. | Marketplace
Partner

RFgen.

Costpoint: Purchasing - PO Receipts Workflow (1 of 2)



Costpoint: Purchasing - PO Receipts Workflow (2 of 2)



FIMPQ0300 Purchasing – PO Receipts

This application transfers all parts associated with one project to another project with a single submission.



Description of Workflow (1 of 2)

First the user enters, scans, or searches a purchase order (PO). If the PO release number can be determined, it will be defaulted. Otherwise the user scans, enters, or searches for a PO release number.

The user enters, scans, or searches a warehouse value if one is not defaulted automatically from the user properties.

The user scans or enters a packing slip number (PackSlip). This number must be unique per the line being received.

The user enters, scans, or searches a line number on the purchase order. The part on that line will be displayed along with the part's revision and remaining quantity to be received for that line.

The user enters, scans, or searches a Location (Locn).

If the part is lot-controlled, the user scans or enters a lot number.

The user enters the quantity (Qty) of the part they wish to receive.

If the part is serial-controlled, the user scans or enters a serial number (Serial). A counter to the right of the serial field accumulates how many

serials are entered. The focus stays in the Serial field until the same number of entries match the quantity to receive. If the user presses **Enter** with the field blank, the application will reduce the received quantity to the number of serials entered.

If the user taps the **Next Line** button, the entered values will be stored and accumulated with other parts until the **Submit** button is tapped on either page 1 or page 2. The application will then reset back to the Line field.

If the user taps the **Submit** button, the application posts all the parts to Costpoint and restarts the application.

A **Submit** button may show on page 1 if coming back from page 2 and after accumulating parts to receive. It posts the list of parts to Costpoint and restarts the application.

The arrow in the upper left corner will take the user back to the menu.





Description of Workflow (2 of 2)

Page 2 displays if Costpoint configuration is setup to take the user to the Accept To field where he or she enters Accept To information.

The user enters, scans, or searches an Accept To Location (Locn).

If the part is lot-controlled, the user will scan or enter a Lot number.

The user enters the quantity (Qty) of the part they wish to accept.

If the part is serial-controlled, the user will scan or enter a serial number. A counter to the right of the serial field will accumulate how many serials are entered. The focus will stay in the Serial field until the same number of entries match the quantity to receive.

If the user presses **Enter** with the field blank, the application will reduce the issue quantity to the number of serials entered.

If the user taps the **Next Line** button, the entered values will be stored and accumulated with other parts until the **Submit** button is tapped on either page 1 or page 2. The application will then reset back to the Line field.

If the user taps the **Submit** button, the application posts all the parts to Costpoint and restarts the application.

The double arrows in the upper left corner will take the user back to page 1.

Technical Information

The following describes the tables used for validation, search lists, or functions for a given prompt in this application. If applicable, the default property is also included.

Prompt	Validation / Search – Tables / Web Method	Default Property
PO	PO_HDR	
Rel	PO_HDR	
Whse	WHSE	User Property "WarehouseId"
PackSlip	RECPT_HDR	
Line	PO_LN / PART / ITEM	
Locn	WHSE_LOC	
Lot	INVT_WHS_LOC_SR_LT	
Qty		
Serial	INVT_WHS_LOC_SR_LT	
Locn	WHSE_LOC	
Lot	INVT_WHS_LOC_SR_LT	
Qty		
Serial	Not previously entered	
App Update	RCMPORC web service	

