

# Deltek Costpoint: Production - Issue Manufacturing Order by List

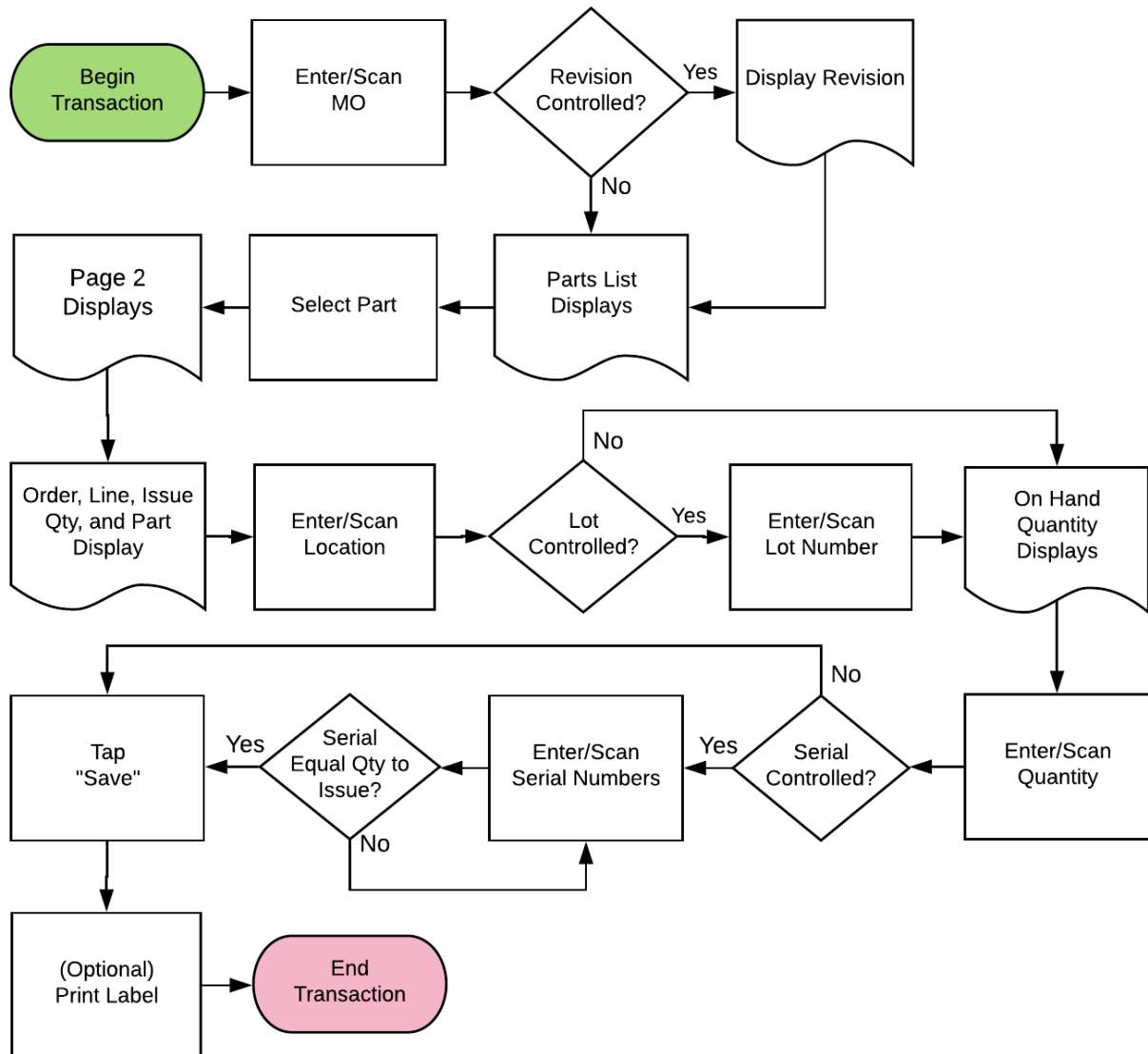
This application issues parts to a Manufacturing Order. Instead of having the user enter the parts being issued, they select them from a list.

## RFgen Functional Documentation 2019

RFgen provides its customers Costpoint-validated, ready-to-use suites of "Open Source" applications and a development environment that can be used to create new apps or to modify existing apps.

This document describes the business workflow and technical information used in this application.

## Costpoint: Production - Issue to Manufacturing Orders by List Workflow



## FPRII0320 Production – Issue to Manufacturing Orders By List

This application issue parts to a Manufacturing Order (MO). First it collects all the MOs, then it suggests the most efficient path through the warehouse for picking all parts.



### Description of Workflow (1 of 2)

First the user scans, enters, or searches a Manufacturing Order (MO).

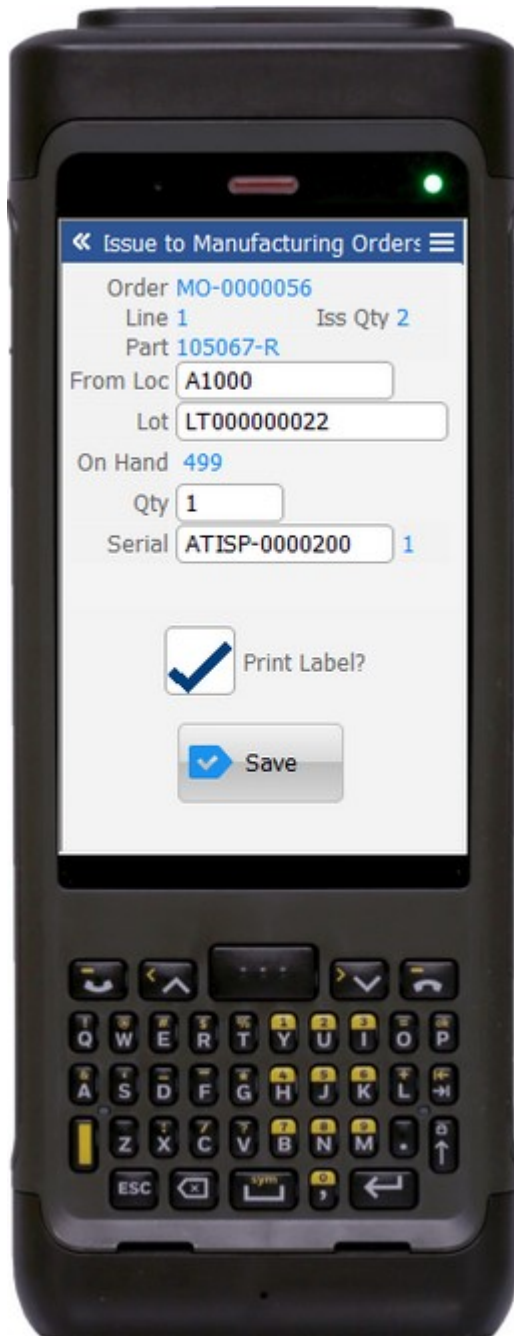
The order's revision will show if there is one.

A list of parts, lines, abbreviations, issue quantity, and remaining quantity display.

The user taps the part they wish to issue and are taken to page 2.

A **Reset** button may display on this page after the issuing is completed, and the user wants to reset the whole application.

The arrow in the upper left corner will take the user back to the menu.



## Description of Workflow (2 of 2)

Page 2 displays for the part selected in Page 1.

The order number, line number, issue quantity, and part number display.

The user scans, enters or searches a location.

The on-hand quantity for that part and location displays.

If the part is lot-controlled, the scans, enters or searches a lot number.

The on-hand quantity will be recalculated including the lot value and display.

The user enters the quantity of the part they wish to issue to the MO.

If the part is serial-controlled, the user scans, enters or searches a serial number. A counter to the right of the serial field will accumulate how many serials are entered. The focus will stay in the Serial field until the same number of entries match the quantity to issue.

The user may check the **Print Label** box to print labels after the **Save** button is selected.

The user taps the **Save** button when they complete the page.

After posting the issue to Costpoint, the list on page 1 is refreshed and the user is taken to page 1 to select a new line.



## Technical Information

The following describes the tables used for validation, search lists, or functions for a given prompt in this application. If applicable, the default property is also included.

Prompt	Validation / Search – Tables / Web Method	Defaults
Order	MO_HDR / MO_RQMT	User Property "Printer"
Part List	MO_RQMT / PART / ITEM	
From Loc	WHSE_LOC / INVT_WHSE_LOC	
Lot	INVT_WHS_LOC_SR_LT	
Qty	NA	
Serial	INVT_WHS_LOC_SR_LT	
App Update	PCMMOISS web service	
Order	MO_HDR / MO_RQMT	
Part List	MO_RQMT / PART / ITEM	

