

# SAP

## PRODUCTION ORDER – ORDER CONFIRMATION

---

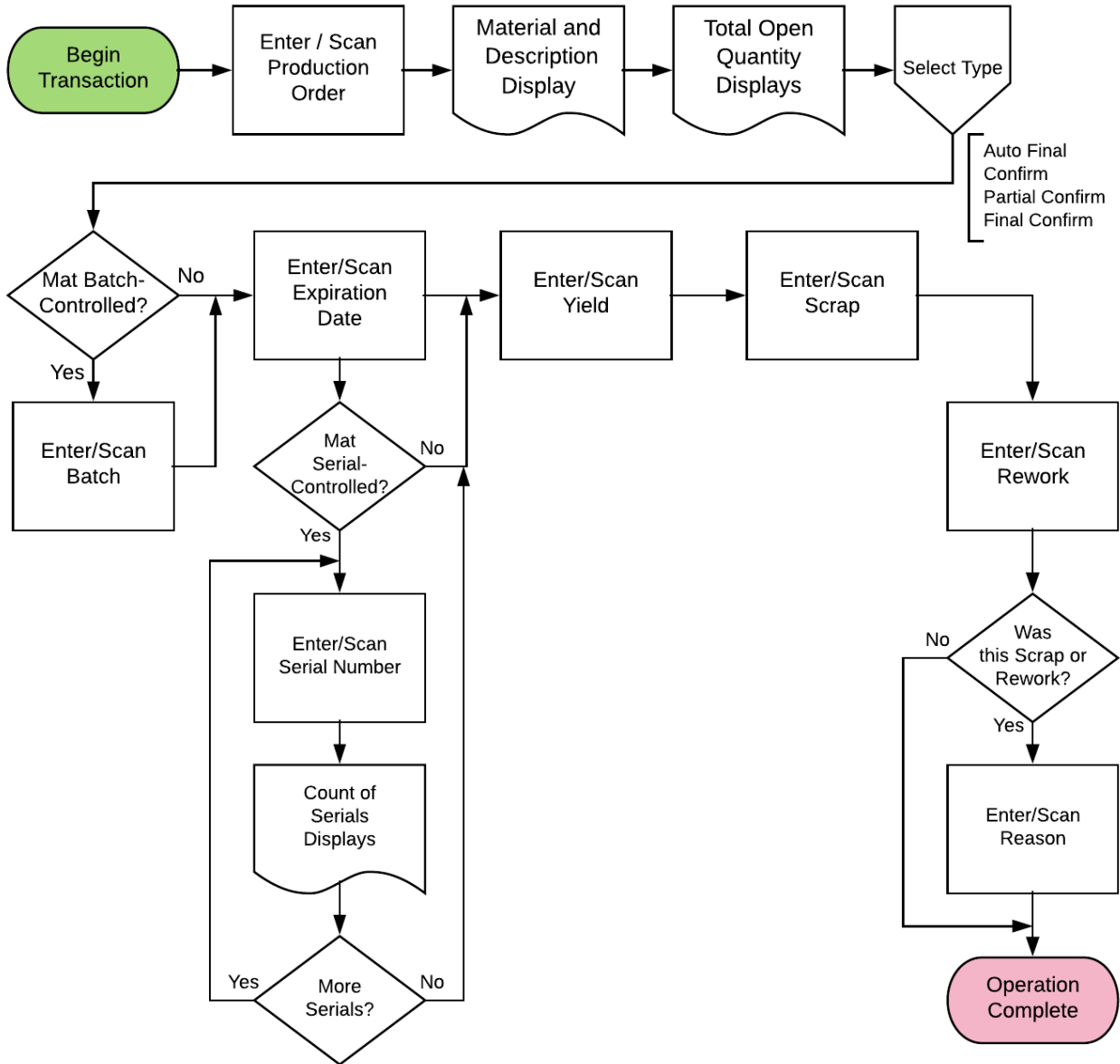
This application completes a production order and sets the order to either a partial completion or final completion.

RFgen Functional Documentation  
2019

RFgen provides its customers SAP-validated, ready-to-use suites of “Open Source” applications and a development environment that can be used to create new apps or to modify existing apps.

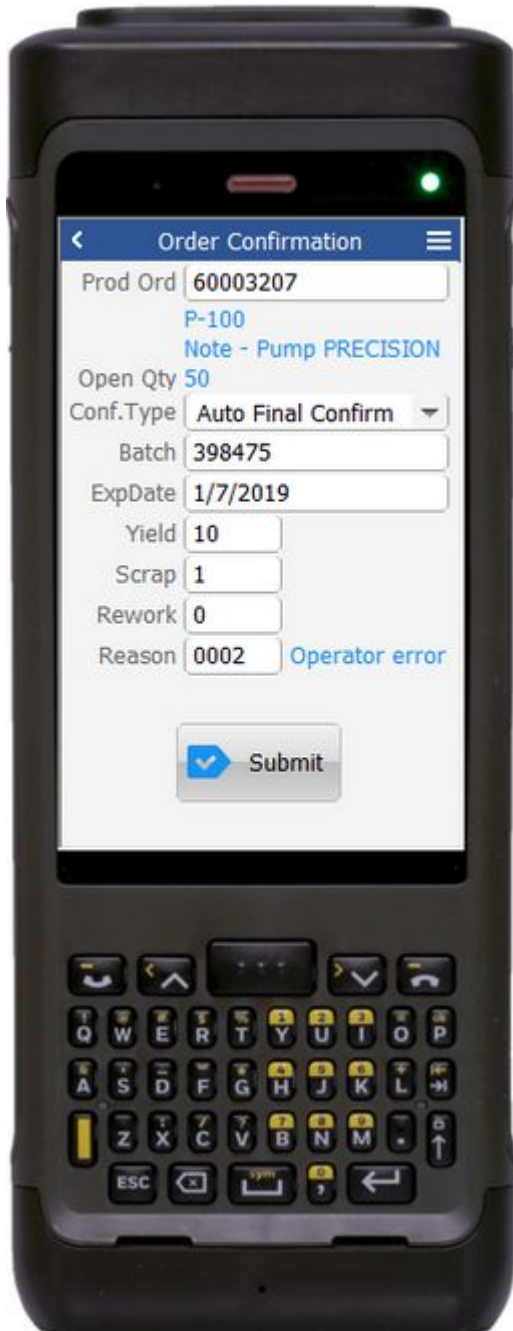
This document describes the business workflow and technical information used in this application.

# SAP Production Order (PR) – Order Confirmation



## FPRRC0200 PR – Order Confirmation

This application completes a production order and sets the order to either a partial completion or final completion.



### Description of Workflow

First user scans or enters a released but not finalized production order.

The material, material's description, and total open quantity are displayed.

If the material is batch-controlled, the Batch field will be visible.

If the material is serial-controlled, the Serial field will be visible.

The user can choose between a Partial confirmation, Final confirmation, or letting SAP determine the status based on the quantities yielded. Auto Final Confirm is the default.

The user scans, enters, or searches for a batch number that is assigned to the material specified.

The user enters the expiration date of the material created at this operation if necessary.

If entering serial numbers, the Serial field will continue to have focus until the user taps the **No More Serials** button.

A counter will track the number of serial numbers entered.



The user enters the yield for this operation. The value defaults to the expected quantity.

The user can enter any scrap quantity if any is produced but the default is zero.

The user can enter any rework quantity if any is produced but the default is zero.

If there is scrap or rework, the Reason field is displayed.

After the last visible field is entered the **Submit** button displays. The **Submit** posts the completed order to SAP and resets the application.

The arrow in the upper left corner will take the user back to the menu.

## Technical Information

This lists the tables used for validations, searches and defaults by prompt.

Prompt	Table
Prod Ord	AFPO / AFKO / AFVC / MARA / MARC / BAPI_MATERIAL_GET_DETAIL / BAPI_MATERIAL_GETLIST / BAPI_PRODORDCONF_GET_TT_PROP
Conf Type	Defaulted in code
Batch	NA
ExpDate	NA
Serial	SER05 / OBJK / EQUI / JEST
Yield	NA
Scrap	NA
Rework	NA
Reason	TRUGT
App Update	BAPI_PRODORDCONF_CREATE_TT / BAPI_TRANSACTION_COMMIT / BAPI_GOODSMVT_CREATE

