

# SAP

## PRODUCTION ORDER – OPERATION

### CONFIRMATION

---

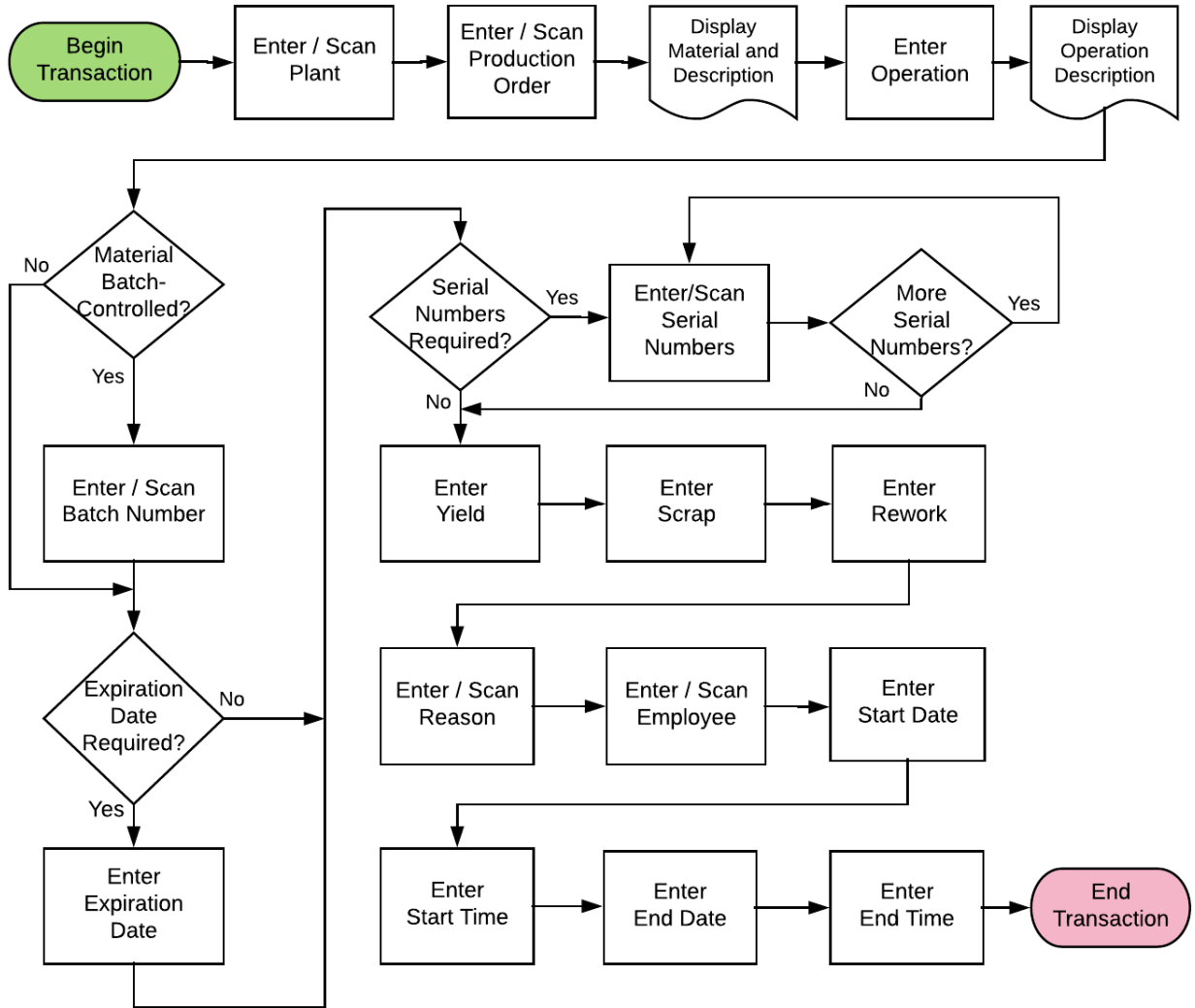
This application confirms one operation in the manufacturing process and records the quantity yielded.

RFgen Functional Documentation  
2019

RFgen provides its customers SAP-validated, ready-to-use suites of “Open Source” applications and a development environment that can be used to create new apps or to modify existing apps.

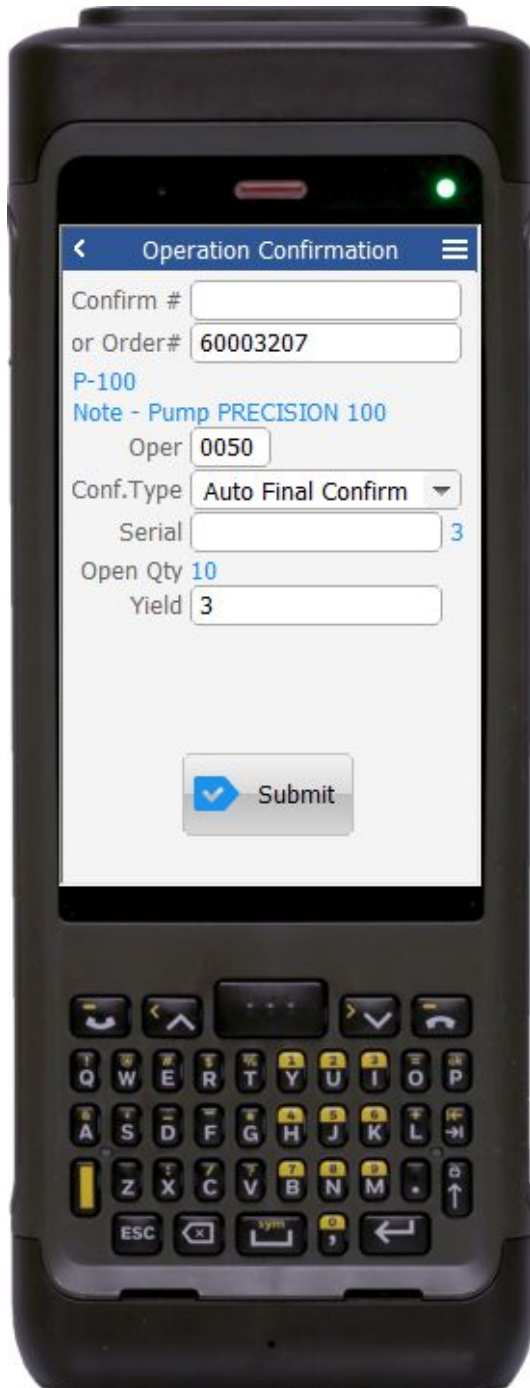
This document describes the business workflow and technical information used in this application.

# SAP Production Order (PR) – Operation Confirmation



## FPROC0200 PR – Operation Confirmation

This application confirms one operation in the manufacturing process and records the quantity yielded.



### Description of Workflow (Page 1 of 2)

First the user scans, enters, or searches for a plant value if one is not defaulted from the user's profile.

The user then scans, enters, or searches for a released but not finalized production order.

The material and the material's description are displayed.

If the material is Batch-controlled, the Batch field will be visible. If the material is serial-controlled, the Serial field will be visible.

The user scans, enters, or searches for the operation for which the yield is being produced.

The description of the operation is displayed.

The user scans, enters, or searches for a batch number that is assigned to the material specified.

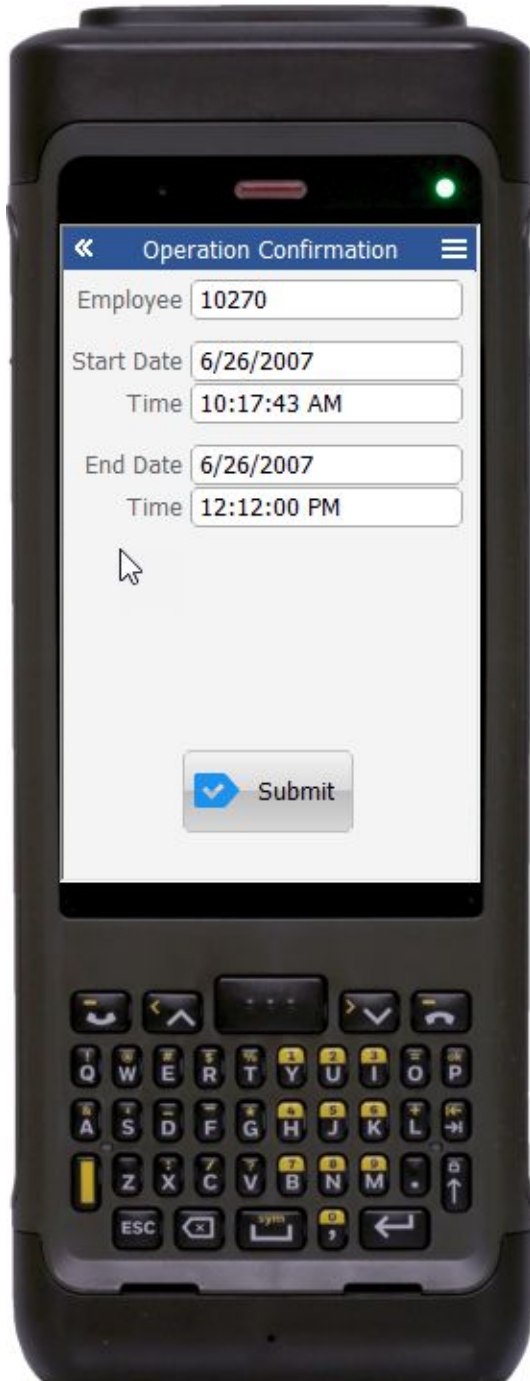
The user enters the expiration date of the material created at this operation if necessary.

If entering serial numbers, the Serial field will continue to have focus until the user taps the **No More Serials** button.



A counter will track the number of serial numbers entered.

The user enters the yield for this operation. The value defaults to the expected quantity.



The user can enter any scrap quantity if any is produced but the default is zero.

The user can enter any rework quantity if any is produced but the default is zero.

If there is scrap or rework, the Reason field is displayed.

After the last visible field is entered the user is taken to page 2.

The arrow in the upper left corner will take the user back to the menu.

#### Description of Workflow (Page 2 of 2)

The user enters their SAP employee ID.

The user enters the Start Date and Time of the operation.

The user enters the End Date and time of the operation.

Tapping the **Submit** button will post the quantity results of this operation to SAP and reset the application.

The double arrows in the upper left corner will take the user back to page 1.



## Technical Information

This lists the tables used for validations, searches and defaults by prompt.

<b>Prompt</b>	<b>Table</b>
Plant	T001W
Prod Ord	AFPO / BAPI_MATERIAL_GET_DETAIL / BAPI_MATERIAL_GETLIST
Oper	AFVC / MARA / MARC / BAPI_PRODORDCONF_GET_TT_PROP
Batch	NA
ExpDate	NA
Serial	SER05 / OBJK / EQUI / JEST
Yield	NA
Scrap	NA
Rework	NA
Reason	TRUGT
Employee	BAPI_EMPLOYEE_GETDATA
Start Date	NA
Time	NA
End Date	NA
Time	NA
App Update	BAPI_PRODORDCONF_CREATE_TT / AFRU / BAPI_TRANSACTION_COMMIT / BAPI_GOODSMVT_CREATE

