

# SAP

## PRODUCTION ORDER – ISSUE TO PRODUCTION ORDER

---

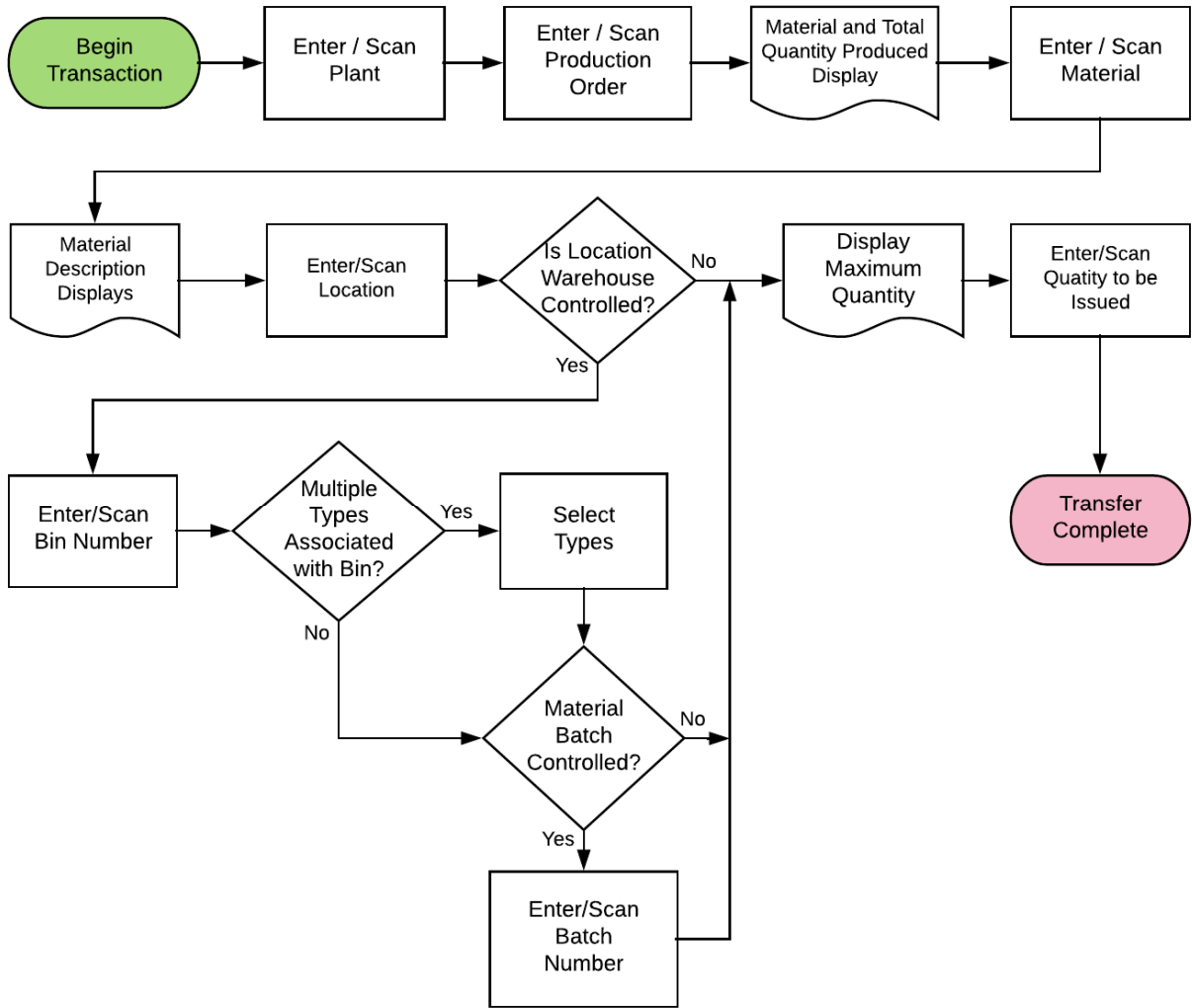
This application takes material out of inventory and issues it to a production order.

RFgen Functional Documentation  
2019

RFgen provides its customers SAP-validated, ready-to-use suites of “Open Source” applications and a development environment that can be used to create new apps or to modify existing apps.

This document describes the business workflow and technical information used in this application.

## SAP: Production Order (PR) – Issue to Production Order



## FPRCW0200 PR – Issue to Production Order

This application takes material out of inventory and issues it to a production order.



### Description of Workflow

First the user scans, enters, or searches for a plant value if one does not default from the user profile.

The user then scans, enters, or searches for a released but not finalized production order.

The material and the total quantity of the material being produced is displayed.

The user then scans, enters, or searches for a material. Searching for a material will display the materials that belong to the production order. The material's description will be displayed.

If the material is Batch-controlled, the Batch field will be visible.

The user scans, enters, or searches for a location where the material exists.

If the location is a warehouse-controlled location the Bin and Type fields will appear.

The user scans, enters, or searches for a Bin number that is assigned to the material specified.

If there is more than one Type associated with that bin, the user will be prompted to pick one from a list.



The user scans, enters, or searches for a batch number that is assigned to the material specified. The maximum quantity available of the material is shown.  
The user enters the quantity they wish to issue.

The **Submit** button will post the issue of this material to SAP and reset the application.

The arrow in the upper left corner will take the user back to the menu.

## Technical Information

This lists the tables used for validations, searches and defaults by prompt if applicable.

Prompt	Table
Plant	T001W
Prod Ord	AFPO
Mat	BAPI_MATERIAL_GET_DETAIL / BAPI_MATERIAL_GETLIST / RESB / MARA / MARC
Locn	BAPI_MATERIAL_GETLIST / T320 / T001L / T159L / T156
Bin	LAGP / LQUA
Type	LAGP
Batch	MCHB / LQUA
Qty	MARD / MCHB / MSPR / MSKA / LQUA
App Update	BAPI_GOODSMVT_CREATE

