

SAP PRODUCTION ORDER – COMPONENT SCRAP

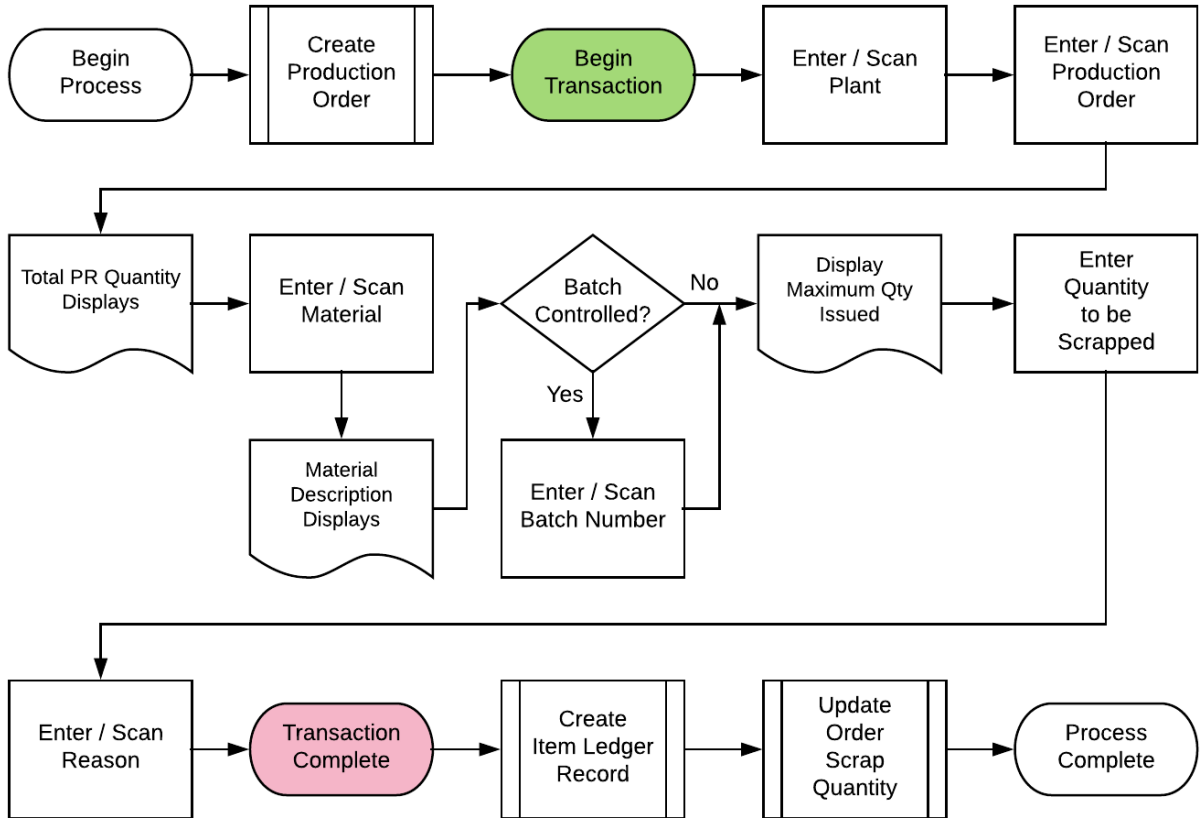
This application withdraws a component from use in a production order (PR) and writes it off as scrap.

RFgen Functional Documentation
2019

RFgen provides its customers SAP-validated, ready-to-use suites of “Open Source” applications and a development environment that can be used to create new apps or to modify existing apps.

This document describes the business workflow and technical information used in this application.

SAP: Production Order (PR) – Component Scrap



FPRCS0200 – Component Scrap

This application withdraws a component from use in a production order and writes it off as scrap.



Description of Workflow

First the user scans, enters, or searches for a plant value if one is not defaulted from the user's profile.

The user then scans, enters, or searches for a released but not finalized production order.

The total quantity of the material being produced displays.

The user then scans, enters, or searches for a material.

A search option listing the materials associated to the order displays.

The material's description displays.

If the material is Batch-controlled, the Batch field will be visible.

The user scans, enters, or searches for a batch number that is assigned to the material specified.

The maximum quantity of the material issued to the order displays.

The user enters the quantity to be scrapped.



The user scans, enters, or searches for a reason code describing the purpose for scrapping the material.

Tapping the **Submit** button will post the scrap of this material to SAP and reset the application.

The arrow in the upper left corner will take the user back to the menu.

Technical Information

This lists the tables used for validations, searches and defaults by prompt if applicable.

Prompt	Table
Plant	T001W
Prod Order	AFPO
Mat	RESB / BAPI_MATERIAL_GET_DETAIL / BAPI_MATERIAL_GETLIST
Batch	Must be on the order
Qty	
Reason	T157E
App Update	BAPI_GOODSMVT_CREATE / BAPI_TRANSACTION_COMMIT

