

SAP PURCHASE ORDER – RECEIPT BY LINE

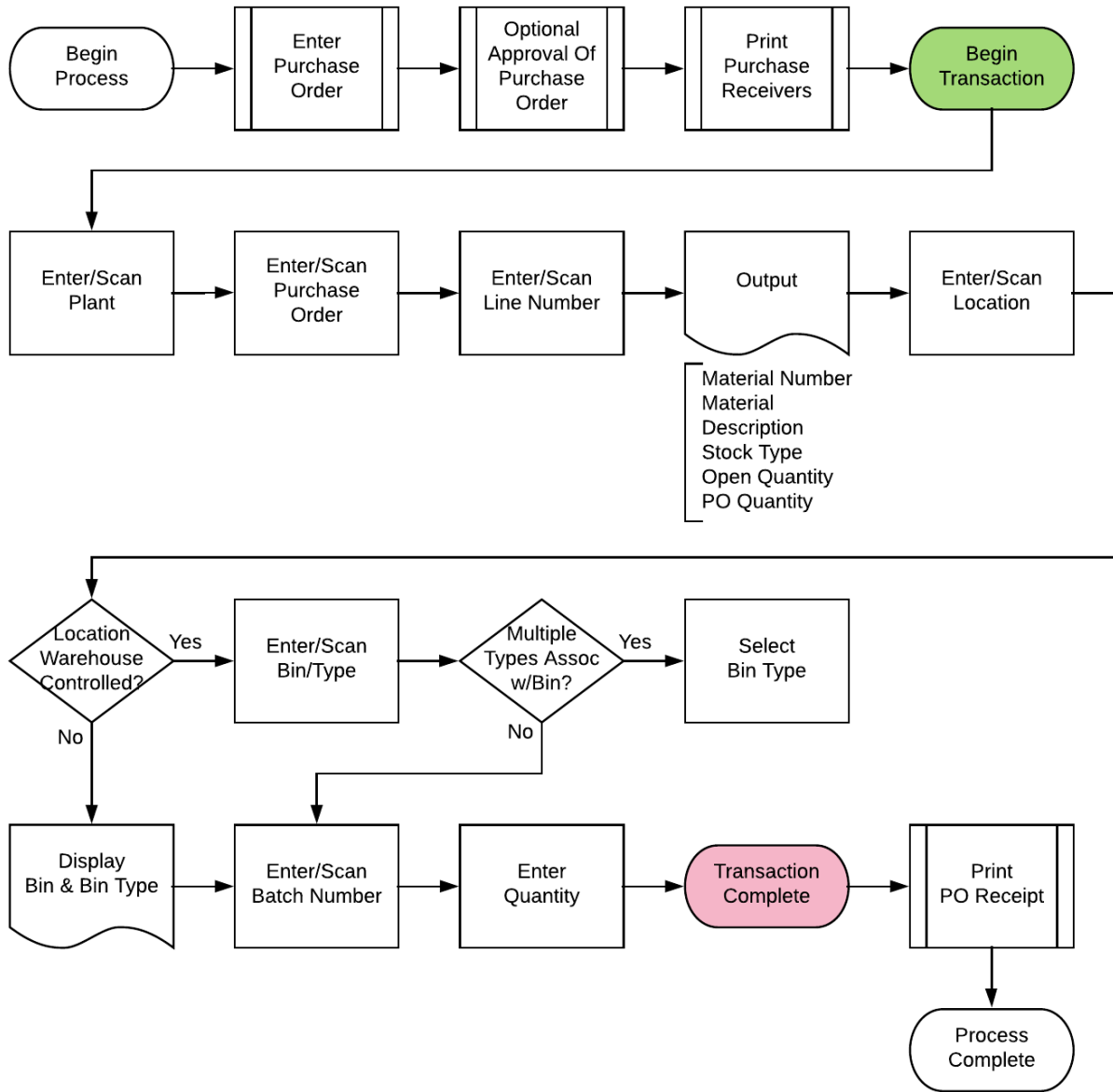
This application helps you receive purchase orders using the line item of the purchase Order (PO).

RFgen Functional Documentation
2019

RFgen provides its customers SAP-validated, ready-to-use suites of Open Source applications and a development environment that can be used to create new apps or to modify existing apps.

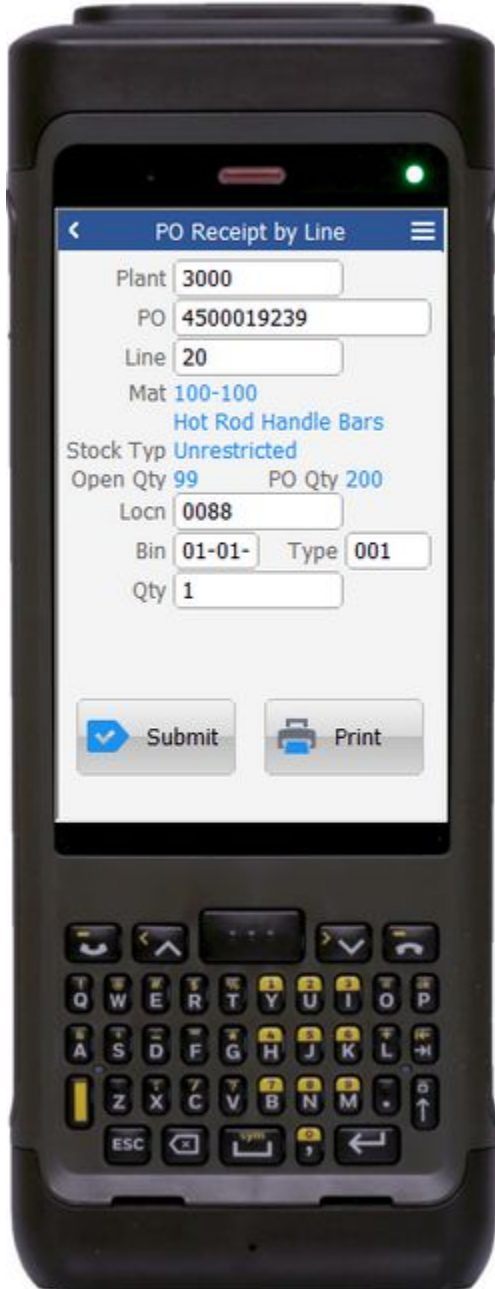
This document describes the business workflow and technical information used in this application.

SAP: Purchase Order (PO) – Receipt by Line Workflow



FPOLR0200 PO – Receipt by Line

This application helps you receive purchase orders using the line item of the PO.



Description of Workflow

First the user will scan, enter, or search for a plant value.

The user will scan, enter, or search for an open purchase order.

The user will scan, enter, or search for a line number on the PO to receive.

Based on the line number, the material number, material description, stock type of the material, the PO line quantity, and the remaining quantity to receive will display.

The user scans, enters, or searches for a location where the material will be placed. This can be defaulted to a Dock location or the final put away location if desired.

If the location is a warehouse-controlled location the Bin and Type fields will appear.

The user scans, enters, or searches for a Bin number that will be used to hold the material.

If there is more than one Type associated with that bin, the user will be prompted to pick one from a list.

The user scans, enters, or searches for a batch number that is assigned to the material specified.



The user enters the quantity they are receiving.

Tapping the **Print** button, the application can be made to work with the customer's printing environment to produce a label for the material.

Tapping on the **Submit** button will post the receipt of this line to SAP and reset the form back to the Line field.

The arrow in the upper left corner will take the user back to the menu.

Technical Information

This lists the tables used for validations, searches and defaults by prompt if applicable.

Prompt	Table
Plant	T001W
PO	BAPI_PO_GETITEMS
Line	BAPI_PO_GETDETAIL / BAPI_MATERIAL_GET_DETAIL / BAPI_MATERIAL_GETLIST / MARA / MARC
Locn	BAPI_MATERIAL_GETLIST / T320 / T001L / T159L / T156
Bin	LAGP / MARD
Type	LAGP
Batch	MCHB / LQUA
Qty	NA
App Update	BAPI_GOODSMVT_CREATE

Customization Considerations

If you are planning on creating a new version of this application or modifying it for a customer, consider asking these questions to help prepare your list of customization requirements.

1. Do you want to allow an over-receipt?
2. What printing program do you have if any?
3. Do you want to default the location based on Stock type?

