

SAP

PLANT MAINTENANCE – NOTIFICATION INQUIRY

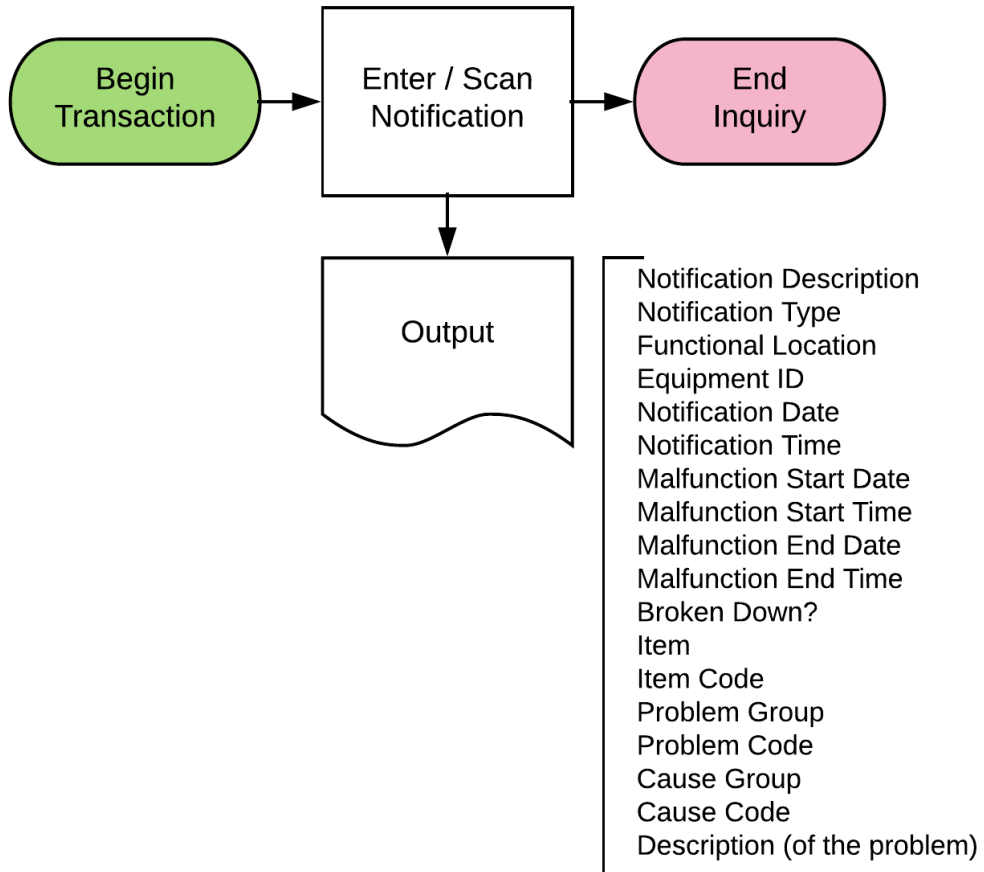
This application helps you inquire and view a plant maintenance notification, but does not allow you to edit the notification.

RFgen Functional Documentation
2019

RFgen provides its customers SAP-validated, ready-to-use suites of Open Source applications and a development environment that can be used to create new apps or to modify existing apps.

This document describes the business workflow and technical information used in this application.

SAP: PM – Notification Inquiry Workflow



FPMQN0200 PM – Inquiry Notifications

This application displays the Plant Maintenance notification but does not allow edits.



Description of Workflow (Page 1 of 3)

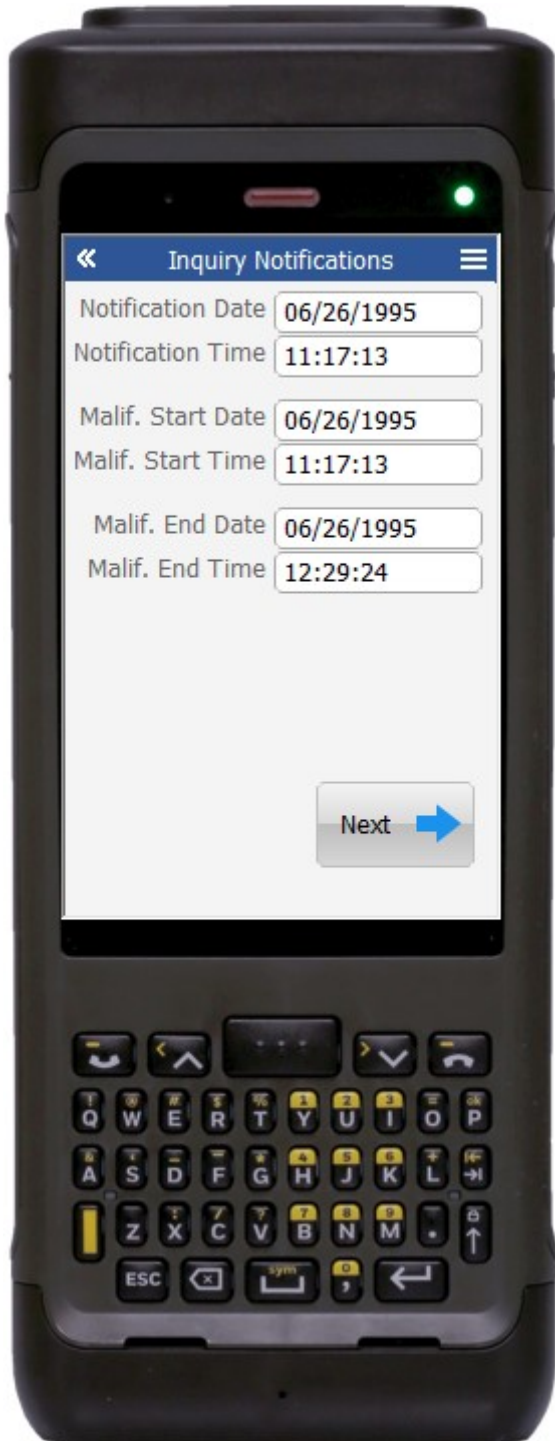
First the user will scan, enter, or search for a notification.

The notification description will be displayed. Additionally, all the fields on all the screens will populate with data.

The user clicks the **Next** button to go to page 2.

The arrow in the upper left corner will take the user back to the menu.





Description of Workflow (Page 2 of 3)

The second page contains optional values for when the notification was created, when the malfunction started, and when the malfunction was corrected.

After moving through all the fields, the user is taken to page 3, or, the user can display page 3 by tapping the **Next** button.

The double arrows in the upper left corner will take the user back to page 1.

Description of Workflow (Page 3 of 3)



On the third page, the user can toggle the Broken-Down check box to indicate that the asset is currently not functional.

The user can use the **Last** and **Next** arrow buttons to page through the existing components attached to the notification.

The user taps the **Submit** button to post the modified notification to SAP.

The double arrows in the upper left corner will take the user back to page 2.

Technical Information

Validations

This lists the Tables and Fields (Columns) accessed by each prompt.

Prompt	Table /	Description
Notification	QMEL / BAPI_ALM_NOTIF_GET_DETAIL	NA

