

# SAP

## PLANT MAINTENANCE – MODIFY NOTIFICATION

---

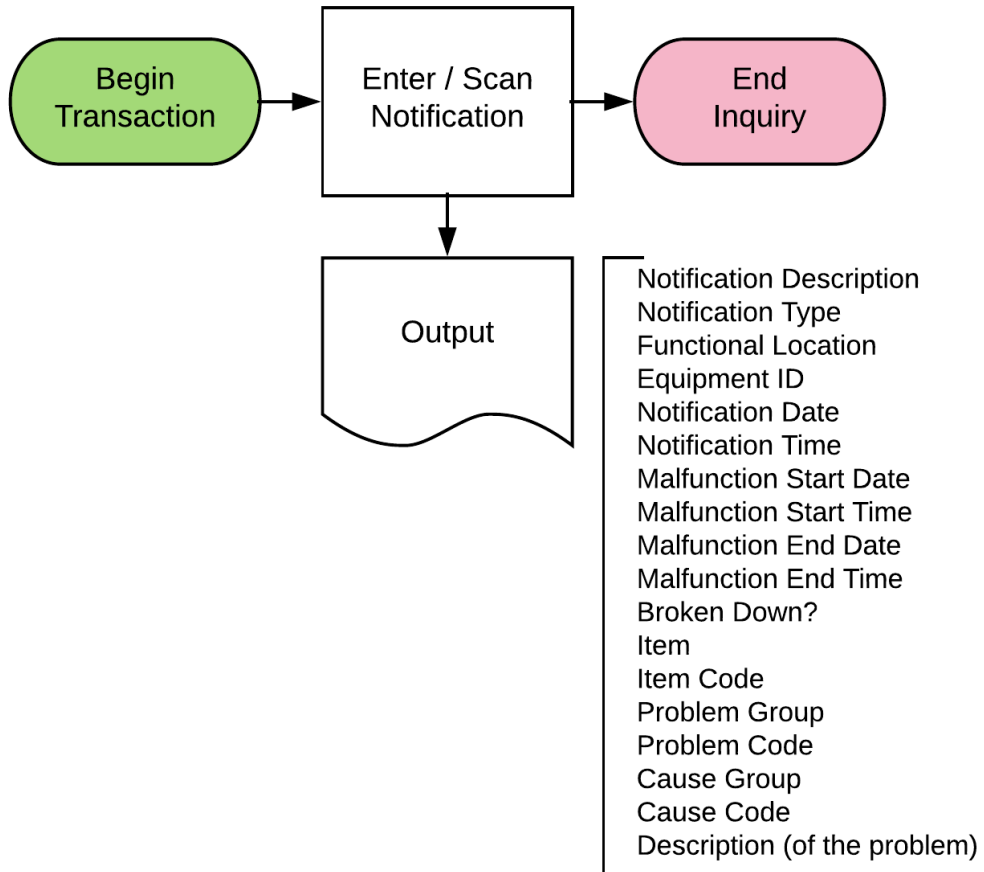
This application allows the user to modify an existing Plant Maintenance notification. It contains all the same fields as the application that lets a user create a notification.

RFgen Functional Documentation  
2019

RFgen provides its customers SAP-validated, ready-to-use suites of Open Source applications and a development environment that can be used to create new apps or to modify existing apps.

This document describes the business workflow and technical information used in this application.

## SAP: PM – Modify Notifications Workflow



## FPMMN0200 PM – Modify Notifications

This application allows the user to modify an existing Plant Maintenance notification. It contains all the same fields as the application that lets a user create a notification.



### Description of Workflow (Page 1 of 3)

First the user will scan, enter, or search for a notification.

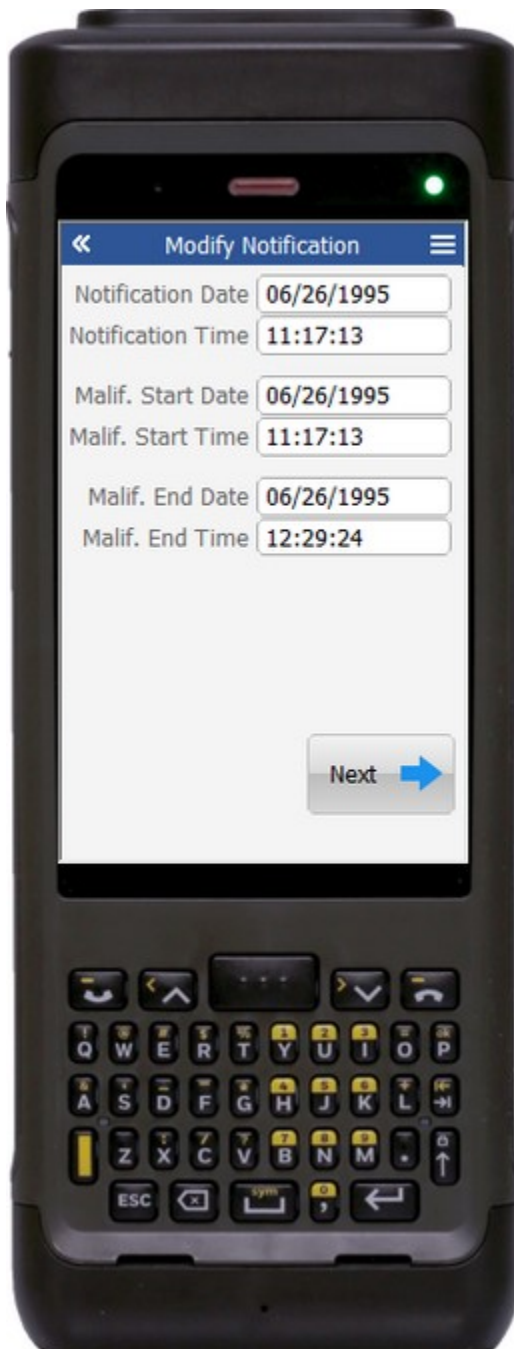
The notification type and functional location are not editable as SAP does not allow changes.

The user may optionally scan, enter, or search for an Equipment number.

After validation, the **Next** button is displayed, allowing the user to move to page 2.

The arrow in the upper left corner will take the user back to the menu.

## Description of Workflow (Page 2 of 3)

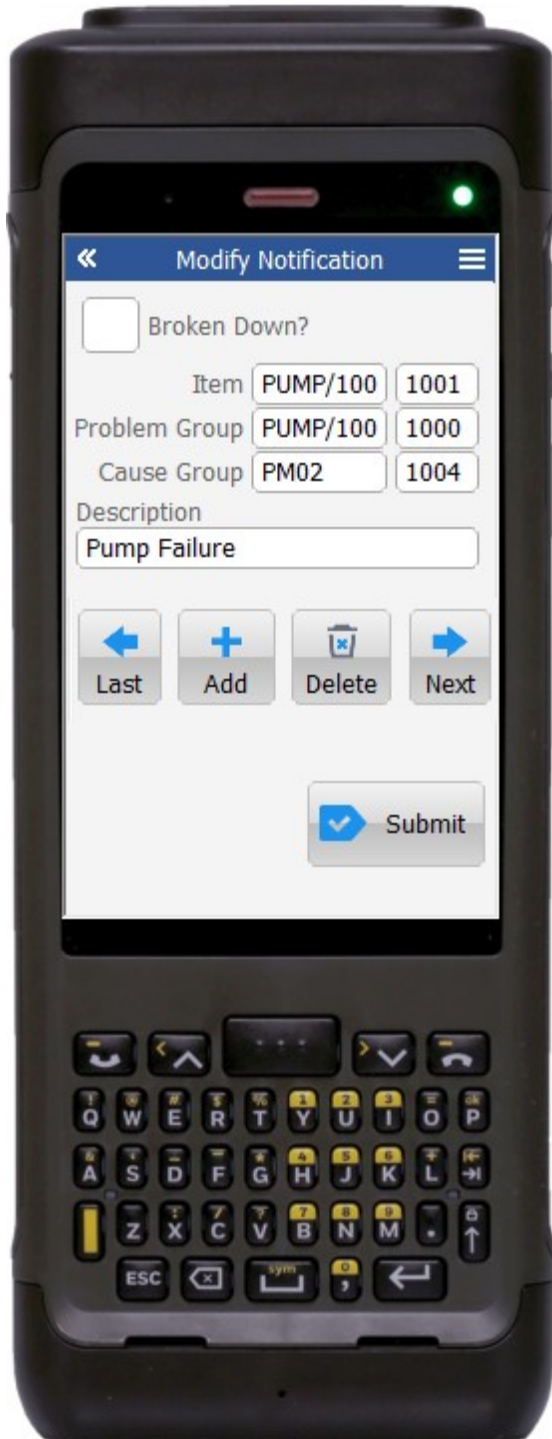


The second page contains optional values for when the notification was created, when the malfunction started, and when the malfunction was corrected.

After moving through all the fields, the user is taken to page 3, or, the user can display page 3 by tapping the **Next** button.

The double arrows in the upper left corner will take the user back to page 1.

## Description of Workflow (Page 3 of 3)



On the third page, the user can toggle the Broken-Down check box to indicate that the asset is currently not functional.

The user can use the **Last** and **Next** arrow buttons to page through the existing components attached to the notification.

To make changes, the user may add additional components by tapping the **Add** button.

Delete components by tapping the **Delete** button, or, modifying the details of a component by editing the text in any of the fields.

The user taps the **Submit** button to post the modified notification to SAP.

The application will reset the fields and take the user back to page 1.

The double arrows in the upper left corner will take the user back to page 2.



## Technical Information

### Validations

This lists the Tables and Fields (Columns) accessed by each prompt.

Prompt	Table /	Description
Notification	QMEL / BAPI_ALM_NOTIF_GET_DETAIL	NA
Notification Type	TQ80_T	
Func Loc	IFLS_VIEW	
Equipment	EQUI / EQUI_ADDR	
Notification Date	Valid date	
Notification Time	Valid time	
Malif. Start Date	Valid date	
Malif Start Time	Valid time	
Malif End Date	Valid date	
Malif End Time	Valid time	
Broken Down	NA	
Item Group	QPGR / QPGT	
Item Code	QPCD / QPCT	
Problem Group	QPGR / QPGT	
Problem Code	QPCD / QPCT	
Cause Group	QPGR / QPGT	
Cause Code	QPCD / QPCT	
Short Desc		
App Update	BAPI_ALM_NOTIF_DATA_MODIFY / BAPI_ALM_NOTIF_DATA_DELETE / BAPI_ALM_NOTIF_GET_DETAIL / BAPI_ALM_NOTIF_SAVE	

