

SAP

PLANT MAINTENANCE –

CREATE PLANT MAINTENANCE ORDER

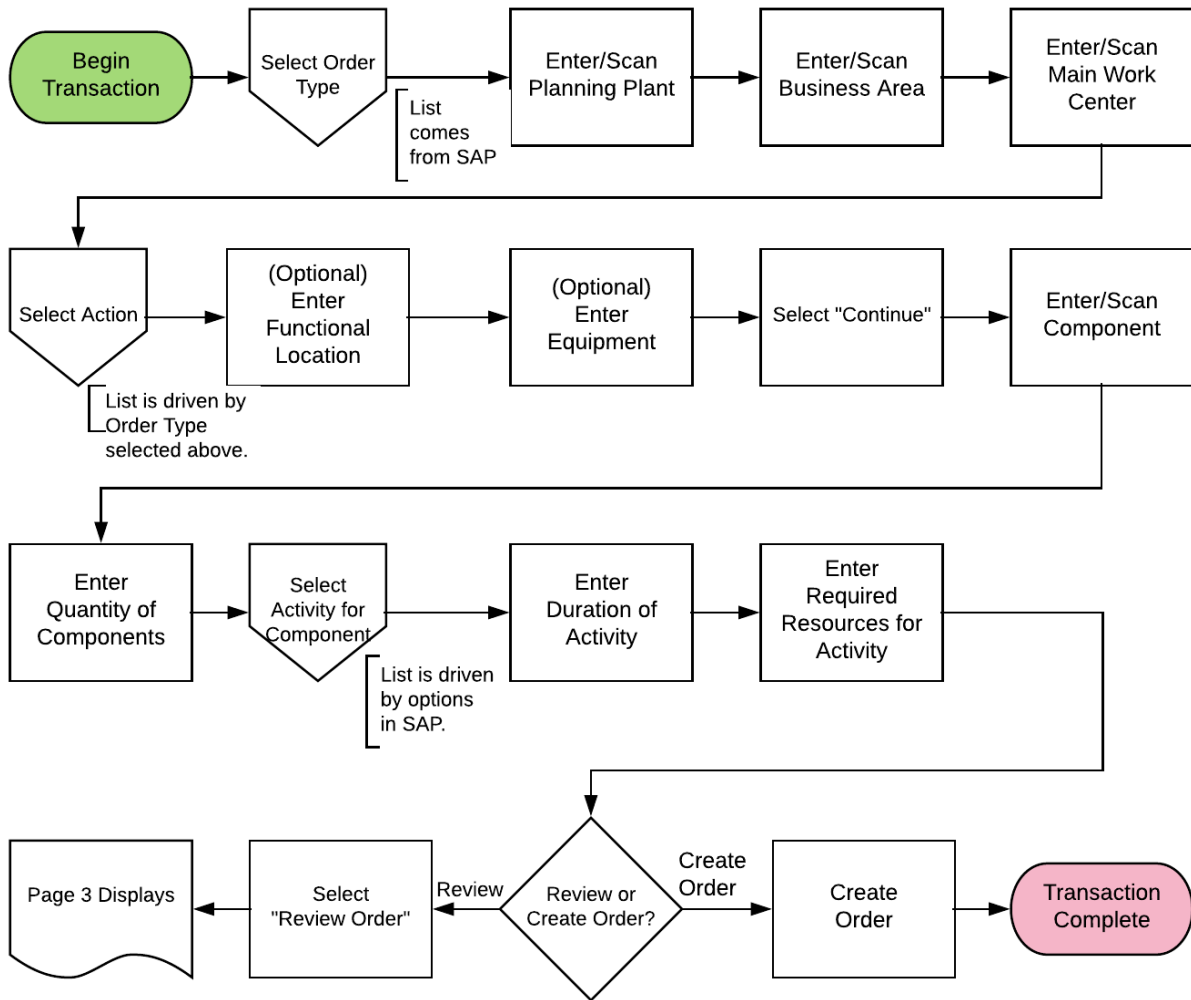
This application will create a plant maintenance order for a piece of equipment or functional location that requires attention.

RFgen Functional Documentation
2019

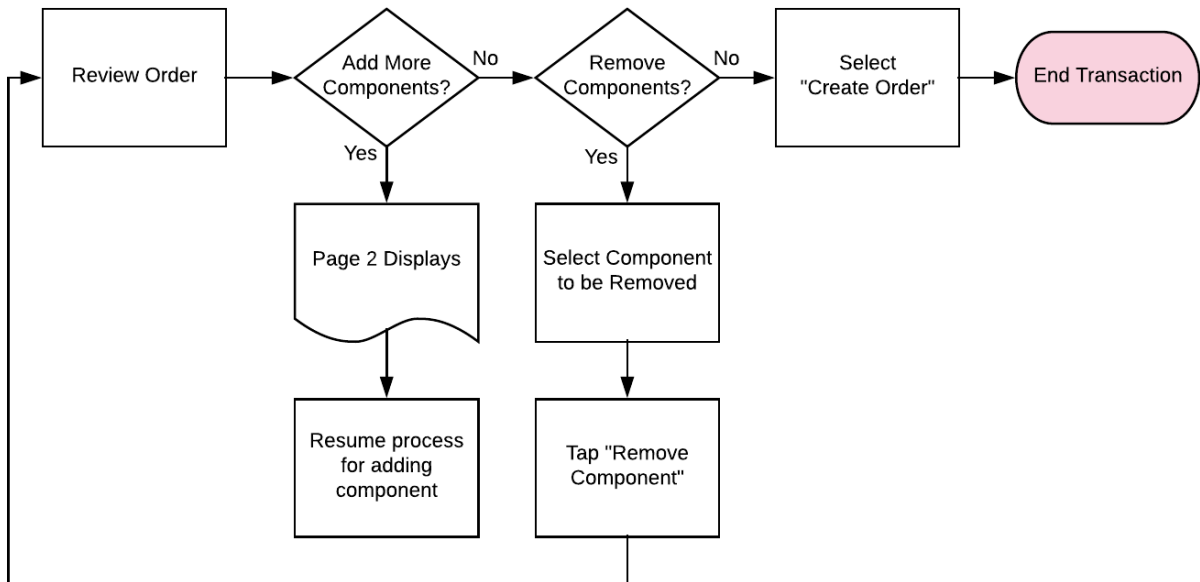
RFgen provides its customers SAP-validated, ready-to-use suites of Open Source applications and a development environment that can be used to create new apps or to modify existing apps.

This document describes the business workflow and technical information used in this application.

SAP: PM – Create Plant Maintenance Order Workflow



SAP: PM – Create Plant Maintenance Order Workflow (Continued)



FPMCO0200 PM – Create Plant Maintenance Order

This application will create a plant maintenance notification for a piece of equipment or functional location that requires attention.



Description of Workflow (Page 1 of 3)

First the user will select the type of order being created. This is a drop-down field of possible values that comes from the SAP system.

The user scans, enters, or searches for the Planning Plant.

The user scans, enters, or searches for the Business Area.

The user scans, enters, or searches for the Main Work Center.

Based on the Order Type selected the Action drop-down list is populated.

The user selects a value from the Action list. This is the type of action to take for the asset on the order.

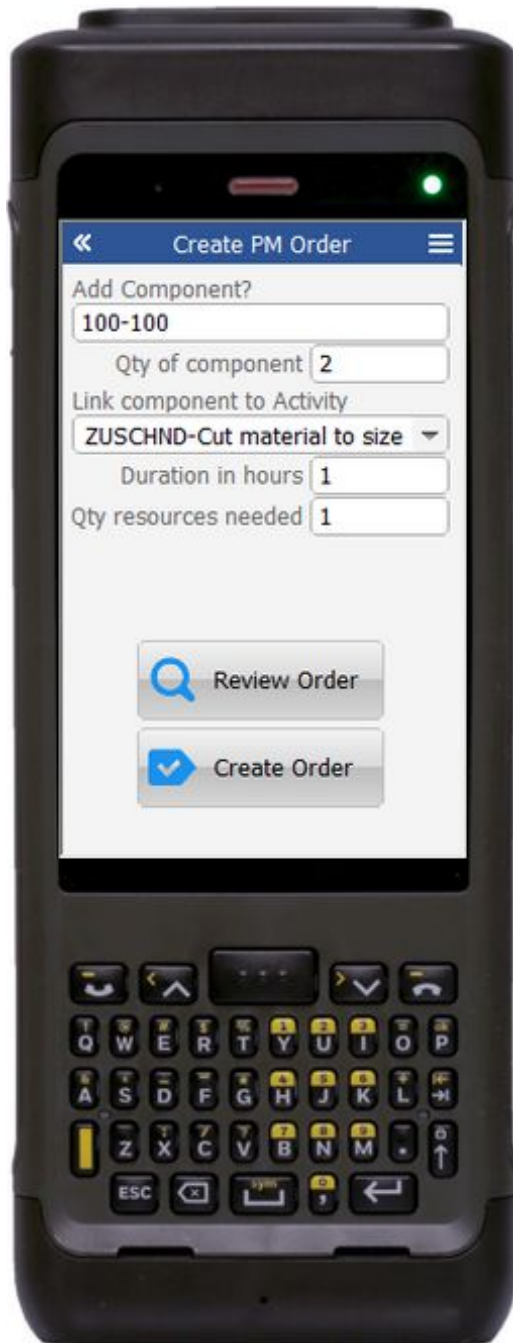
The user may optionally scan, enter, or search for a Functional Location or skip the field and scan, enter, or search for an Equipment number.

After validation, the Continue button is displayed allowing the user to move to page 2.

The arrow in the upper left corner will take the user back to the menu.



Description of Workflow (Page 2 of 3)



This page is used to add parts or components to the order with the expectation that they are needed for the asset.

The user scans, enters, or searches for a component.

The user enters the quantity of that component that are required.

Linking the component to the activity describes how the component will be used. A drop-down list provides the pre-selected options from SAP.

The user estimates how long it will take to use the selected component and how many resources (people) are required.

Tapping the **Review Order** button takes the user to page 3 to review all the components entered.

Tapping the **Create Order** button posts the data to SAP and resets the application.

The double arrows in the upper left corner will take the user back to page 1.

Description of Workflow (Page 3 of 3)



Page 3 is a review of all the components entered on page 2.

The user may tap on the **Add More Components** button which will take them back to page 2.

The user may tap the **Remove Component** button to delete one of the selected components from the order.

Clicking the Create Order button posts the data to SAP

Coand resets the application.

The double arrows in the upper left corner will take the user back to page 2.

Technical Information

This lists the tables used for validations, searches and defaults by prompt.

Note: The three options for the purpose of this notification are: Non-Functional, Barely-Functional, and Routine Checkup and are managed in the SAP Constants section at the top of the application code.

Prompt	Table
Order Type	V_AUART
Plan Plant	T399I
Business Area	TGSB / TGSBT
Main Work Ctr	M_CRAMA
Action	V_JD_T350I
Func Loc	IFLS_VIEW
Equipment	EQUI / EQKT
Add Component	M_MAT1W
Qty of Comp	
Link to Activity	T435T
Duration in hours	NA
Qty Resources	NA
App Update	BAPI_ALM_ORDER_MAINTAIN