

DataMAX Software Group, Inc.
El Dorado Hills, CA
USA

SAP PLANT MAINTENANCE – INQUIRY NOTIFICATION

This application helps you inquire and view a plant maintenance notification but does not allow edits to it.

RFgen Functional Documentation
2019

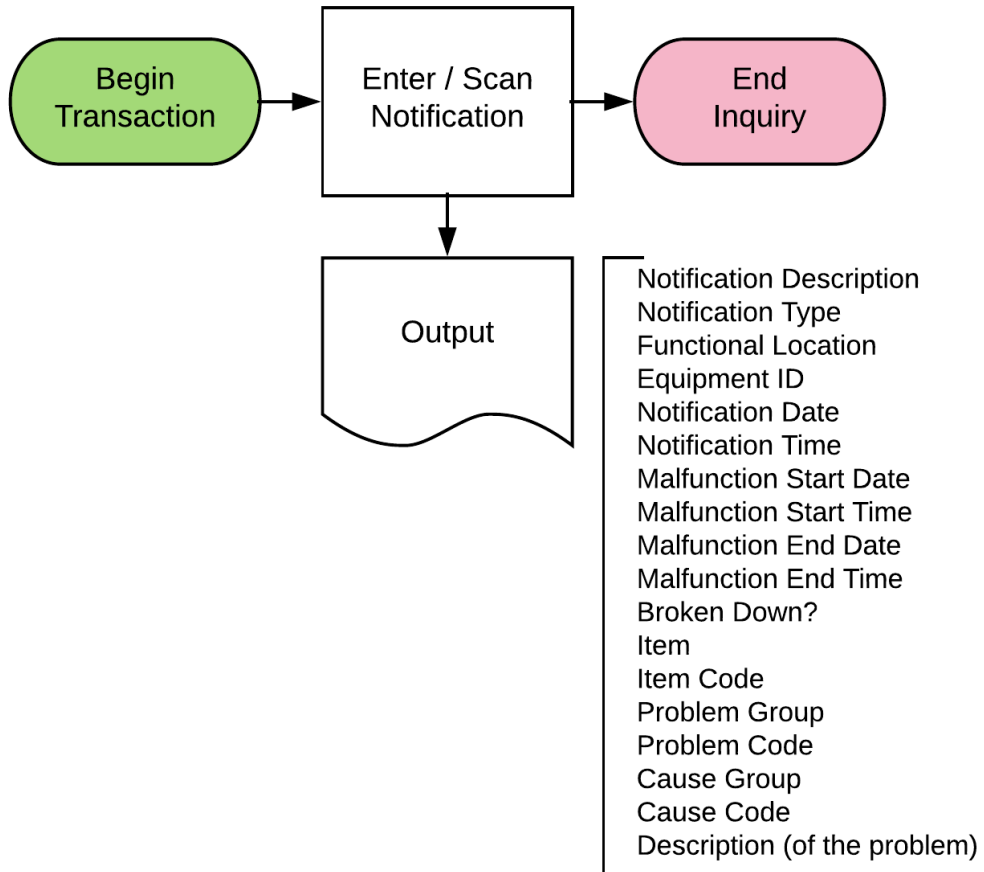
RFgen provides its customers SAP-validated, ready-to-use suites of Open Source applications and a development environment that can be used to create new apps or to modify existing apps.

This document describes the business workflow and technical information used in this application.

SAP[®] Certified
Integration with SAP Applications

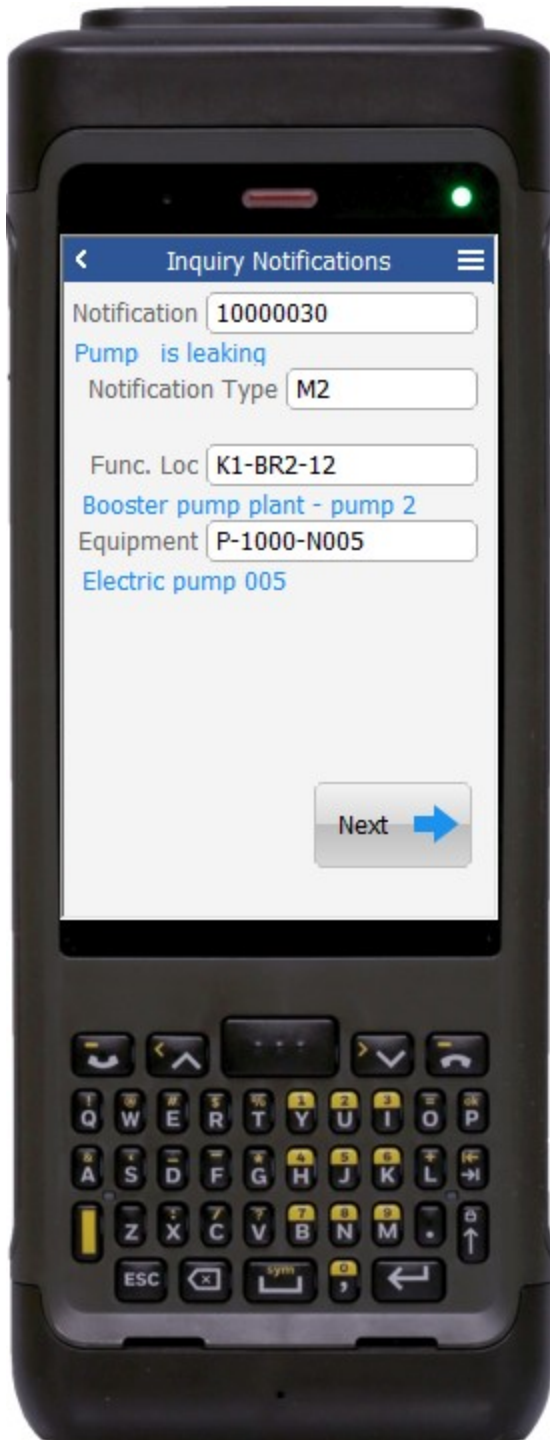
RFgen

SAP: PM – Inquiry Notifications Workflow



FPMQN0200 PM – Inquiry Notifications

This application displays the Plant Maintenance notification but does not allow edits.



Description of Workflow (Page 1 of 3)

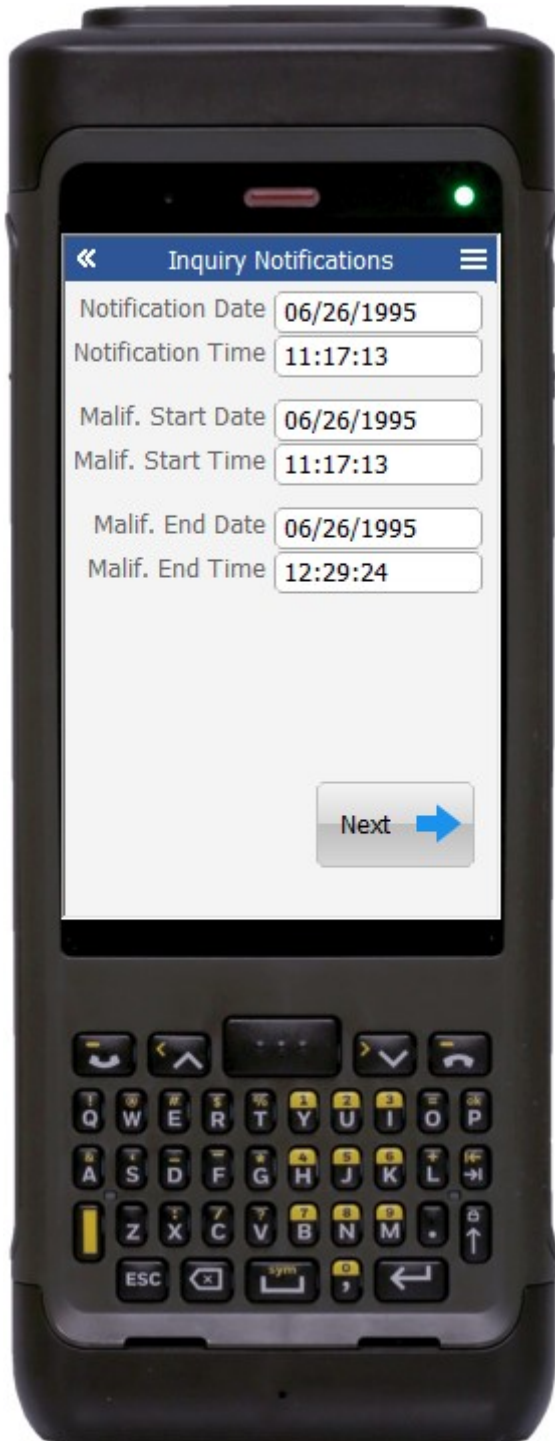
First the user will scan, enter, or search for a notification.

The notification description will be displayed. Additionally, all the fields on all the screens will populate with data.

The user clicks the Next button to go to page 2.

The arrow in the upper left corner will take the user back to the menu.





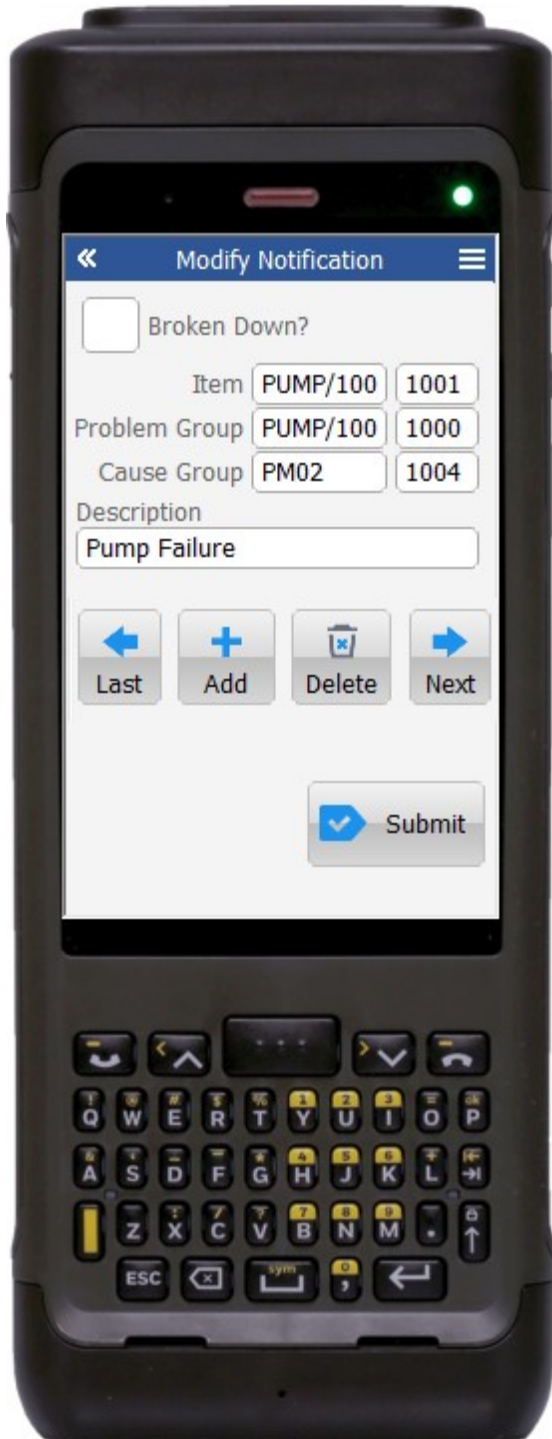
Description of Workflow (Page 2 of 3)

The second page contains optional values for when the notification was created, when the malfunction started, and when the malfunction was corrected.

After moving through all the fields, the user is taken to page 3, or, the user can display page 3 by tapping the **Next** button.

The double arrows in the upper left corner will take the user back to page 1.

Description of Workflow (Page 3 of 3)



On the third page, the user can toggle the Broken-Down check box to indicate that the asset is currently not functional.

The user can use the **Left** and **Right** arrow buttons to page through the existing components attached to the notification.

To make changes, the user may add additional components by tapping the **Add** button.

Delete components by tapping the Delete button, or, modify the details of a component by editing the text in any of the fields.

The user taps the **Submit** button to post the modified notification to SAP.

The application will reset the fields and take the user back to page 1.

The double arrows in the upper left corner will take the user back to page 2.



Technical Information

Validations

This lists the Tables and Fields (Columns) accessed by each prompt.

Prompt	Table /	Description
Notification	QMEL / BAPI_ALM_NOTIF_GET_DETAIL	NA

