

DataMAX Software Group, Inc.  
El Dorado Hills, CA  
USA

# Oracle JD Edwards LICENSE PLATE SALES ST/OT TRANSFER

This application performs a Sales ST/OT (Transfer Sales/Transfer Orders) of License Plate locations between two Branch Plants.

---

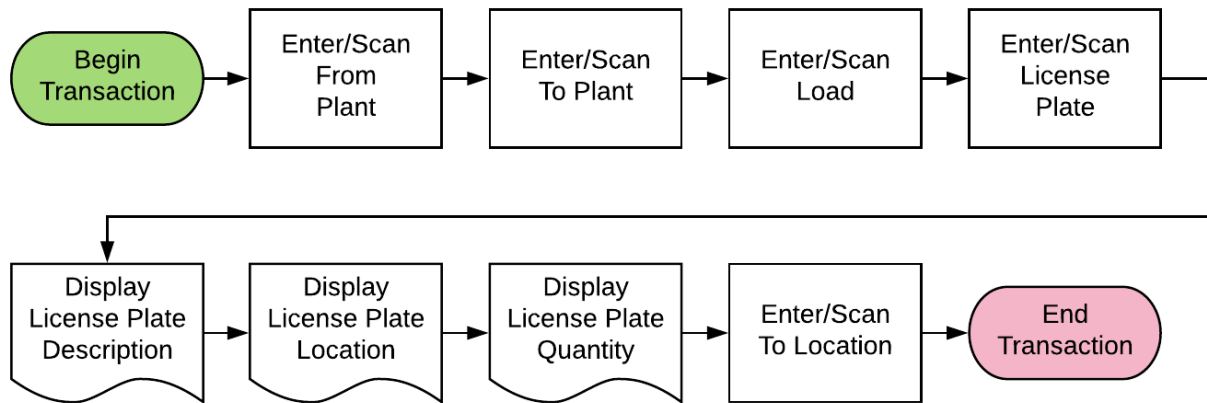
RFgen Functional Documentation  
2019

RFgen provides its customers Oracle-validated, ready-to-use suites of "Open Source" applications and a development environment that can be used to create new apps or to modify existing apps.

This document describes the business workflow and technical information used in this application.

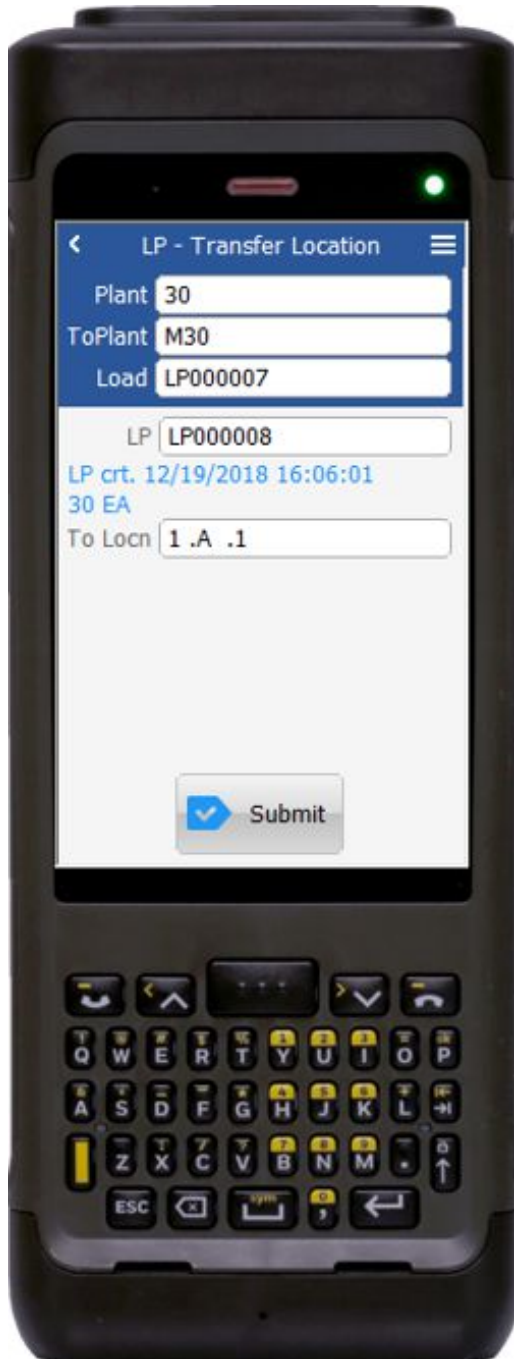


## JD Edwards: License Plate (LP) Sales ST/OT Transfer Workflow



## FLPST0100 License Plate – ST/OT Transfer LP

This application performs a Sales ST/OT (Transfer Sales/Transfer Orders) of License (LP) Plate locations between two branch plants.



### Description of Workflow

First the user scans, enters, or searches for a branch plant if one does not default from the user profile.

Second, the user then scans, enters, or searches for the destination branch plant (To Plant).

The user then scans, enters, or searches the LP load number.

Next, the user scans, enters, or searches the LP (pallet number).

If the pallet is associated with the load, then RFgen retrieves the item quantity from the pallet file.

The LP creation information and the item quantity displays.

Next, the user enters, or searches the To Location by plant.

The user confirms all the entries are correct, and taps the **Submit** button to process a transfer from the current location to the destination location.

The arrow in the upper left corner, when clicked on, will take the user back to the menu.



## Technical Information

The following describes the tables used for validation, search lists, or functions for a given prompt in this application. If applicable, the default property is also included.

Prompt	Validation/Table	Default Property / In-code Defaults
Plant	F41001, F0006, LP002, LP005	RFgen user profile
ToPlant	F41001, F0006, LP002, LP005	
Load	F55101	
LP	F55101, F55102	
To Locn	F41001, F4100, F41021	

Note: This transaction transfers all of the items to the JDE Cardex record with document type 'IT', and updates the LP Master with the new location.

## Customization Considerations

If you are planning on creating a new version of this application or modifying it for a customer, consider asking these questions to help prepare your list of customization requirements.

1. Do you have different items on a pallet?
2. Do you use lot control or serialization for your items
3. Do you use mixed lot?
4. Do you prefer to use ITM, LITM or AITM for item number in RFgen forms?

