

Oracle JD Edwards LICENSE PLATE ATTACH ITEM

License Plating (LP) is a method of managing volumes of inventory throughout your warehouse using pallets or containers identified with a license plate.

Before you can use LP functionality, the proper tables and relationships must be setup.

This application is the fifth step in the setup process. It attaches items to an existing license plate that will be held in the License Plating database in the master tables.

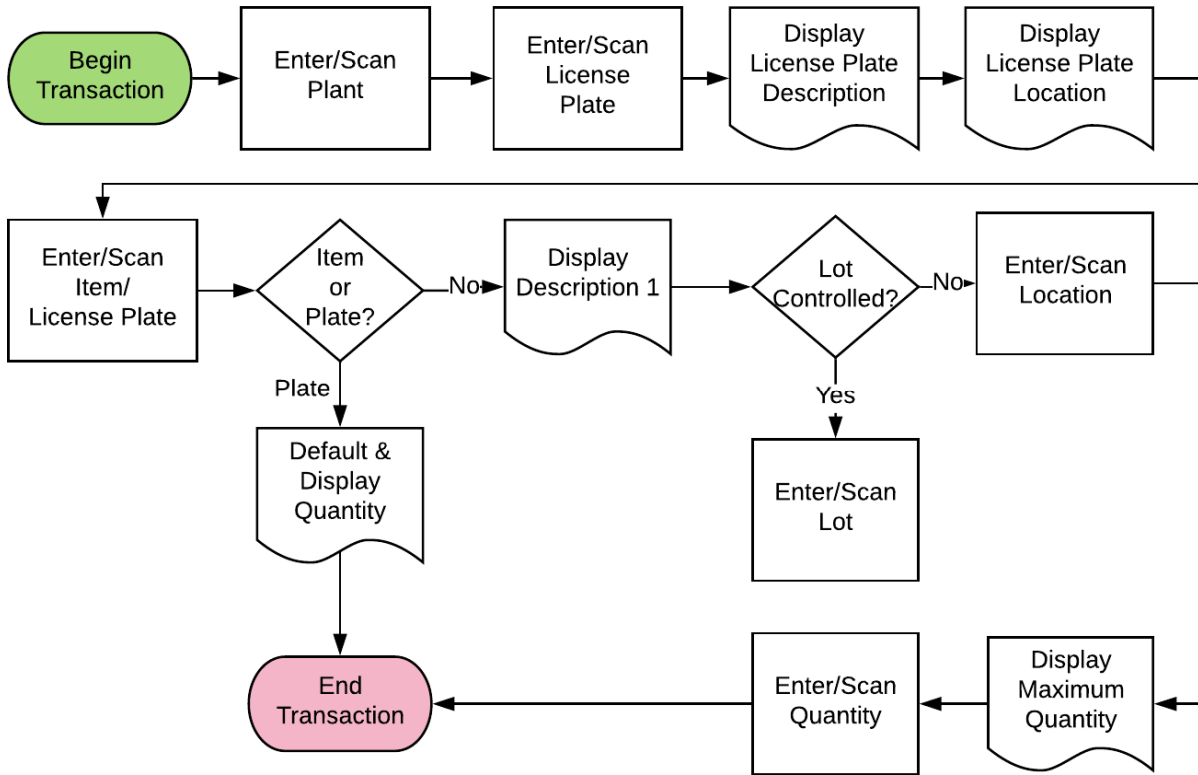
RFgen Functional Documentation

2019

RFgen provides its customers Oracle-validated, ready-to-use suites of Open Source applications and a development environment that can be used to create new apps or to modify existing apps.

This document describes the business workflow and technical information used in this application.

JD Edwards: License Plate (LP) - Attach Item Workflow



Additional Documentation

The license plate setup process requires the following RFgen open source applications.

- Step 1 : FLPCE0100 – Create Entity
- Step 2 : FLPEM0100 – Assign Entity
- Step 3 : FLPCM0100 – Create Type
- Step 4 : FLPCM0100 – Create Plate
- Step 5 : FLPAI0100 – Attach Item



FLPAI0100--LICENSE PLATE ATTACH ITEMS

This application attaches items to an existing license plate that will be held in the License Plating database in the master tables. It creates a transfer of an item from its location to the location that the original license plate resides in if they differ. Besides attaching items to a LP, this application also allows you to build a hierarchy of LPs i.e. you can attach a LP to another LP or you can attach many different LPs to a load.



Description of Workflow

First the user scans, enters, or searches for a plant if one does not default from the user profile.

The user then scans, enters, or searches for the license plate (LP) identification.

The user then scans, enters, or searches the item number.

If the item is already attached to an LP identification, RFgen displays an error message.

If the item is lot-controlled, it requires the user to enter or scan the lot number.

Next, the user scans, enters, or searches a location by plant and item number.

Then, RFgen displays the maximum, quantity available at the location.

Finally, the user scans or enters the quantity.

RFgen displays an error message if the quantity is greater than the maximum quantity.



Lastly, the user confirms all the entries are correct, and taps **Submit** to process the attach item from Item location to LP location.

If the Item location is not the same of LP location, RFgen calls the JDE business functions to transfer the item location to the location that the LP resides in.

The arrow in the upper left corner, when clicked on, will take the user back to the menu.

Technical Information

The following describes the tables used for validation, search lists, or functions for a given prompt in this application. If applicable, the default property is also included.

Prompt	Validation/Table	Default Property / In-code Defaults	Comments
Plant	F41001, F0006, LP002, LP005	CIMCU	RFgen defaults the Plant value from the RFgen User Profile.
LP ID	F55101	LMLPID	RFgen validates the LP ID from LP header table F55101.
Item	F4108, F4101, F4102, F55102	IMLITM	RFgen validates item from item master file, then checks if item already attached to LP ID.
Lot	F4108	IOLOTN	
From Location	F41001, F4100, F41021	LMLOCN	RFgen validates the item location and retrieves item availability quantity from this location.
Max. Qty	F41021	LIPQOH	



Customization Considerations

If you are planning on creating a new version of this application or modifying it for a customer, consider asking these questions to help prepare your list of customization requirements.

1. Do you have different items on a pallet?
2. Do you use lot control or serialization for your items
3. Do you use mixed lot?
4. Do you prefer to use ITM, LITM or AITM for item number in RFgen forms?

