

DataMAX Software Group, Inc.
El Dorado Hills, CA
USA

Oracle JD Edwards LICENSE PLATE CYCLE COUNT BY LOCATION

This application counts license plate inventory for a specified cycle. Cycle Counts are updated with the information entered upon completion of the transaction.

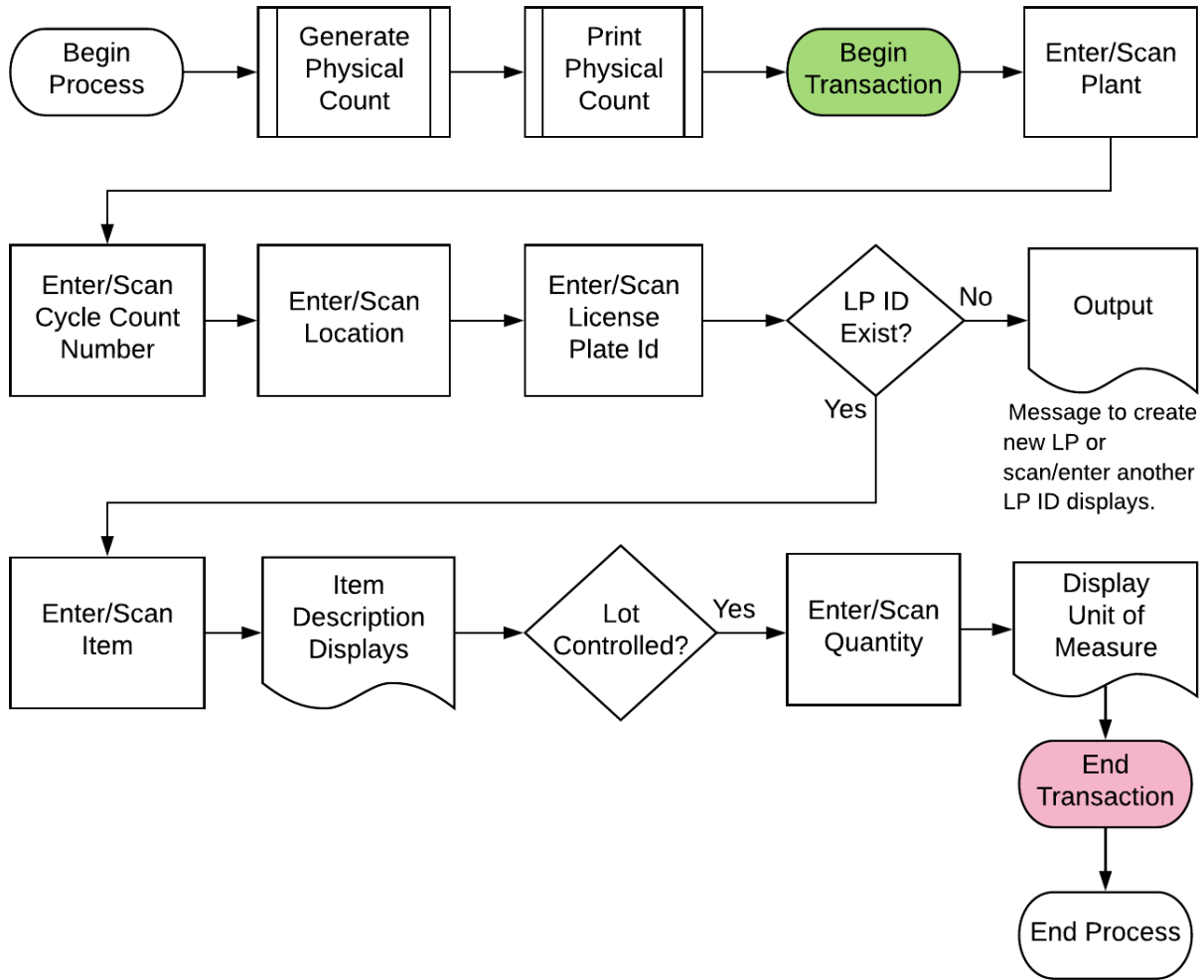
RFgen Functional Documentation
2019

RFgen provides its customers Oracle-validated, ready-to-use suites of "Open Source" applications and a development environment that can be used to create new apps or to modify existing apps.

This document describes the business workflow and technical information used in this application.

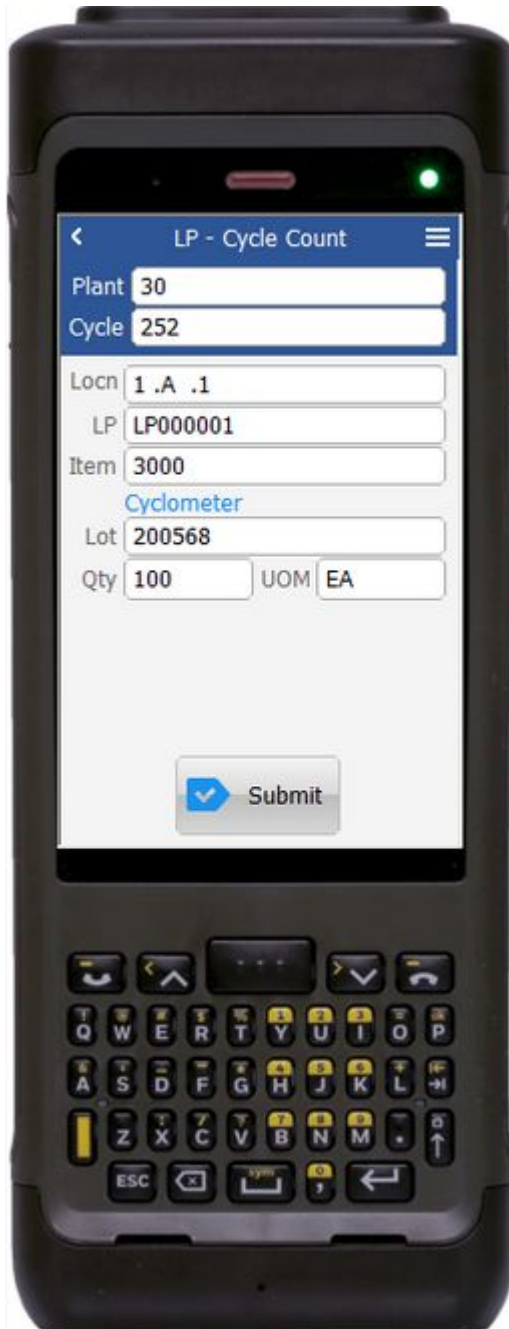


JD Edwards: License Plating (LP) - Cycle Count by Location Workflow



FLPCC0100 – License Plate Cycle Count by Location

This application helps you cycle count by location, the number of items on a pallet. The item counts are tracked by the pallet's license plate and location, and lot if applicable, and recorded against a specified cycle count (cycle counts identifier) plant/branch plant.



Cycle Counts are updated with the information entered upon completion of the transaction.

Description of Workflow

First the user scans, enters, or searches for a plant if one does not default from the user profile.

Then the user scans, enters or searches the cycle count number.

The user scans, enters or searches the item location.

The user scans, enters or searches the LP ID. RFgen validates whether the LP ID exists. If it does not a message to create a new LP or the user can scan, enter or search another LP ID.

The user scans or enters Item number. The Item description displays.

If Item is lot-control, the user must scan, enter or search the Lot number.

Finally, the user scans or enters the quantity. The unit of measure (UOM) default for the item's primary UOM displays.



The user confirms all the entries are correct, and taps the **Submit** button to process the cycle count.

The arrow in the upper left corner, when clicked on, will take the user back to the menu.

Technical Information

The following describes the tables used for validation, search lists, or functions for a given prompt in this application. If applicable, the default property is also included.

Prompt	Validation / Search – Tables / Functions	Default Property / in-code defaults
Plant	F41001, F0006, LP002, LP005	RFgen user profile
Cycle	F4140	
Locn	F41001, F4100, F41021	
LP	F55101, F55102	
Item	F4108, F4101, F4102, F4141, F55102	
Lot	F4108, F4141, F41021	

Customization Considerations

If you are planning on creating a new version of this application or modifying it for a customer, consider asking these questions to help prepare your list of customization requirements.

1. Do you have different items on a pallet?
2. What are the conversion factors for the items on a pallet?
3. Do you use lot control or serialization for your items?
Note that RFgen does not support the JDE "optional Lot".
4. What is the format of the lot number or serial number?
5. Do you use mixed lot? One item can belong to many different lots (different production dates) and be stored together in one location.
6. Do you prefer to use ITM, LITM or AITM for item number in RFgen forms?



7. If yes, what level of authorization is required regarding lot-controlled items?
8. Do you allow transfer of items whose lots are on "On Hold" status?
9. If yes, do you use lot group status (alias: LOTGRP) or are there any scenarios or lot statuses that transfer is allowed?
10. Do you allow transfer of items to a different but existing item branch plant?
11. Do you allow transfer of items to a different branch plant where the item does not exist?
12. Is there any specific locations within the same branch plant whereby transfer is not allowed?
13. Are there any staging locations for inbound, outbound or warehouse?
14. Do you allow negative quantity available and negative quantity on hand?
15. Do you use a default BP, print queue/printer for user?
16. If using barcodes, in what format are the barcode to be scanned? 1D, 2D or 3D?
17. Do the labels need to be printed? What fields and format are needed?
18. Do labels need to be reprinted?

