

Oracle JD Edwards

LICENSE PLATE- CREATE PLATE

License Plating (LP) is a method of managing volumes of inventory throughout your warehouse using pallets or containers identified with a license plate.

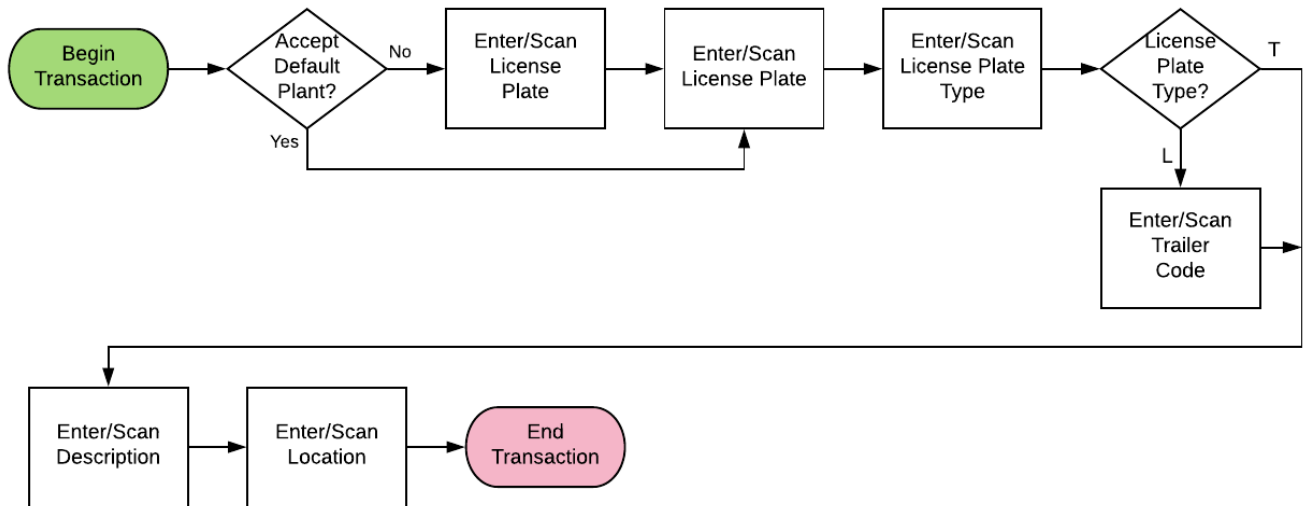
Before you can use LP functionality, the proper tables and relationships must be setup. Creating the plate is the fourth step in the License Plate setup process.

RFgen Functional Documentation
2019

RFgen provides its customers Oracle-validated, ready-to-use suites of Open Source applications and a development environment that can be used to create new apps or to modify existing apps.

This document describes the business workflow and technical information used in this application.

JD Edwards: License Plate (LP) - Create Plate Workflow



Additional Documentation

The license plate setup process requires the following RFgen open source applications.

Step 1 : FLPC0100 – Create Entity

Step 2 : FLPEM0100 – Assign Entity

Step 3 : FLPCM0100 – Create Type

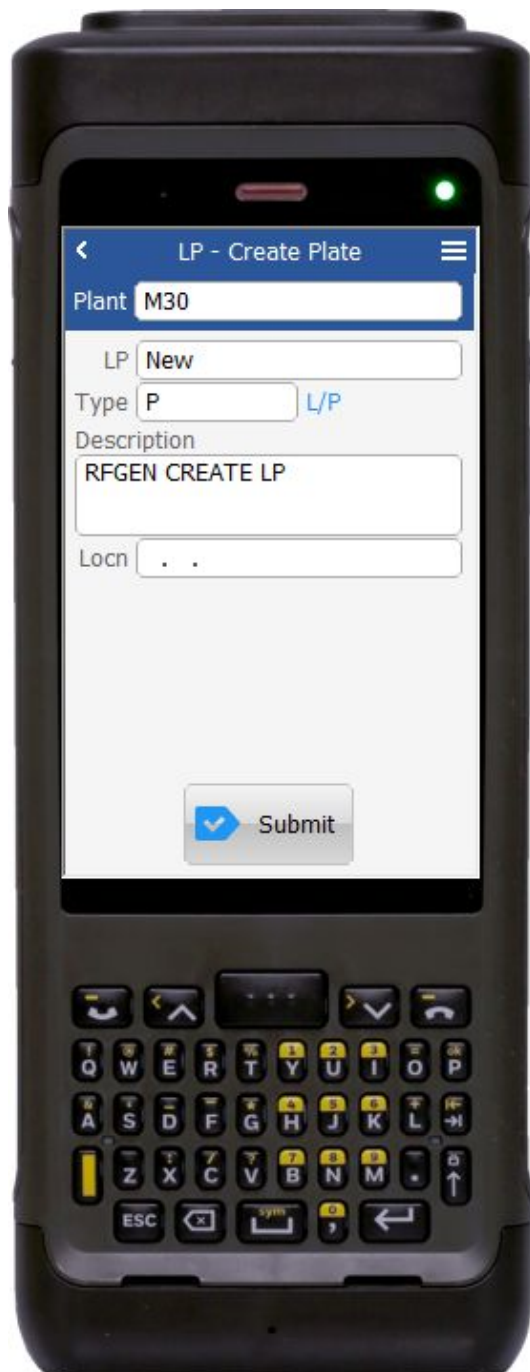
Step 4 : FLPCM0100 – Create Plate

Step 5 : FLPAI0100 – Attach Item



FLPCP0100 – License Plate Create Plate

This application helps you build the “Load” or “Pallet” license plate types. Before you create a license plate, the following administrative tasks should have been performed using these RFgen open source apps listed on page 2.



This setup can be implemented from the RFgen Desktop client or a mobile app.

Description of Workflow

First the user scans, enters, or searches for a plant if one does not default from the user profile.

After the Plant code is entered, the LP field displays “New” and the user is prompted for Type. “New” means RFgen will automatically generate a new LP number.

In the Type field, the user enters either “P” for Pallet, or “L” for Load.

If the user entered P, the user is prompted to enter the pallet description in the Description field.

If the user entered L, a description is displayed automatically in the Description field.

In the Locn field, the user scans, keys in, or searches and selects a Location.

Finally, the user Taps the **Submit** button to accept and create new a license plate. The arrow in the upper left corner will take the user back to the menu.



Technical Information

The following describes the tables used for validation, search lists, or functions for a given prompt in this application. If applicable, the default property is also included.

Prompt	Validation / Search – Tables / Functions	Default Property / in-code defaults
Plant	F41001, F0006, LP002, LP005	RFgen user profile
LP	F55101, F55102, LP002	NA
Type	LP008	NA
Tr Code	LP008	NA
Description	Retrieve from LP008 if Type is “L”.	NA
Locn	F41001, F4100, F41021	NA

