

DataMAX Software Group, Inc.  
El Dorado Hills, CA  
USA

# Deltek Costpoint View Inventory

This application displays details about a part. The output includes location and project information along with lot and serial associations.

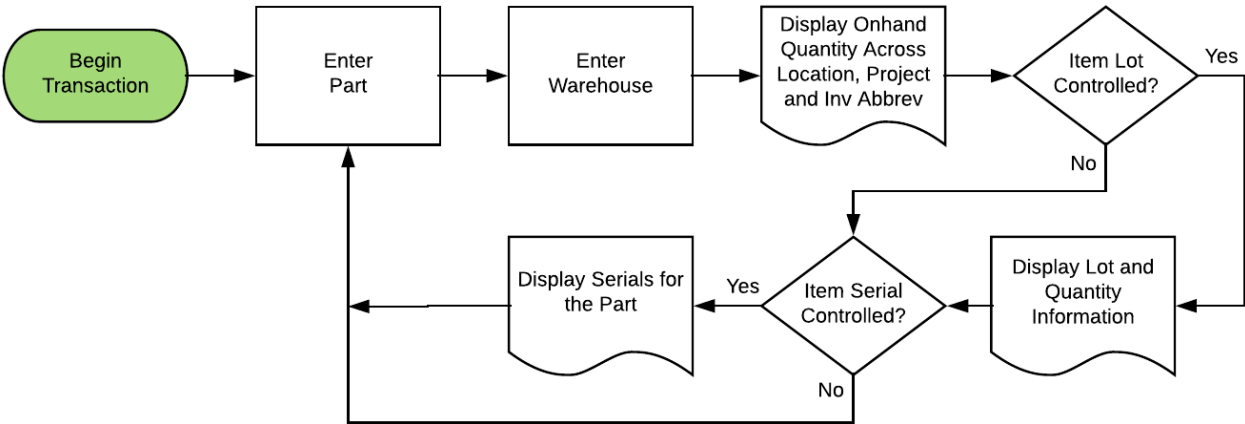


## RFgen Open Source Software Solutions 2019

RFgen provides its customers Costpoint-validated, ready-to-use suites of "Open Source" applications and a development environment that can be used to create new apps or to modify existing apps.

This document describes the business workflow and technical information used in this application.

# Costpoint View Inventory Workflow



## FIMIQ0300 – View Inventory

This application displays details about a part. The output includes location and project information along with lot and serial associations.



### Description of Workflow (1 of 2)

First, the user scans, enters, or searches for a part.

If the part only has one revision value, it will be auto populated, otherwise, the user scans, enters, or searches for the part's revision.

The user scans, searches, or enters a warehouse value if one is not defaulted automatically from the user properties.

After the warehouse is entered the user is taken to page 2.

The arrow in the upper left corner will take the user back to the menu.



## Description of Workflow (2 of 2)

On the second page, a panel list shows the results sorted by location and then project. Included in the output is the Location, Project, Abbreviation, and Location Quantity.

If the part is not lot-controlled or serial - controlled, the button at the bottom will show **New Search**. When tapped, the application will reset, and the user can enter a new part.

If the part is lot-controlled, the button at the bottom will show lots. When tapped, the user is taken to another page and shown a list of lot numbers associated to the part.

At the bottom of that page, a button shows either **New Search** or **Serials** if the part is also serial-controlled.

If the part is serial-controlled, the button at the bottom will show **Serials**.

When **Serials** is tapped, the user will be taken to another page and shown a list of serial numbers associated to the part.

At the bottom of that page a button will show either **New Search** or **Lots** if the part is also lot-controlled.

The double arrows in the upper left corner will take the user back to page 1.



## Technical Information

The following describes the tables used for validation, search lists, or functions for a given prompt in this application. If applicable, the default property is also included.

<b>Prompt</b>	<b>Validation / Search – Tables / Web Method</b>	<b>Default Property</b>
Part	PART / ITEM	
Rev	PART / ITEM	
Whse	WHSE	User Property "WarehouseId"
App Lookup	INVT_WHSE_LOC / INVT_WHS_LOC_SR_LT	

