

DataMAX Software Group, Inc.
El Dorado Hills, CA
USA

Deltek Costpoint - Inventory Location Transfer

This application transfers parts between locations without changing the assigned project.



RFgen Functional Documentation 2019

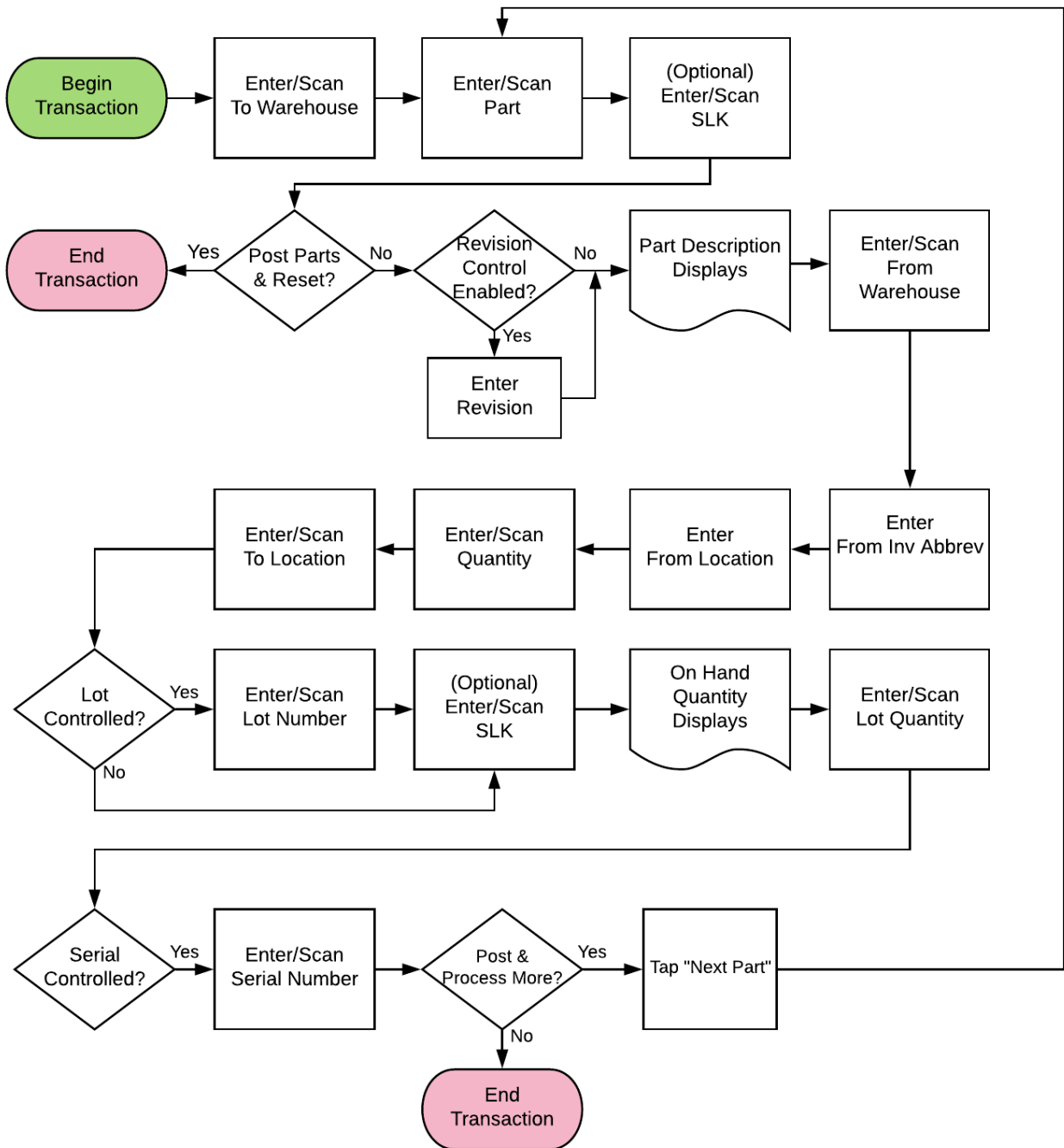
RFgen provides its customers Costpoint-validated, ready-to-use suites of "Open Source" applications and a development environment that can be used to create new apps or to modify existing apps.

This document describes the business workflow and technical information used in this application.

Deltek. | Marketplace
Partner

RFgen.

Costpoint: Inventory Location Transfer Workflow



FIMLT0300 Inventory – Location Transfer

This application transfers parts between locations without changing the assigned project.



Description of Workflow (1 of 2)

First the user scans, enters, or searches for a destination warehouse if one is not defaulted from the user properties. If a warehouse is defaulted, it can be changed if required.

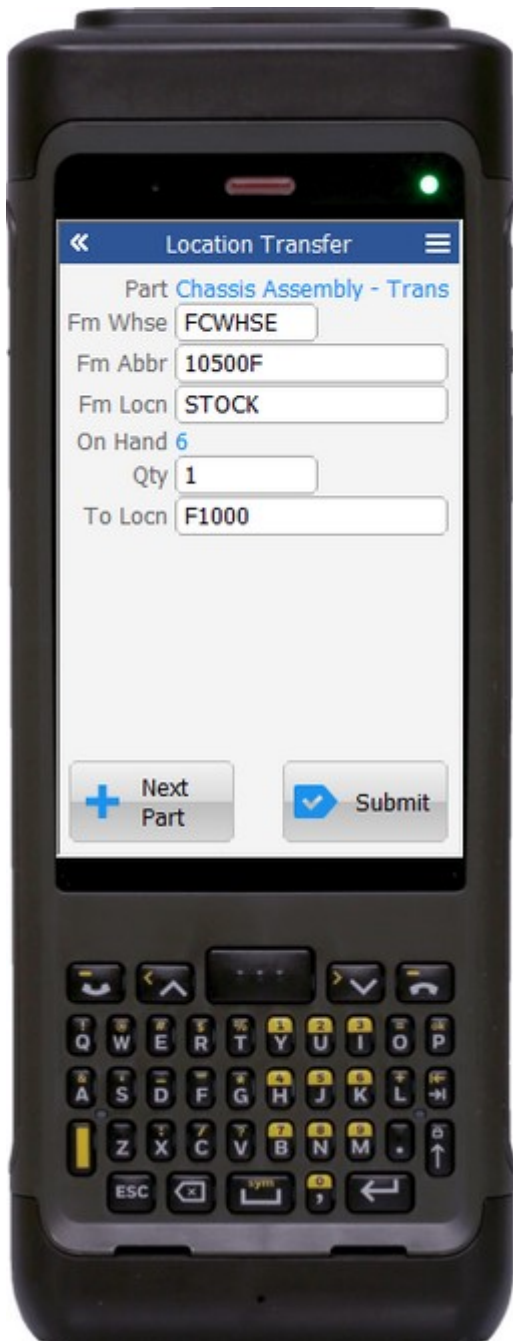
The user scans, enters, or searches for a part.

Optionally, the user could enter a Serial Lot Key value. If the part only has one revision value, it is auto populated, and the user is taken to page 2.

Otherwise, the user scans, enters, or searches for the part's revision.

A **Submit** button may show on page 1 if coming back from page 2 and after accumulating parts to transfer. It posts the list of parts to Costpoint and restarts the application.

The arrow in the upper left corner will take the user back to the menu.



Description of Workflow (2 of 2)

On page 2, the part selected from page 1 is displayed.

The user scans, enters, or searches a From Warehouse value if one is not defaulted automatically from the user properties.

The user scans, enters, or searches a From Abbreviation.

The user scans, enters, or searches a From Location. The on-hand quantity for that part and location will display.

The user enters the quantity of the part they wish to transfer.

The user scans, enters, or searches a To Location.

If the part is lot-controlled, the user scans, enters, or searches a lot number. Optionally, the user can enter a Serial Lot Key value. The on-hand quantity is recalculated including the lot value and display.

The user enters a Lot Quantity. The Lot Quantity can be less than or equal to the total quantity to be transferred.

If the part is serial-controlled, the user scans, enters, or searches a serial number. A counter to the right of the serial field will accumulate how many serials are entered. The focus stays in the

Serial field until the same number of entries match the quantity to transfer.

If the user taps the **Next Part** button, the entered values will be stored and accumulated with other parts until the **Submit** button is tapped on either page 1 or page 2.

The application will reset back to the Part field.

If the user taps the **Submit** button, the application posts all the parts to Costpoint and restarts the application.

The double arrows in the upper left corner will take the user back to page 1.

Technical Information

The following describes the tables used for validation, search lists, or functions for a given prompt in this application. If applicable, the default property is also included.

Prompt	Validation / Search – Tables / Web Method	Default Property
To Whse	PART / ITEM / INVT_WHS_LOC_SR_LT	User Property "WarehouseId"
SLK / Part	PART / ITEM	
Rev	WHSE	
Fm Whse	INVT_ABBRV_CD / INVT_WHSE_LOC	User Property "WarehouseId"
Fm Abbr	WHSE_LOC / INVT_WHSE_LOC	
Fm Locn	NA	
Qty	WHSE_LOC	
To Locn	INVT_WHS_LOC_SR_LT	
SLK / Lot		
Lot Qty	INVT_WHS_LOC_SR_LT	
Serial	INMLOXFR web service	
App Update	NA	

