

Deltek Costpoint – Inventory Location Lookup by Part

This application locates where a part is, and displays the part's project, how much is available, the lots it belongs to, and list of serial numbers available for the part.

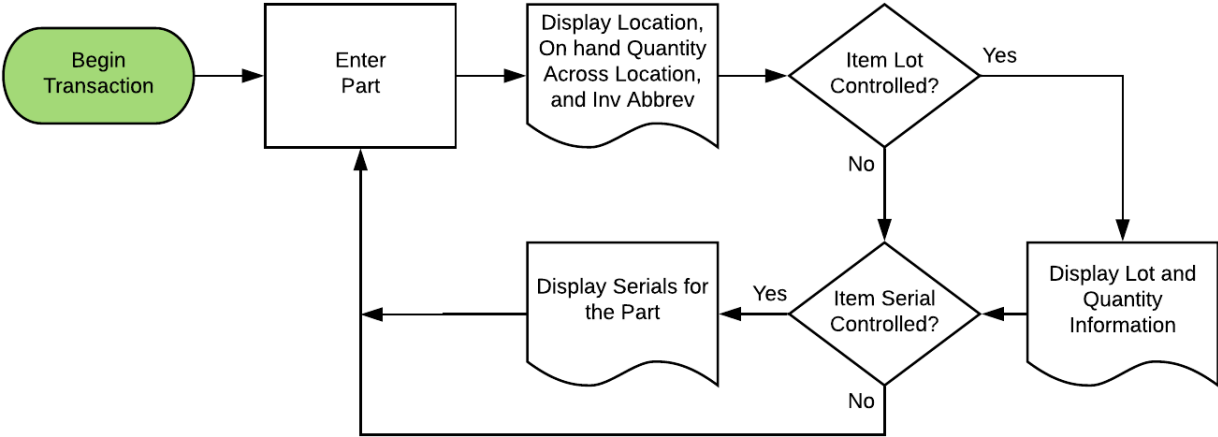


RFgen Functional Documentation 2019

RFgen provides its customers Costpoint-validated, ready-to-use suites of "Open Source" applications and a development environment that can be used to create new apps or to modify existing apps.

This document describes the business workflow and technical information used in this application.

Costpoint: Inventory - Location Lookup by Part Workflow



FIMLQ0300 Inventory – Location Lookup by Part

This application locates where a part is, and displays the part's project, how much is available, the lots it belongs to, and list of serial numbers available for the part.



Description of Workflow

First the user scans, enters, or searches for a Part. The part description will display.

A note will show if the part is not lot / serial controlled, if it is lot-controlled or if it is serial controlled.

At the bottom of the screen will be the corresponding buttons to view the potential lots and serial numbers.

The arrow in the upper left corner will take the user back to the menu.

Technical Information

The following describes the tables used for validation, search lists, or functions for a given prompt in this application. If applicable, the default property is also included.

Prompt	Validation / Search – Tables / Web Method
PART / ITEM	Part

