

Deltek Costpoint - Inventory Issue to Purchase Order

This application is used to issue parts to a purchase order (PO) and can also be used to reserve parts for a PO if Reservations is configured in Costpoint.

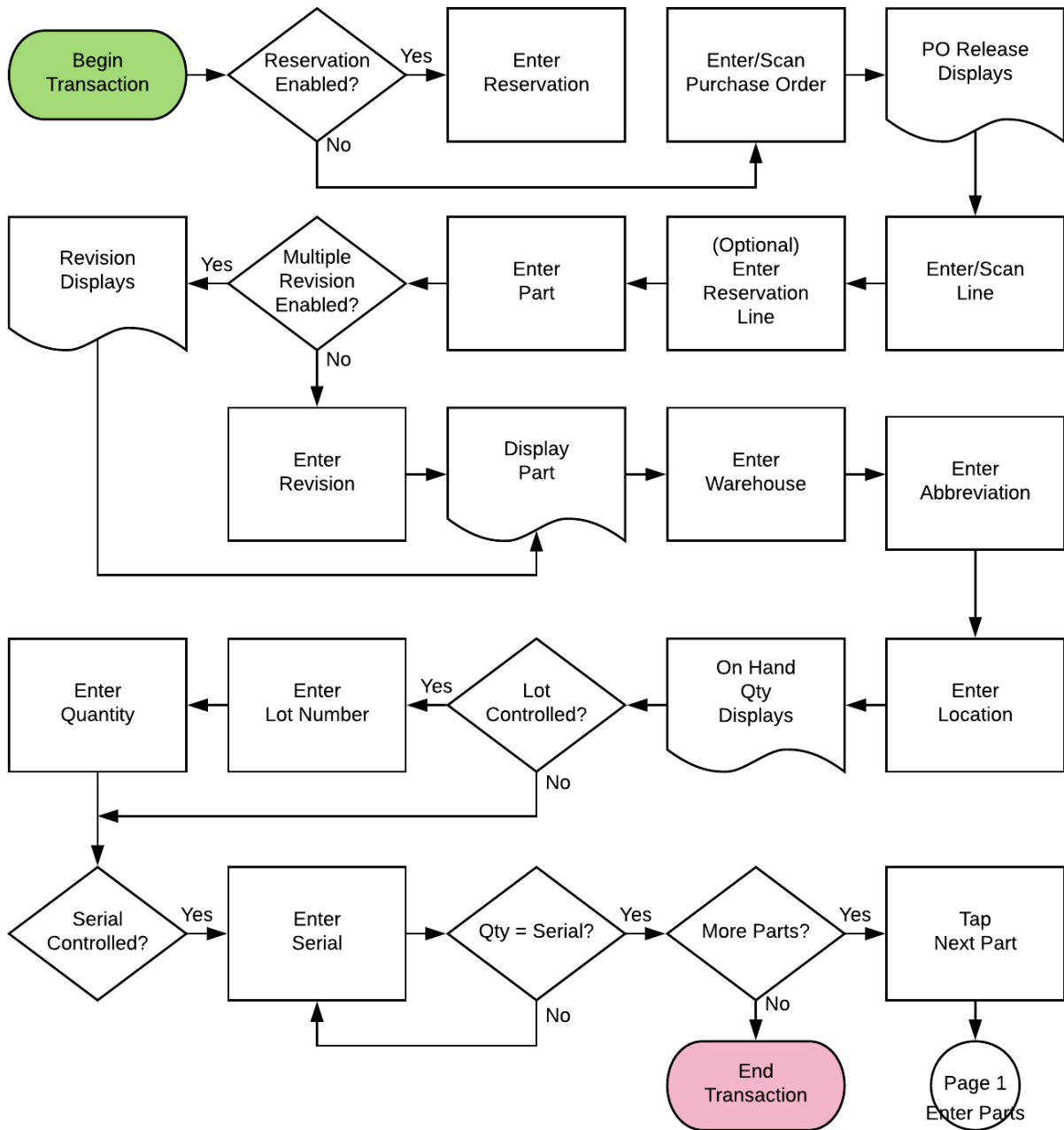


RFgen Functional Documentation 2019

RFgen provides its customers Costpoint-validated, ready-to-use suites of "Open Source" applications and a development environment that can be used to create new apps or to modify existing apps.

This document describes the business workflow and technical information used in this application.

Costpoint: Inventory - Issue to Purchase Order Workflow



FIMII0310 – Issue to Purchase Order

This application is used to issue parts to a purchase order (PO) and can also be used to reserve parts for a PO if Reservations is configured in Costpoint.



Description of Workflow (1 of 2)

First, if the configuration requires reservations, the user scans, searches, or enters a reservation. If reservations are not enabled, the field will not show.

Then the user scans, searches, or enters a purchase order (PO).

The PO Release value displays.

The user scans, searches, or enters a PO Line number.

If reservations are enabled, the user scans, searches, or enters a Reservation Line, otherwise the field will not show.

The user scans, enters, or searches for a part. If the part only has one revision value, it will be auto populated, and the user taken to page 2.

Otherwise, the user scans, enters, or searches for the part's revision.

A **Submit** button may show on page 1 if coming back from page 2 and after accumulating parts to issue. It posts the list of parts to Costpoint and restarts the application.



The arrow in the upper left corner takes the user back to the menu.



Description of Workflow (2 of 2)

The part selected from page 1 is displayed and the user is taken to the Warehouse field.

The user scans, searches, or enters a warehouse value if one is not defaulted automatically from the user properties.

The user scans, searches, or enters an abbreviation.

The user scans, searches, or enters a location. The on-hand quantity for that part and location displays.

If the part is lot-controlled, the user scans, searches, or enters a lot number. The on-hand quantity will be recalculated including the lot value and display.

The user enters the quantity of the part they wish to issue to the purchase order.

If the part is serial-controlled, the user scans, searches, or enters a serial number. A counter to the right of the serial field will accumulate how many serials are entered.

The focus stays in the Serial field until the same number of entries match the quantity to issue.



If the user presses **Enter** with the field blank, the application will reduce the issue quantity to the number of serials entered.

If the user taps the **Next Part** button, the entered values will be stored and accumulated with other parts until the **Submit** button is tapped on either page 1 or page 2. The application will reset back to the Part field.

If the user taps the **Submit** button, the application posts all the parts to Costpoint and restarts the application.

The double arrows in the upper left corner will take the user back to page 1.

Technical Information

The following describes the tables used for validation, search lists, or functions for a given prompt in this application. If applicable, the default property is also included.

Prompt	Validation / Search – Tables / Web Method	Default Property
Res	RES_HDR	
PO	PO_HDR	
Line	PO_LN	
ResLine	RES_LN	
Part	PART / ITEM	
Rev	PART / ITEM	
Whse	WHSE	User Property "WarehouseId"
Abbr	PART / ITEM	
Locn	WHSE_LOC / INVT_WHSE_LOC	
Lot	INVT_WHS_LOC_SR_LT	
Qty		
Serial	INVT_WHS_LOC_SR_LT	
App Update	INMPAISS web service	

