

Deltek Costpoint – Inventory Actual Counts

This application updates Costpoint with the count of a line on an Inventory Count Document.



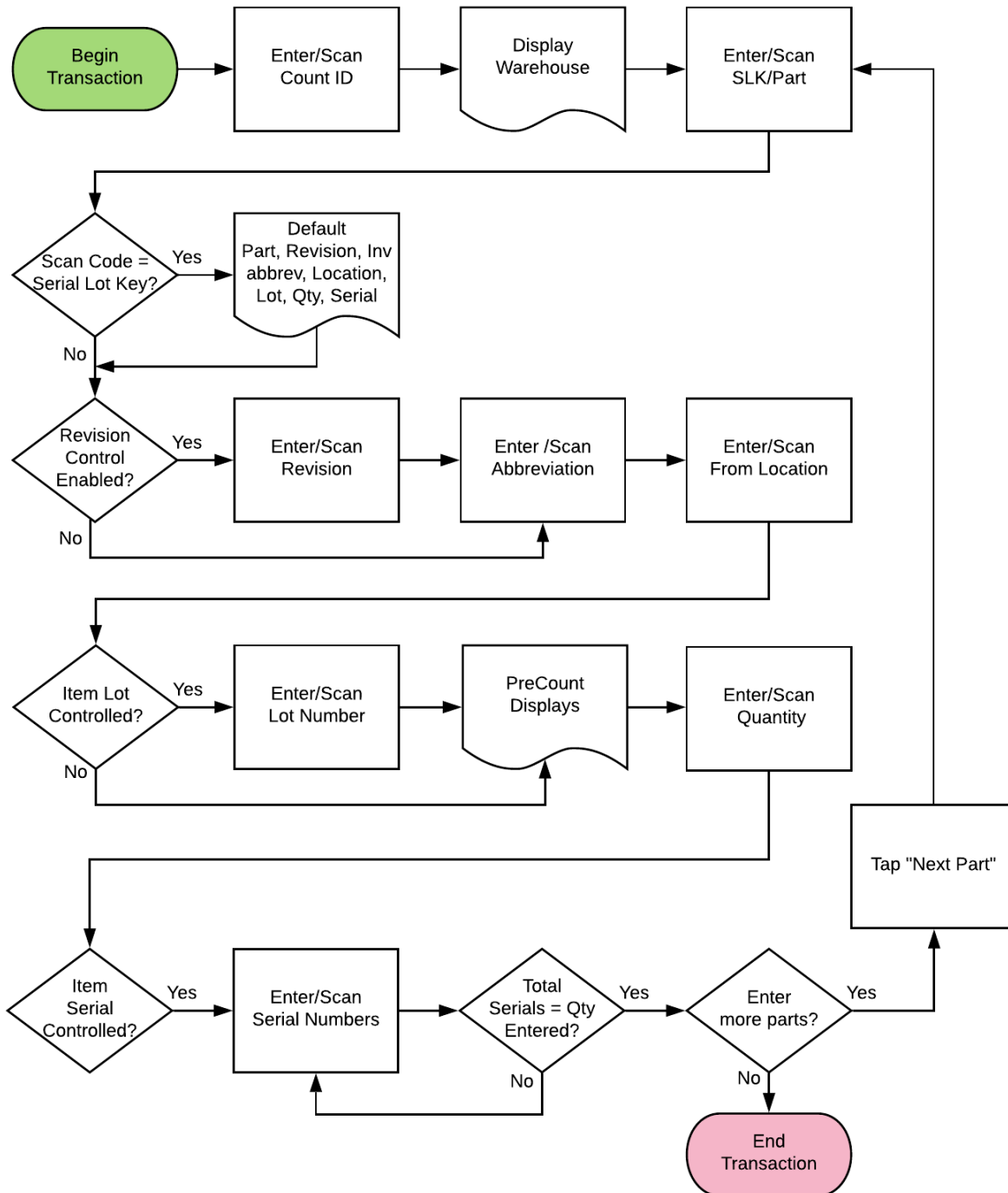
RFgen Functional Documentation

2019

RFgen provides its customers Costpoint-validated, ready-to-use suites of “Open Source” applications and a development environment that can be used to create new apps or to modify existing apps.

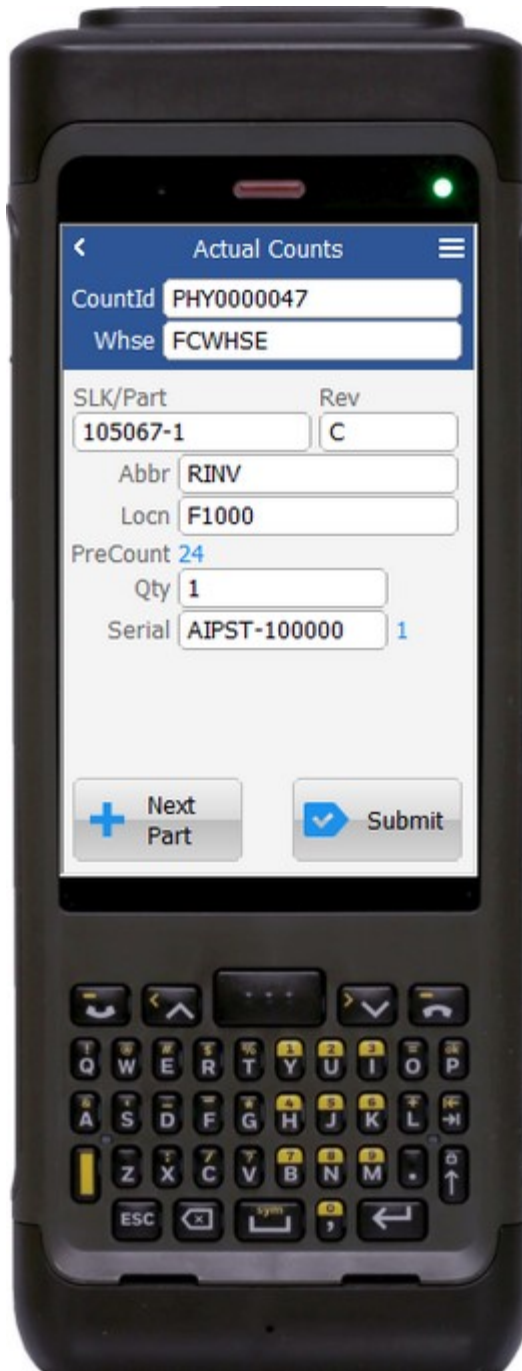
This document describes the business workflow and technical information used in this application.

Costpoint: Inventory Actual Counts Workflow



FIMIA0300 - Inventory Actual Counts

This application updates Costpoint with the count of a line on an Inventory Count Document.



Description of Workflow

First the user will scan, enter, or search for an Inventory Count document.

Searching for a document will show only the open documents. The warehouse value will be defaulted by the document.

The user scans, enters, or searches for a Serial Lot Key (SLK) or a part number. If an SLK value is entered, all the remaining fields on the screen will pre-fill with values including lot or serial number information.

If a part number is entered, the revision field will default unless there are more than one revision for the entered part.

If necessary, the user scans, enters, or searches for a revision for the part.

The user scans, enters, or searches for a project abbreviation.

The user scans, enters, or searches for a location that must exist on the Inventory Count document. After validation, the pre-count quantity displays on the screen.

If necessary, the user scans, enters, or searches the lot for the part. The lot value must be on the



Inventory Count document. This would also change the pre-count quantity by taking the lot into consideration.

The user enters the count quantity of the selected part.

If necessary, the user scans, enters, or searches for a serial number of the part. Focus will remain in this field until the total number of serial numbers matches the quantity they just entered. A serial number counter will keep track of the serials entered for convenience.

If the user clicks the **Next Part** button, the screen will clear back to the SLK/Part field and the user will begin again.

Finally, once the user is finished entering all the parts, the **Submit** button posts the results to Costpoint and resets the entire screen.

The arrow in the upper left corner will take the user back to the menu.



Technical Information

The following describes the tables used for validation, search lists, or functions for a given prompt in this application. If applicable, the default property is also included.

Prompt	Validation / Search – Tables / Web Method
CountID	PHYS_COUNT
Whse	PHYS_COUNT
SLK/Part	PHYS_COUNT_DETL / PART / ITEM / PHYS_CNT_DTL_SR_LT
Rev	PHYS_COUNT_DETL / PART / ITEM
Abbr	PHYS_COUNT_DETL
Locn	PHYS_COUNT_DETL
Lot	PHYS_CNT_DTL_SR_LT
Qty	NA
Serial	PHYS_CNT_DTL_SR_LT / INVT_WHS_LOC_SR_LT
App Update	INMPCACT web service

Customization Considerations

If you are planning on creating a new version of this application or modifying it for a customer, consider asking these questions to help prepare your list of customization requirements.

1. What do you want done if a material is not found?
2. What do you want done if a material is found that doesn't exist on the document?
3. Do you use hard errors or soft warning when a count is not expected?

