

Oracle JD Edwards INVENTORY TRANSFER

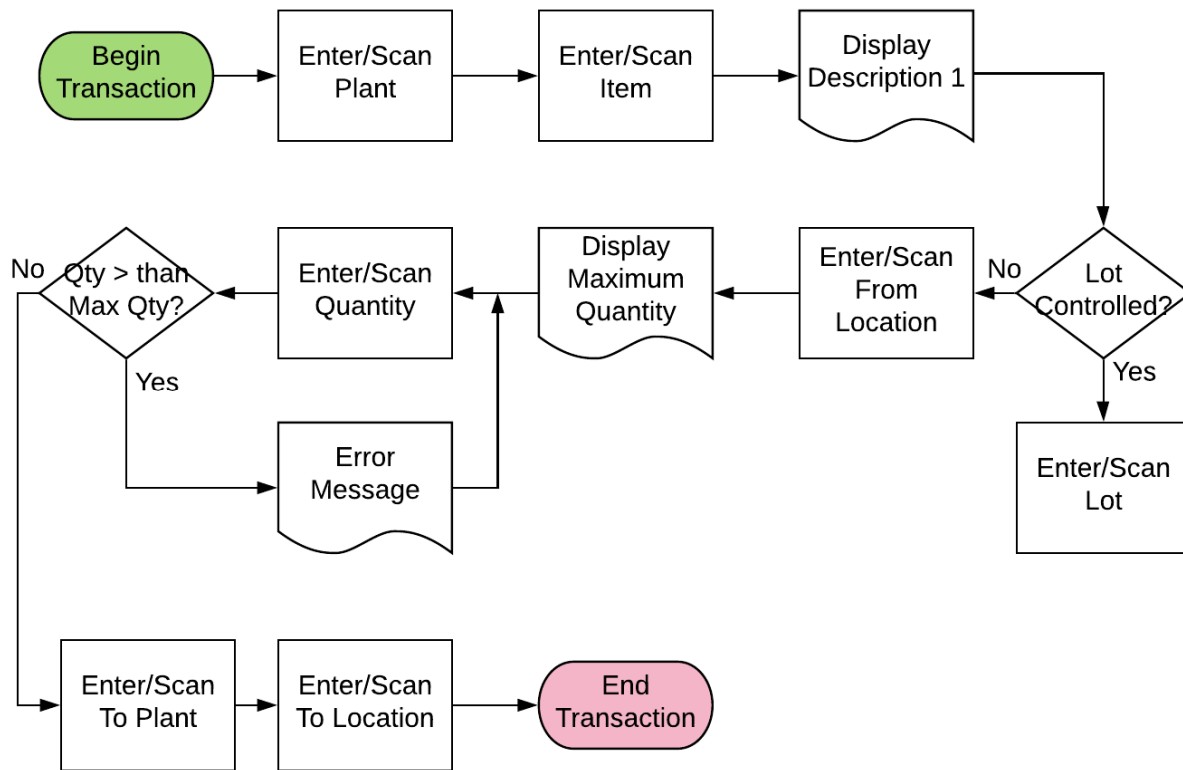
This application transfers inventory between locations within a plant or between plants.

RFgen Open Source Software Solutions
2019

RFgen provides its customers Oracle-validated, ready-to-use suites of Open Source applications and a development environment that can be used to create new apps or to modify existing apps.

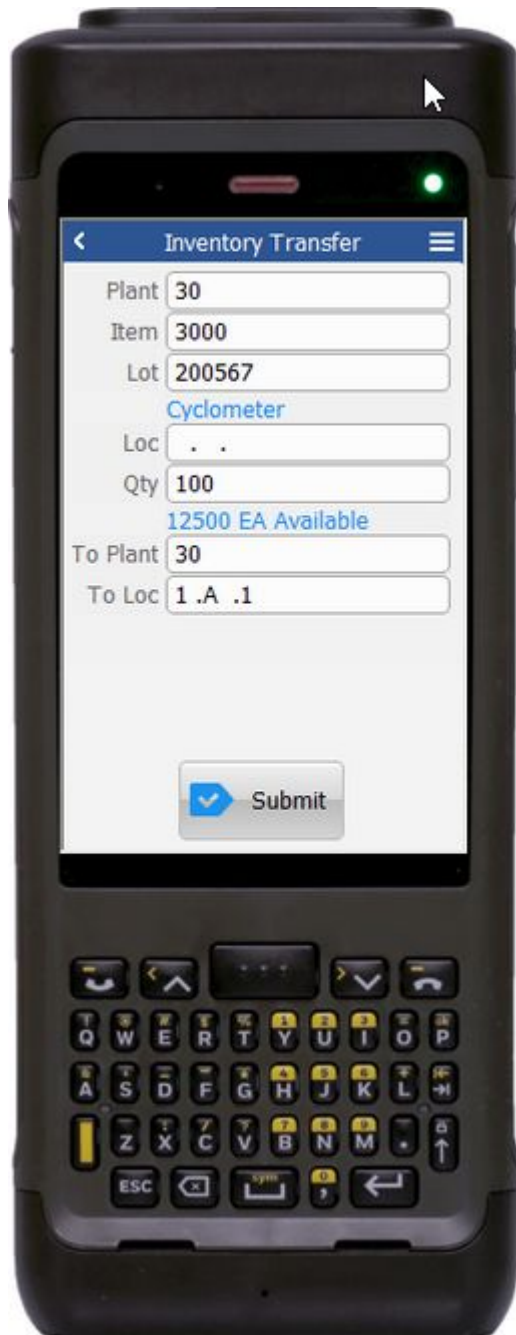
This document describes the business workflow and technical information used in this application.

JD Edwards: IM - Inventory Transfer Workflow



FIMIT0100 IM – Inventory Transfer

This application transfers inventory between locations within a plant or between plants.



Description of Workflow

First the user scans, enters, or searches for a plant if one does not default from the user profile.

The user scans, enters, or searches item ID.

The item's description displays.

If the item is lot-controlled, the value is retrieved and displayed automatically. The user can also scan, enter or search the lot value.

If the item is not lot-controlled the Lot field does not display.

The user scans or selects the location (Loc) where the item is being transferred from.

The maximum quantity (Qty) for this location displays.

The user enters the quantity to be transferred.

If the amount entered is less than or equal to the amount available for transfer, the entry is accepted. If its not, an error message is displayed. The user continues only after an acceptable quantity is entered.

The use scans, enters, or searches the To Plant/Branch Plant.

If the transfers are in the same plant, the Plant code can be entered automatically.

Lastly, the user scans, enters or searches the To Location (Loc) and taps **Submit**.



The **Submit** button sends the transaction to JDE. If the user is connected, the Inventory Transfer record is recorded and the **Item Ledger (Cardex)** is updated in JD Edwards.

The arrow in the upper left corner of returns the user to the menu.

Technical Information

The following describes the tables used for validation, search lists, or functions for a given prompt in this application. If applicable, the default property is also included.

Prompt	Validation / Search – Tables / Functions	Default Property / in- code defaults
Plant	F41001 F0006	RFgen User Profile
Item	F4101	
Lot	F41021, F4108	
Loc (From)	F41021, F4100	
Quantity	F41021	
Branch Plant	F4102, F41021	
Location (To)	F41021, F4100	

Customization Considerations

1. What processing options are set to process the inventory transfer?
2. What document types are used?
3. Is the branch plant/plant default based on the user?
4. Will negative quantities be allowed?
5. Is lot-control or serialization used?
6. Do you allow transfer of inventory between plants? To an existing item branch plant? To a non-existing item branch plant?
7. Do you allow transfer of items whose lots are on "On Hold" status?



8. If yes, do you use lot group status (alias : LOTGRP) or are there any scenarios or lot statuses that transfer is allowed?
9. Is there any specific locations within the same branch plant whereby transfer is not allowed?