

DataMAX Software Group, Inc.  
El Dorado Hills, CA  
USA

# Oracle JD Edwards INVENTORY MANAGEMENT- INVENTORY RECLASSIFICATION

This application helps you change the classification of an item and move its location.

---

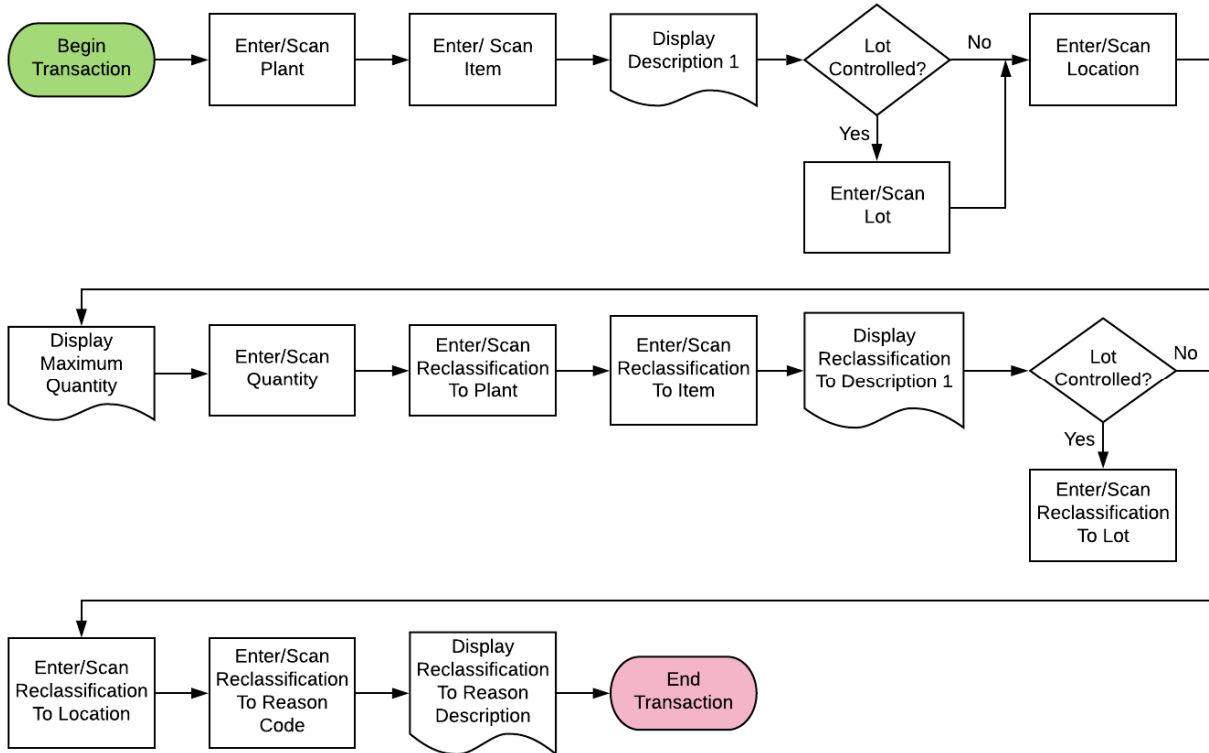
RFgen Functional Documentation  
2019

RFgen provides its customers Oracle-validated, ready-to-use suites of Open Source applications and a development environment that can be used to create new apps or to modify existing apps.

This document describes the business workflow and technical information used in this application.

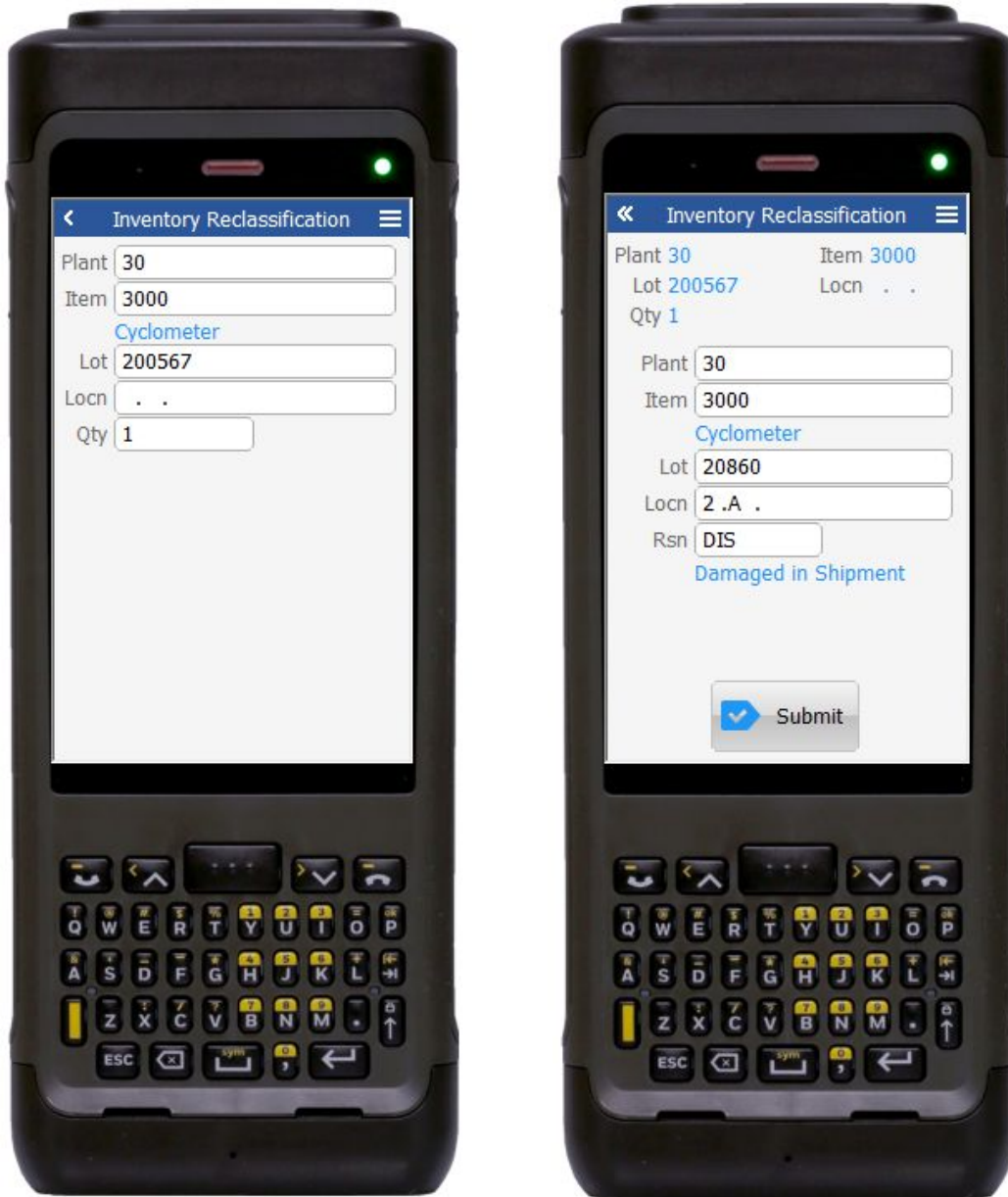


# JD Edwards: IM - Inventory Reclassification Workflow



## FIMIR0100 IM - Inventory Reclassification

This application to reclassify inventory i.e. to take an item out of stock with reason code and put it in another location perhaps at a different value with (a new lot number if desired) within a warehouse.



*Pages 1 and 2 of Inventory Reclassification*

## Description of Workflow

First the user will scan, enter, or search for a plant if one does not default from the user profile.

Next, the user scans, enters, or searches and selects the **Item ID**. The item's description displays under the **Lot** field.

If the Lot is controlled, the user scans, enters, or searches and selects the current **Lot** value. In the search screen, the lot number, its location, quantity and the lot status are displayed.

The user can user scans, enters, or searches and selects the current location (**Locn**) of the item or lot.

The user scans, enters, or searches and selects the quantity (**Qty**) to be reclassified. Depending on the reclassification rules setup in JDE, an error prompt may disallow entries with values greater than the available quantity.

### Page 2 Inventory Reclassification

On the second page, the user enters or search and selects the **Plant ID** where the item will be reclassified.

Next, the user enters or searches and selects the **Item** number that the item will be reclassified under.

The user enters or searches and selects the **Lot** number that the item will be reclassified to.

The user enters or searches and selects the new warehouse location code (**Locn**) for the item.

The user enters or searches and selects a reason (**Rsn**) for the reclassification. This entry is mandatory.

Lastly the user clicks **Submit**.

If this is an online transaction, two Inventory Transfer records are recorded, and the Item Ledger (Cardex) is updated in JD Edwards.

If this is a batch transaction, the changes are stored in the mobile device. When the user reconnects to their network, the information for the two Inventory Transfer records are recorded and the Item Ledger (Cardex) is updated in JD Edwards.



**Note** the RFgen application presented in this document is based on JDE Interactive Application version ZJDE0001. Your display of the same application may look different due to the JDE version and settings in your environment.

## Technical Information

The following describes the prompts and default tables used in this application.

Prompt	Table
Plant	F41001, F0006
To Plant	F41001
From Item	F4101, F4102, F4108
From Location	F41021, F41001, F4100
From Lot	F4108, F41021
Qty	F4102, F41021
To Item	F4101, F41021
To Location	F41021, F41001, F4100
To Lot	F41021, F4108
Reason	F0005

## Customization Considerations

If you are planning on creating a new version of this application or modifying it for a customer, consider asking these questions to help prepare your list of customization requirements.

1. What OW version is used to process the Inventory Reclassification transaction?
2. What processing options are set to process Inventory Reclassifications?
3. Will an item be allowed to be transferred and reclassified to another Branch?
4. Will the Branch default in based on user?
5. Are limitations placed on any Inventory Reclassifications such as dollar amounts?
6. Do you use locations, and if so, are there any special circumstances that need to be considered? (i.e. always reclassified from or to a particular location?)
7. Do you allow reclassification quantity greater than available?
8. Is lot control in use?
9. Is serialization turned on for any items?

