

DataMAX Software Group, Inc.
El Dorado Hills, CA
USA

Oracle E-Business Suite Inventory Management (IM) Move Order

This application is used to move material from one location to another location.

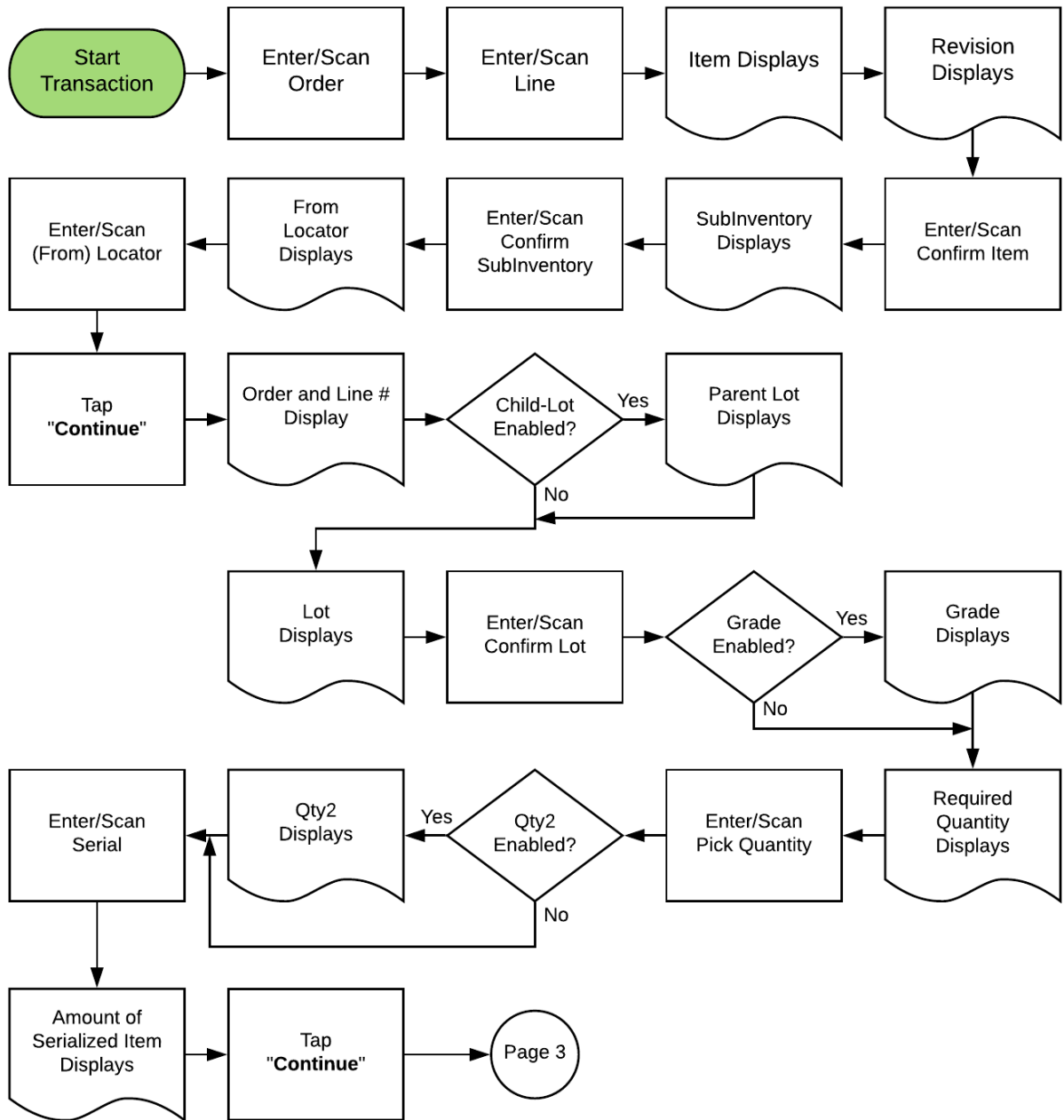


RFgen Functional Documentation 2019

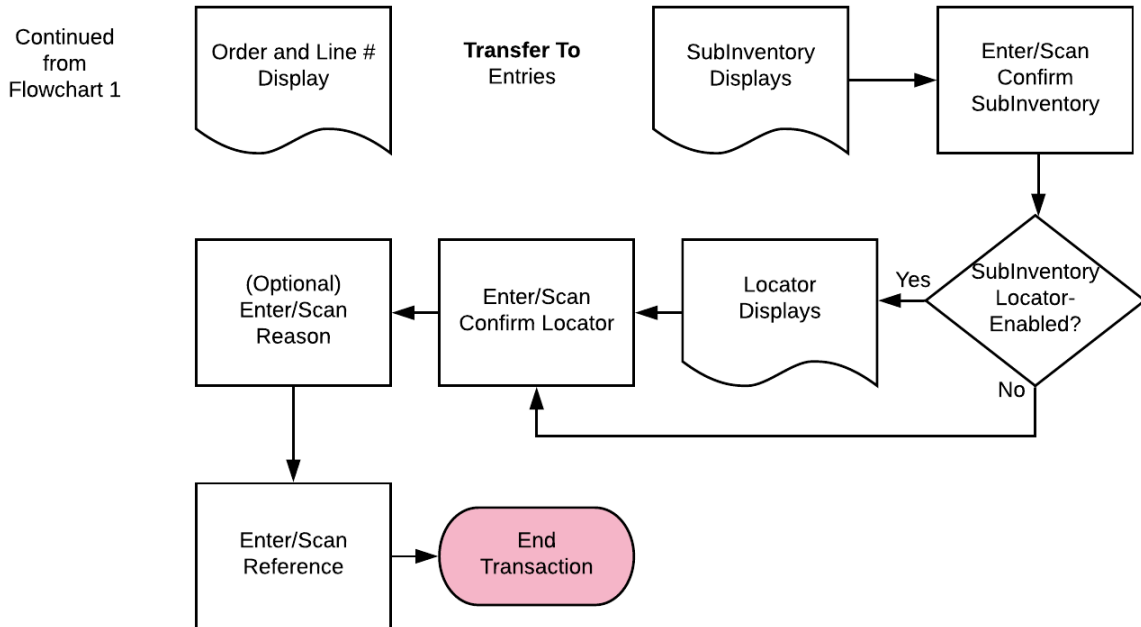
RFgen provides its customers Oracle-validated, ready-to-use suites of "Open Source" applications and a development environment that can be used to create new apps or to modify existing apps.

In this document is a description of the application workflow details, technical information, and workflow analysis questions for planning customizations to this application.

Oracle EBS: IM – Move Order Workflow (1 of 2)

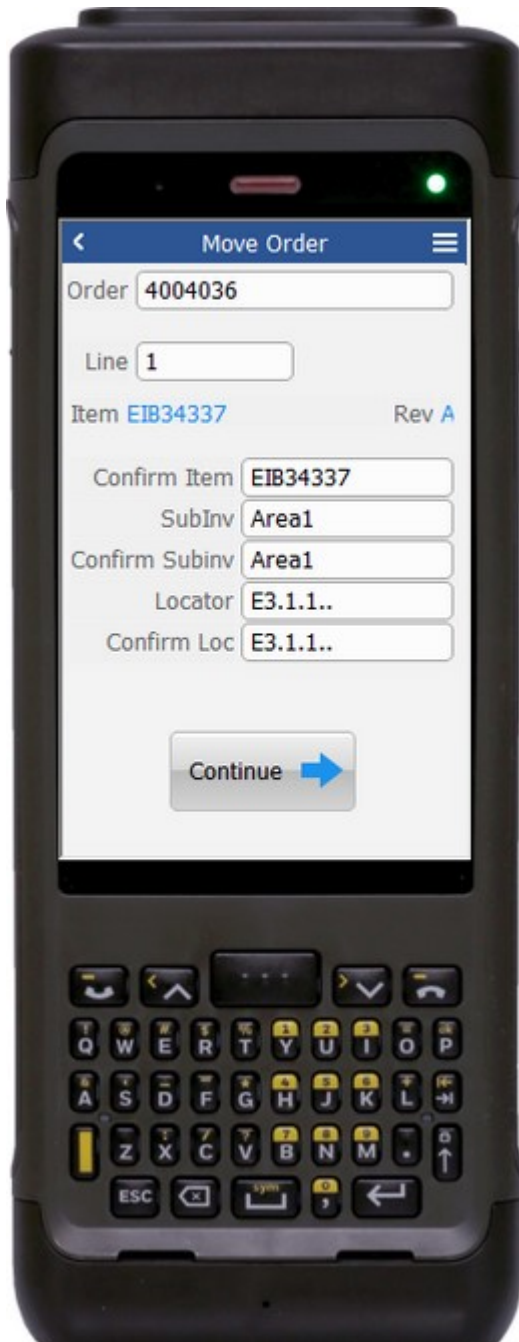


Oracle EBS: IM – Move Order Workflow (2 of 2)



FIMMO0300 IM – Move Order

This application is used to move material from one location to another.



Workflow Details (1 of 3)

First the user scans, enters, or searches the Move Order number in the Order field.

Then the user scans, enters, or searches the Move Order Line in Line field.

The item number displays in the Item field.
The item revision displays in the Rev field.

The user scans, enters, or searches the item number in the Confirm Item field.

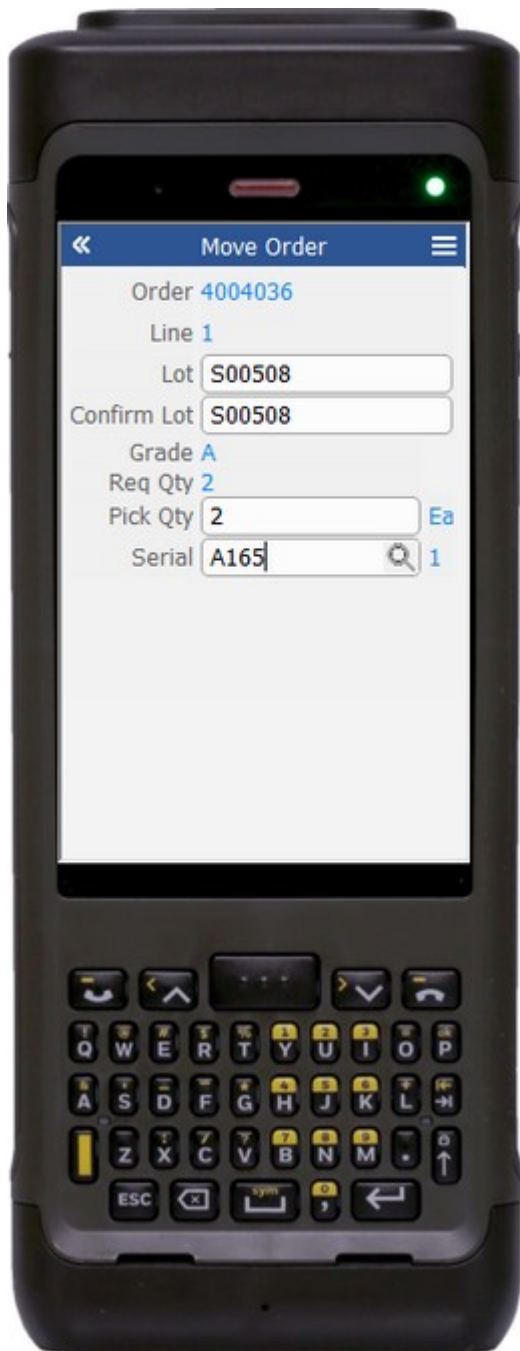
The subinventory value displays in the SubInv field.

The user scans, enters, or searches the source subinventory in the Confirm SubInv field.

The source locator value displays in the Locator field.

The user scans, enters, or searches the source locator in the Confirm Loc field.

The **Continue** button takes the user to page 2.



Workflow Details (2 of 3)

On page 2 are more entries for the Move Order number and Line from page 1.

If the item is child lot-enabled, the Parent Lot field is displayed.

The user scans, enters, or searches the lot number in Confirm Lot field.

If the item is not lot-enabled, then the lot field is not visible.

If the item is lot-enabled and the lot is grade enabled, then the lot grade displays.

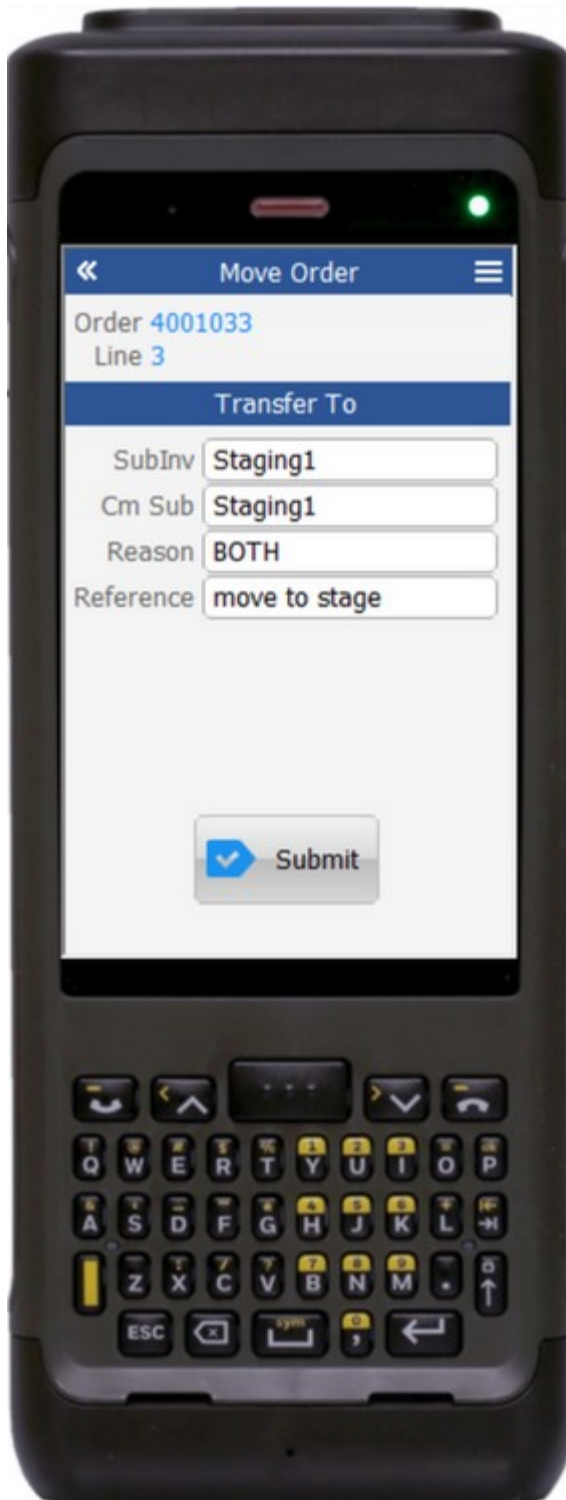
Next, the user enters or scans the pick quantity.

If the item has a secondary UOM enabled, then the user scans, enters, or searches the Qty2 field. Its unit of measure (UOM) displays.

The user scans, enters, or searches the serial number. A serial counter of the serial quantity to be moved displays.

The **Continue** button takes the user to page 2.

The arrow in the upper left corner takes the user back to page 1.



Workflow Details (3 of 3)

On page 3 are more entries for the Move Order number and Line from page 1.

The destination subinventory displays in the SubInv field.

The user enters or scans the destination subinventory in Cm Sub field.

If the destination subinventory is locator-controlled then the Loc field displays.

If its enabled, then the user will enter, scan, or search the Cm Loc field.

The user enters, scans or searches the reason in the Reason field. This entry is optional.

The user enters, scans or searches the application reference in the Reference field. This entry is optional.

The **Submit** button sends the transaction to the EBS system and resets the form on page 1.

The arrow in the upper left corner takes the user back to page 2.

Technical Information

The following describes the tables used for validation, search lists, or functions for a given prompt in this application.

| Prompt | Validation / Search – Tables / Functions |
|---------|--|
| Order | Mtl_txn_request_headers, mtl_txn_request_lines, oe_order_lines_all |
| Line | Mtl_txn_request_lines, mtl_system_items_b_kfv, mtl_material_transactions_temp, mtl_parameters, mtl_secondary_inventories |
| SubInv | Mtl_secondary_inventories, mtl_item_sub_inventories |
| Locator | Mtl_item_locations_kfv, mtl_secondary_locators, mtl_parameters, mtl_secondary_inventories |
| Rev | Mtl_item_revisions_b |
| Lot | Mtl_transaction_lots_temp, mtl_lot_numbers, mtl_onhand_quantities_detail |
| Serial | Mtl_serial_numbers_temp, mtl_serial_numbers |
| SubInv | Mtl_secondary_inventories, mtl_item_sub_inventories, mtl_parameters, mtl_secondary_inventories |
| Loc | Mtl_item_locations_kfv, mtl_secondary_locators |
| Reason | Mtl_transaction_reasons |
| Macro | Mtl_material_transactions_temp , mtl_serial_numbers_temp, mtl_transactions_lots_temp, mtl_txn_request_lines, mtl_reservations, org_acct_periods, inv_lpn_trx_pub.process_lpn_trx |

Customization Considerations

If you are planning on creating a new version of this application or modifying it for a customer, the following questions should be considered before you start.

1. Are there serial-controlled items?
2. Are there lot-controlled items?
3. Are there child-enabled, lot-controlled items?
4. Are there revision-controlled items?
5. Are there plants/warehouses that are project-enabled?
6. Is the grade enabled for all items?

