

# SAP INVENTORY MANAGEMENT – ISSUE TO SCRAP

This application issues a material to or from inventory cost center. The menu choices include issuing to a scrap cost center and reversing an issue from a scrap cost center.

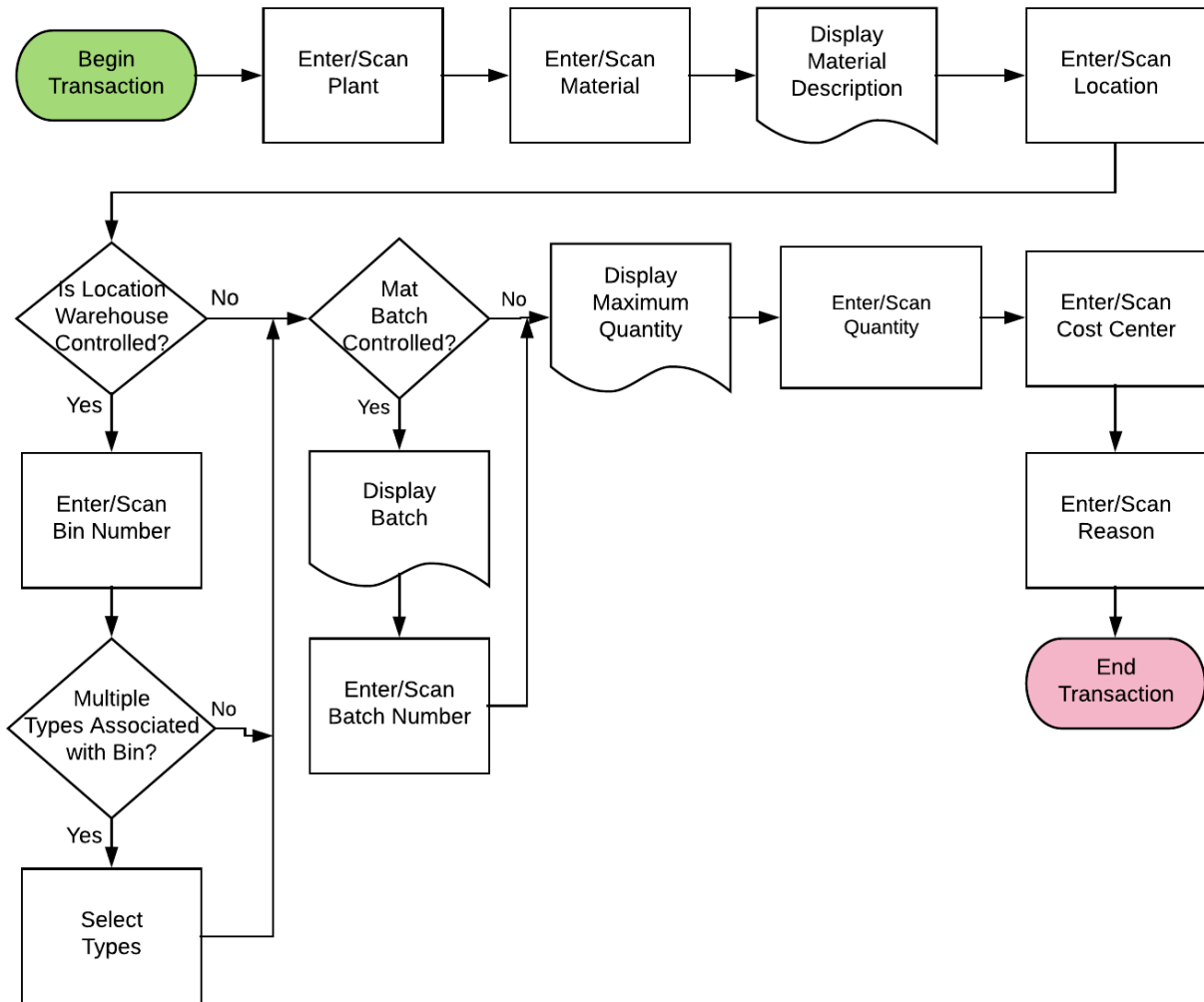
---

RFgen Functional Documentation  
2019

RFgen provides its customers SAP-validated, ready-to-use suites of “Open Source” applications and a development environment that can be used to create new apps or to modify existing apps.

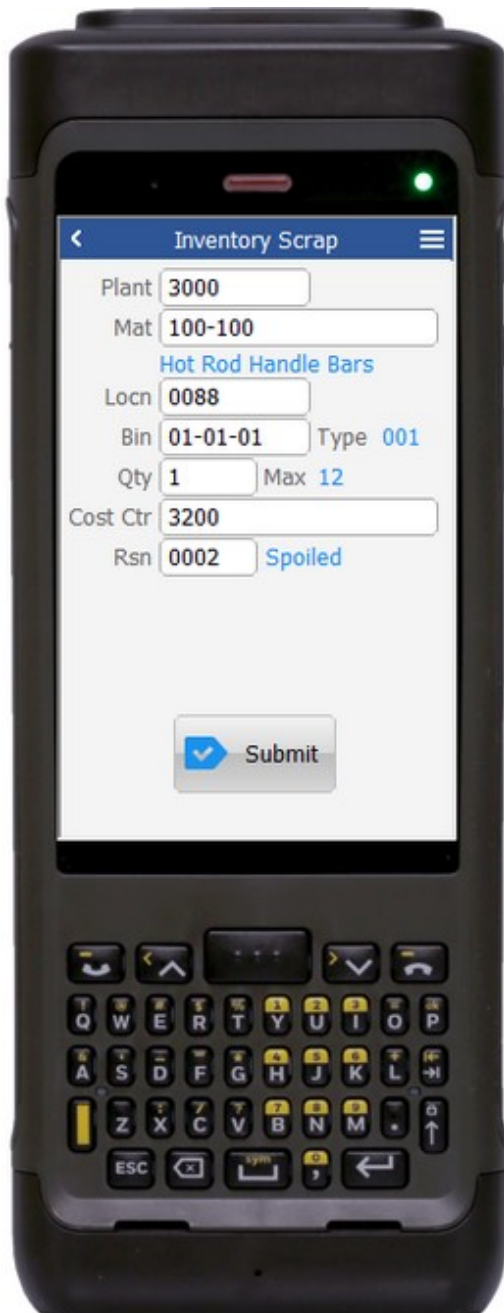
This document describes the business workflow and technical information used in this application.

## SAP: Inventory Management (IM) – Issue to Scrap



## FIMII0215 IM – Issue to Scrap

This application issues a material to or from inventory cost center. The menu choices include issuing to a scrap cost center and reversing an issue from a scrap cost center.



### Description of Workflow

First the user scans, enters, or searches for a plant if one does not default from the user profile.

The user then scans, enters, or searches for a material. To search for a material, the first one or more characters must be entered to reduce the search list results. The material's description will be displayed.

The user scans, enters, or searches for a location where the material exists. If the location is a warehouse-controlled location the Bin and Type fields will appear.

The user scans, enters, or searches for a Bin number that is assigned to the material specified.

If there is more than one Type associated with that bin, the user will be prompted to pick one from a list.

If the material is Batch-controlled, the Batch field will be visible.

The user scans, enters, or searches for a batch number that is assigned to the material specified.

The maximum quantity available of the material is shown based on Plant, Location, Bin, and / or Batch values.



The user enters the quantity they wish to issue.

The user scans, enters, or searches for a Cost Center. After validation the Submit button appears unless a reason code is required.

The user scans, enters, or searches for a reason if required. After validation the Submit button appears.

The Submit button will post the issue of this material to SAP and reset the application.

The arrow in the upper left corner will take the user back to the menu.

## Technical Information

This lists the tables used for validations, searches and defaults by prompt.

Prompt	Table or Busines Function	Description
Plant	T001W	User Property "PLANT"
Mat	BAPI_MATERIAL_GET_DETAIL / BAPI_MATERIAL_GETLIST / MARA / MARC	NA
Locn	BAPI_MATERIAL_GETLIST / T320 / T001L / T159L / T156 / MARD / MCHB / MSPR / MSKA / LQUA	NA
Bin	LAGP / LQUA / MARD	NA
Type	LAGP	NA
Batch	MCHB / LQUA	NA
Qty		NA
Cost Ctr	BAPI_COSTCENTER_GETLIST	
Rsn	T156	
App Update	BAPI_GOODSMVT_CREATE	

