

# SAP

## INVENTORY MANAGEMENT – INVENTORY TRANSFERS

This application transfers a material from one place to another. This application can be called from the menu to perform many different types of transfers; Plant to Plant, Plant to Plant with Transit status, Plant to Plant Reversal, Location to Location, To Location from Transit, and Bin to Bin.

---

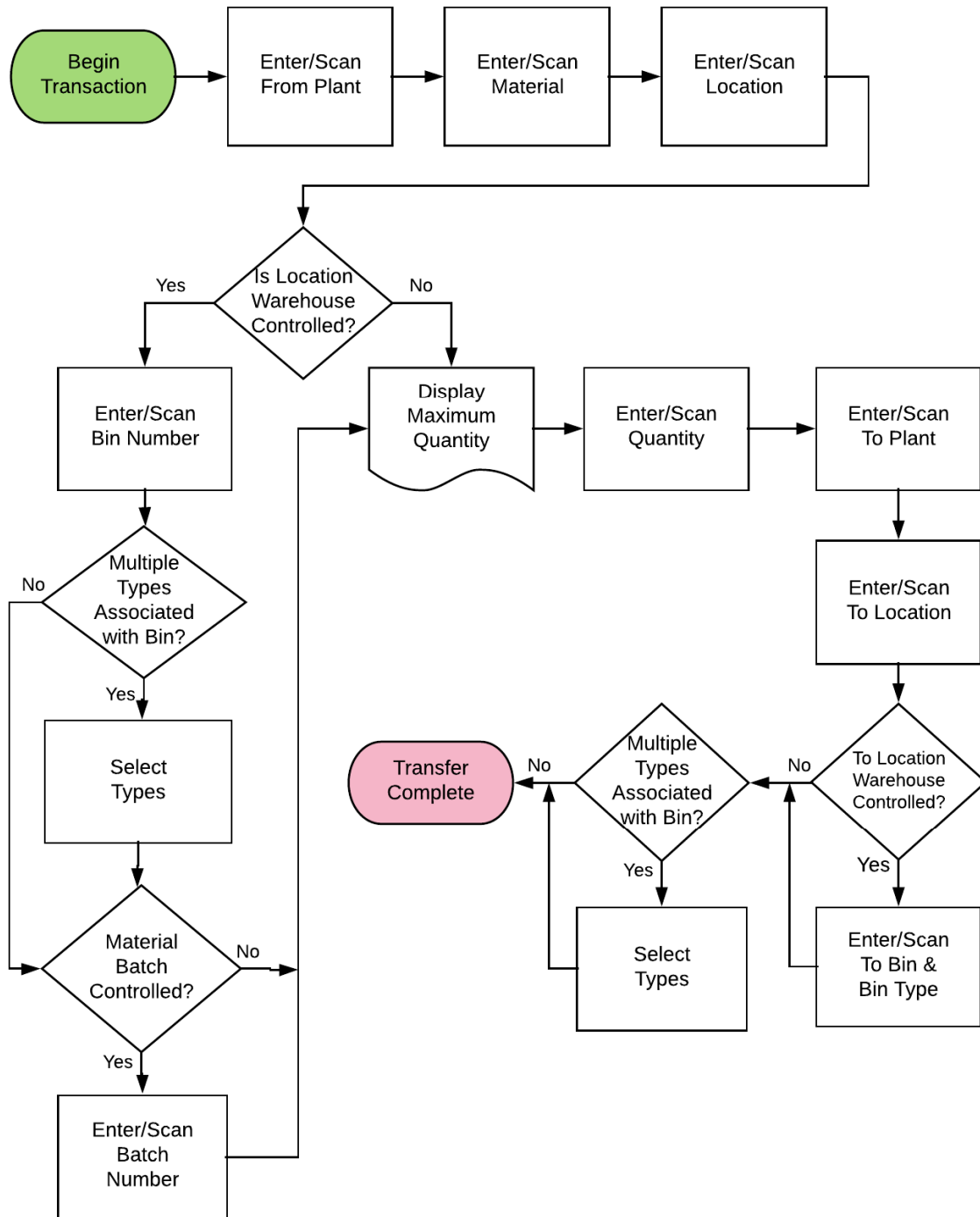
RFgen Functional Documentation

2019

RFgen provides its customers SAP-validated, ready-to-use suites of “Open Source” applications and a development environment that can be used to create new apps or to modify existing apps.

This document describes the business workflow and technical information used in this application.

# SAP: Inventory Management (IM) – Inventory Transfers



## FIMIT0200 IM – Inventory Transfers

This application can be called from the menu to perform many different types of transfers; Plant to Plant, Plant to Plant with Transit status, Plant to Plant Reversal, Location to Location, To Location from Transit, and Bin to Bin.



### Description of Workflow

First the user scans, enters, or searches for a plant value.

The user then scans, enters, or searches for a material.

To search for a material, the first one or more characters must be entered to reduce the search list results.

The material's description displays.

If the material is Batch-controlled, the Batch field will be visible.

The user scans, enters, or searches for a location where the material exists.

If the location is a warehouse-controlled location the Bin and Type fields will appear.

The user scans, enters, or searches for a Bin number that is assigned to the material specified.

If there is more than one Type associated with that bin, the user will be prompted to pick one from a list.

The user scans, enters, or searches for a batch number that is assigned to the material specified.



The maximum quantity available of the material is shown.

The user enters the quantity they wish to transfer.

The user scans, enters, or searches for the destination plant. Under some circumstances the destination plant needs to be different than the source plant.

The user scans, enters, or searches for a destination location.

If the destination location is a warehouse-controlled location the destination Bin and Type fields will appear.

The user scans, enters, or searches for a destination Bin number that is assigned to the location specified.

If there is more than one Type associated with that bin, the user will be prompted to pick one from a list.

The Submit button will post the transfer of this material to SAP and reset the application.

The arrow in the upper left corner of page 1 will take the user back to the menu.

## Technical Information

This lists the tables used for validations, searches and defaults by prompt.

Prompt	Table	Description
Plant	T001W	User Property "PLANT"
Mat	BAPI_MATERIAL_GET_DETAIL / BAPI_MATERIAL_GETLIST / MARA / MARC	NA
Locn	BAPI_MATERIAL_GETLIST / T320 / T001L / T159L / T156 / MARD / MCHB / MSPR / MSKA / LQUA	NA
Bin	LAGP / LQUA	NA



<b>Prompt</b>	<b>Table</b>	<b>Description</b>
Type	LAGP	NA
Batch	MARD / MCHB / MSPR / MSKA / LQUA	NA
Qty		NA
To Plant	T001W	NA
To Locn	BAPI_MATERIAL_GETLIST / T320 / T001L / T159L / T156	NA
To Bin	LAGP	NA
To Type	LAGP	NA
App Update	BAPI_GOODSMVT_CREATE	NA

