

SAP INVENTORY MANAGEMENT – ISSUE TO RESERVATION

This application will issue a material out of inventory to a Reservation.

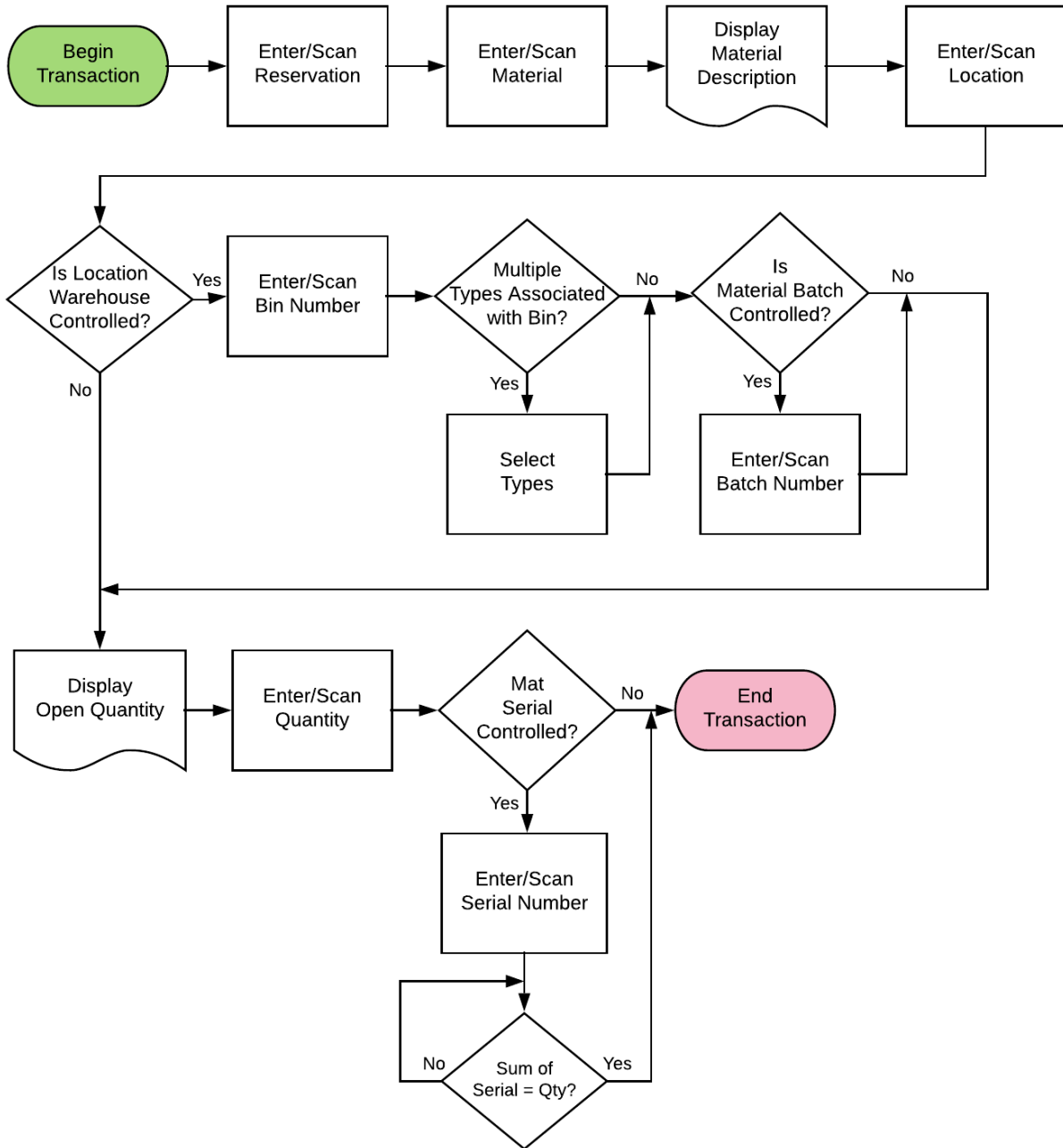
RFgen Functional Documentation

2019

RFgen provides its customers SAP-validated, ready-to-use suites of “Open Source” applications and a development environment that can be used to create new apps or to modify existing apps.

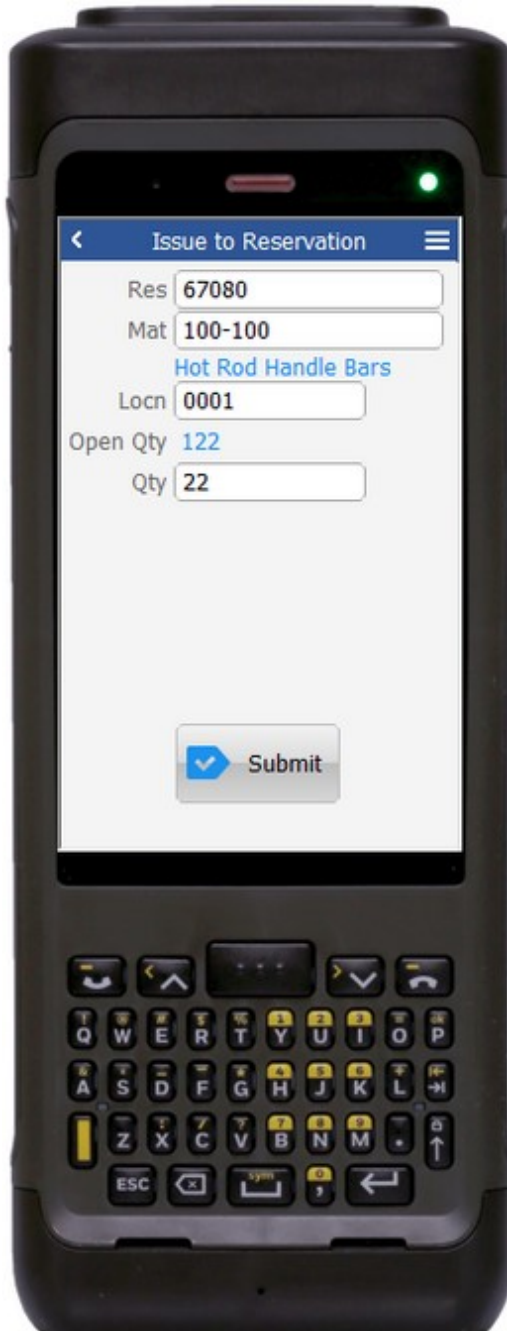
This document describes the business workflow and technical information used in this application.

SAP: Inventory Management (IM) – Issue To Reservation



FIMII0230 IM – Issue to Reservation

This application will issue a material out of inventory to a Reservation.



Description of Workflow

First the user scans or enters a reservation. The contents of the reservation are used to validate many of the following fields.

The user then scans, enters, or searches for a material. To search for a material, the first one or more characters must be entered to reduce the search list results. The material's description will be displayed.

If the material is Batch-controlled, the Batch field will be visible. If the material is serial-controlled, the Serial field will be visible.

The user scans, enters, or searches for a location where the material exists. If the location is a warehouse-controlled location the Bin and Type fields will appear.

The user scans, enters, or searches for a Bin number that is assigned to the material specified.

If there is more than one Type associated with that bin, the user will be prompted to pick one from a list.

The user scans, enters, or searches for a batch number that is assigned to the material specified. The open quantity available of the material for that batch is shown.

The user enters the quantity they wish to issue.



If entering serial numbers, the Serial field will continue to have focus until the count of serial number is equal to the quantity entered in the Quantity field.

The Submit button will post the issue of this material to SAP and reset the application.

The arrow in the upper left corner will take the user back to the menu.

Technical Information

This lists the tables used for validations, searches and defaults by prompt.

Prompt	Table
Res	RESB
Mat	BAPI_MATERIAL_GET_DETAIL / BAPI_MATERIAL_GETLIST / MARA / MARC
Locn	(from Reservation)
Bin	LAGP
Type	LAGP
Batch	MCHB / LQUA
Qty	NA
Serial	EQUI / JEST
App Update	BAPI_GOODSMVT_CREATE

