

SAP INVENTORY MANAGEMENT – ISSUE TO COST CENTER

This application issues material from inventory to a Cost Center.

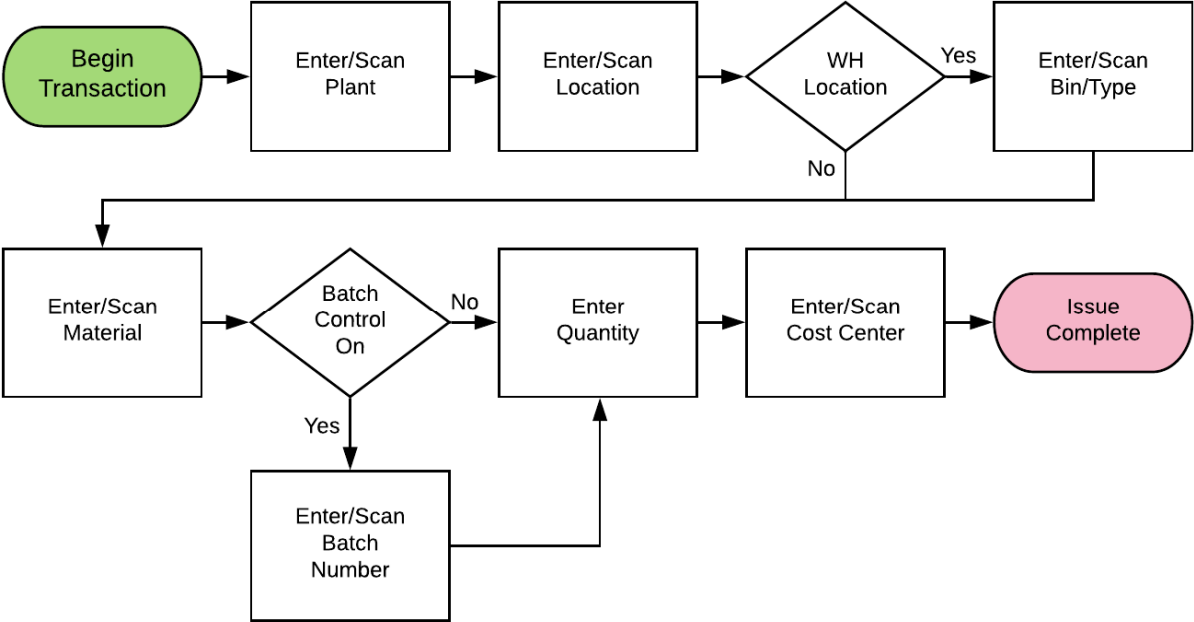
RFgen Functional Documentation

2019

RFgen provides its customers SAP-validated, ready-to-use suites of “Open Source” applications and a development environment that can be used to create new apps or to modify existing apps.

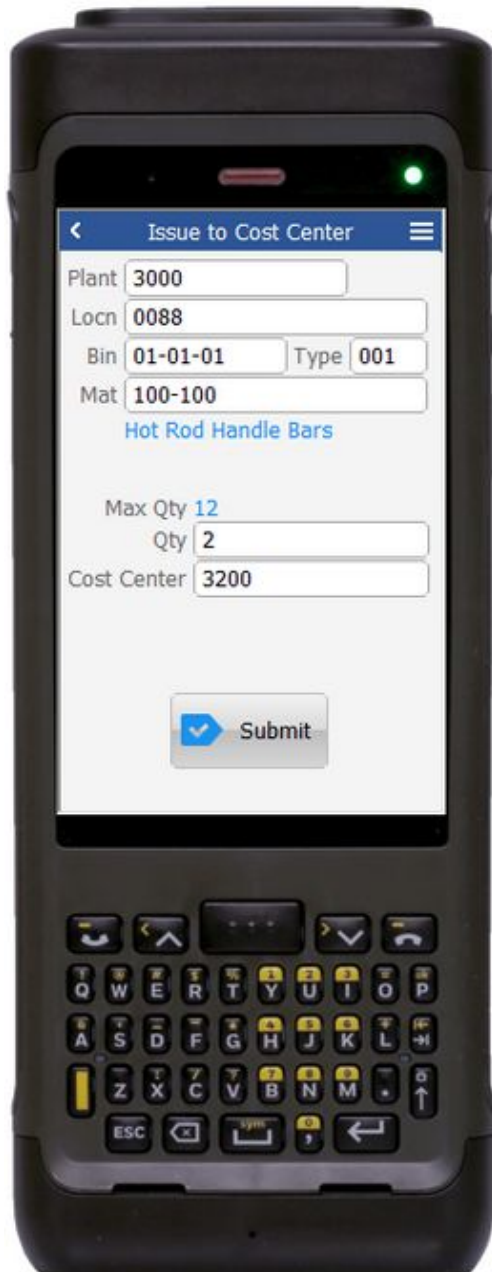
This document describes the business workflow and technical information used in this application.

SAP: Inventory Management (IM) – Issue to Cost Center



FIMII0200 IM – Issue to Cost Center

This application issues a material from inventory to a Cost Center.



Description of Workflow

First the user will scan, enter, or search for a plant value.

The user scans, enters, or searches for a location where the material exists. If the location is a warehouse-controlled location the Bin and Type fields will appear.

The user scans, enters, or searches for a Bin number that is assigned to the material specified.

If there is more than one Type associated with that bin, the user will be prompted to pick one from a list.

The user then scans, enters, or searches for a material. To search for a material, the first one or more characters must be entered to reduce the search list results. The material's description will be displayed.

If the material is Batch-controlled, the Batch field will be visible. If the material is serial-controlled, the Serial field will be visible.

The user scans, enters, or searches for a batch number that is assigned to the material specified. The maximum quantity available of the material is shown.

The user enters the quantity they wish to issue.



If entering serial numbers, the Serial field will continue to have focus until the count of serial number is equal to the quantity entered in the Quantity field.

The user scans, enters, or searches for a Cost Center. After validation the Submit button appears.

The **Submit** button will post the issue of this material to SAP and reset the application.

The arrow in the upper left corner will take the user back to the menu.

Technical Information

This lists the tables used for validations, searches and defaults by prompt.

Prompt	Table	Description
Plant	T001W	User Property "PLANT"
Locn	T320 / T001L	NA
Bin	LAGP	NA
Type	LAGP	NA
Mat	BAPI_MATERIAL_GET_DETAIL / BAPI_MATERIAL_GETLIST / MARA / MARC / MARD / MCHB / MSPR / MSKA / LQUA	NA
Batch	MCHB / LQUA / MARD / MSPR / MSKA	NA
Qty		NA
Serial	EQUI / JEST	NA
Cost Center	BAPI_COSTCENTER_GETLIST	NA
App Update	BAPI_GOODSMVT_CREATE	NA

