

SAP

INVENTORY MANAGEMENT – DIRECT ISSUE TO GENERAL LEDGER (GL) ACCOUNT

This application will perform a Direct Issue or a Return to Stock based on a menu selection.

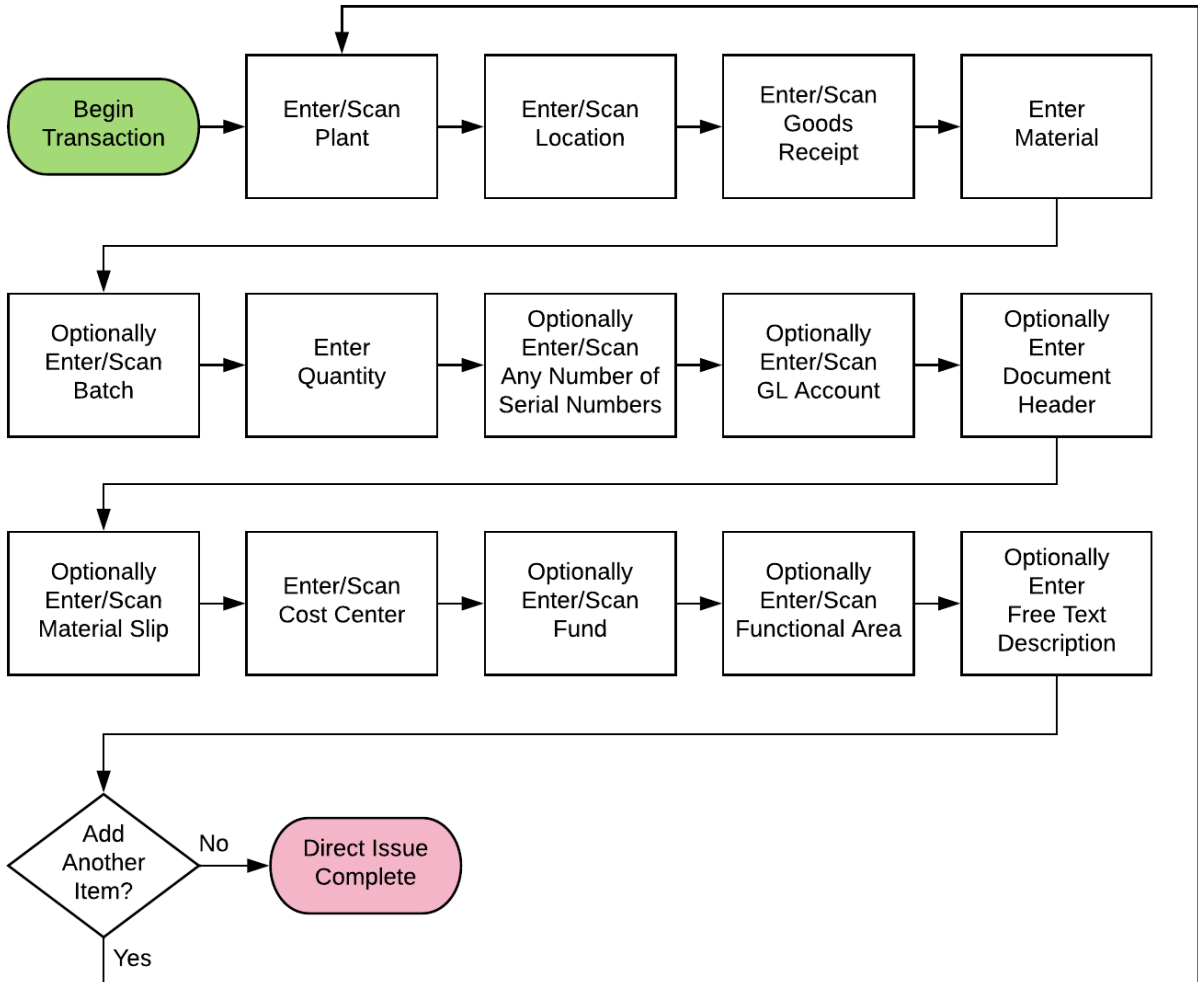
RFgen Functional Documentation

2019

RFgen provides its customers SAP-validated, ready-to-use suites of “Open Source” applications and a development environment that can be used to create new apps or to modify existing apps.

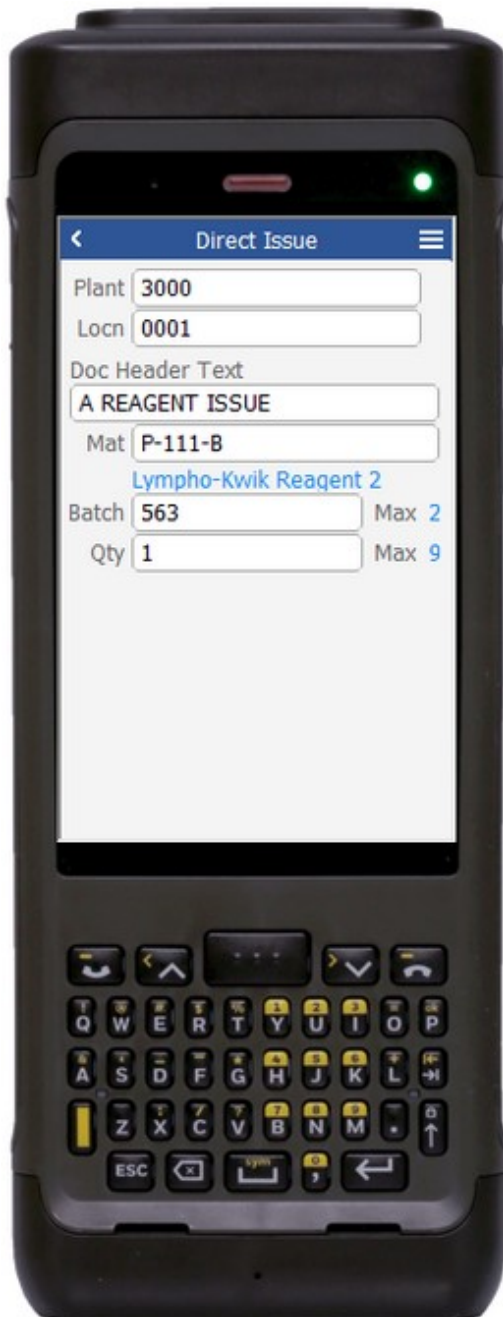
This document describes the business workflow and technical information used in this application.

SAP: Inventory Management (IM) – Direct Issue



FIMII0220 IM – Direct Issue (Serial/Batch)

This application will perform a Direct Issue or a Return to Stock based on a menu selection.



Description of Workflow

First the user will scan, enter, or search for a plant if one does not default from the user profile.

The user will scan, enter, or search for a location to issue a material from (or return material to) if one does not default from the user profile.

The user may optionally enter some text that will display in SAP as header information. This field is not required.

The user then scans, enters, or searches for a material. To search for a material, the first one or more characters must be entered to reduce the search list results. The material's description will be displayed.

If the material is Batch-controlled, the Batch field will be visible. If the material is serial-controlled, the Serial field will be visible.

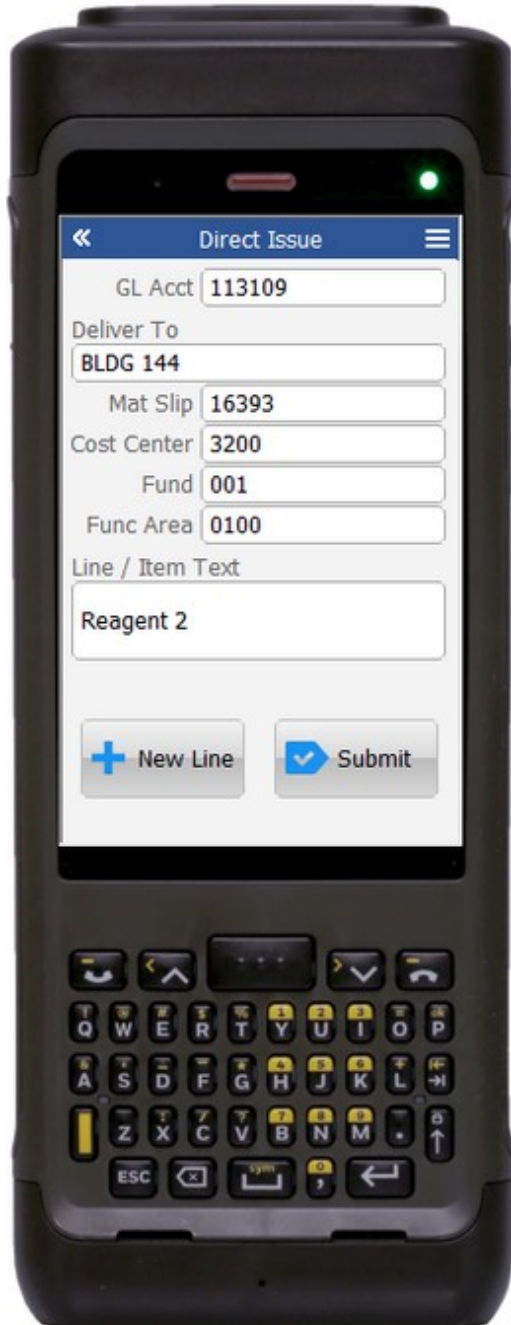
The user scans, enters, or searches for a batch number that is assigned to the material specified. The maximum quantity available of the material for that batch is shown.

The user enters the quantity they wish to issue. The maximum quantity available of the material not considering a batch value is displayed next to



the Quantity field for reference in case a different batch should be selected.

If entering serial numbers, the Serial field will continue to have focus until the count of serial number is equal to the quantity entered in the Quantity field. If the user wants to stop entering serial number before the full issue quantity, they may click the No More Serials button which will adjust the total quantity being issued and take the user to the next page.



The user scans or enters the GL Account, Deliver To Address, and the Material Slip number.

The user scans, enters, or searches for the Cost Center, Fund, and Functional Area values.

The optional Line / Item text is free text entry that will be saved as part of the line.

The user can click the **New Line** button to reset the form, set the focus on Material on page 1 and accumulate the entered values.

When the user clicks the **Submit** button, all accumulated lines are submitted to SAP at once for a single Material Document number.

The arrow in the upper left corner of page 1 will take the user back to the menu.

The double arrows in the top left corner of page 2 have been disabled.

The user should not be going back to page 1 while completing the line.



Technical Information

This lists the tables used for validations, searches and defaults by prompt.

Prompt	Table	Description
Plant	T001W	User Property "PLANT"
Locn	T320 / T001L	User Property "ISSUELOCN"
Doc Header Text	NA	NA
Mat	BAPI_MATERIAL_GET_DETAIL / BAPI_MATERIAL_GETLIST / MARD / MCHB / MSPR / MSKA / LQUA / MARA / MARC	NA
Batch	MCHB / LQUA	NA
Qty		NA
Serials	EQUI / JEST	NA
GL Acct	NA	NA
Deliver To	NA	NA
Mat Slip	NA	NA
Cost Center	BAPI_COSTCENTER_GETLIST	NA
Fund	FMFINT	NA
Func Area	TFKBT	NA
Line Text		NA
App Update	BAPI_GOODSMVT_CREATE	NA

