

DataMAX Software Group, Inc.  
El Dorado Hills, CA  
USA

# Oracle JD Edwards INVENTORY MANAGEMENT CYCLE COUNT BY ITEM

This application enables you to count inventory for a specific cycle using the item number of a location within a warehouse. Cycle counts are updated with the information entered upon the completion of this transaction.

---

RFgen Functional Documentation  
2019

RFgen provides its customers Oracle-validated, ready-to-use suites of Open Source applications and a development environment that can be used to create new apps or to modify existing apps.

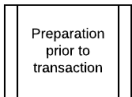
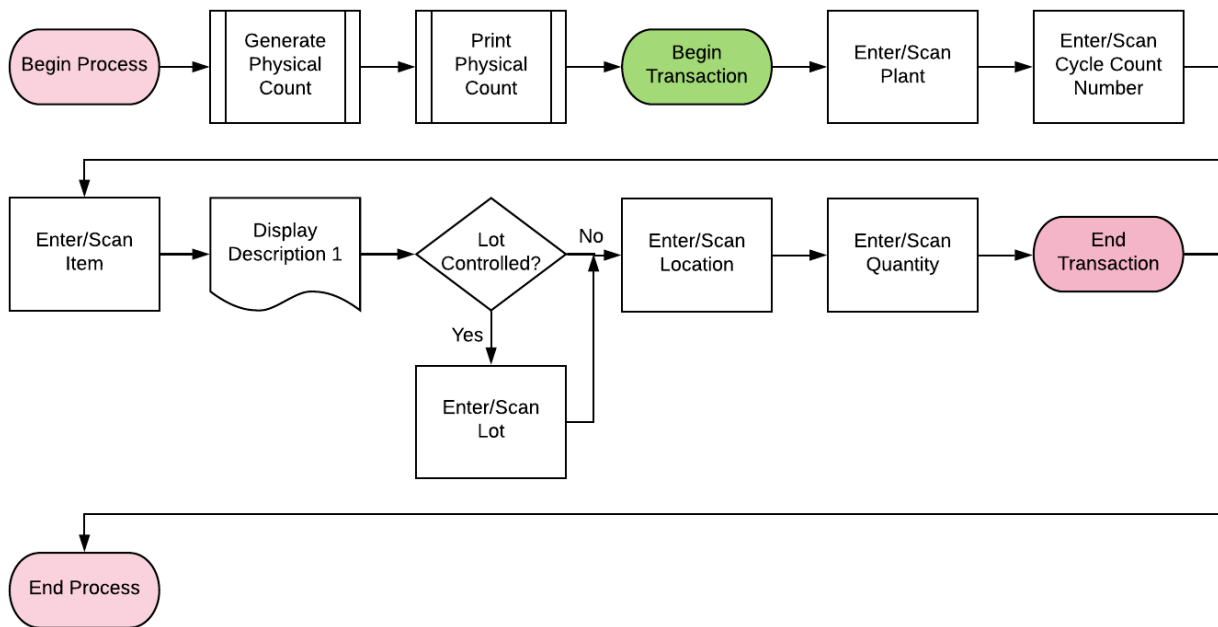
This document describes the business workflow and technical information used in this application.

**ORACLE**  
Validated Integration  
JD Edwards World

**ORACLE**  
Validated Integration  
JD Edwards  
EnterpriseOne

**RFgen**

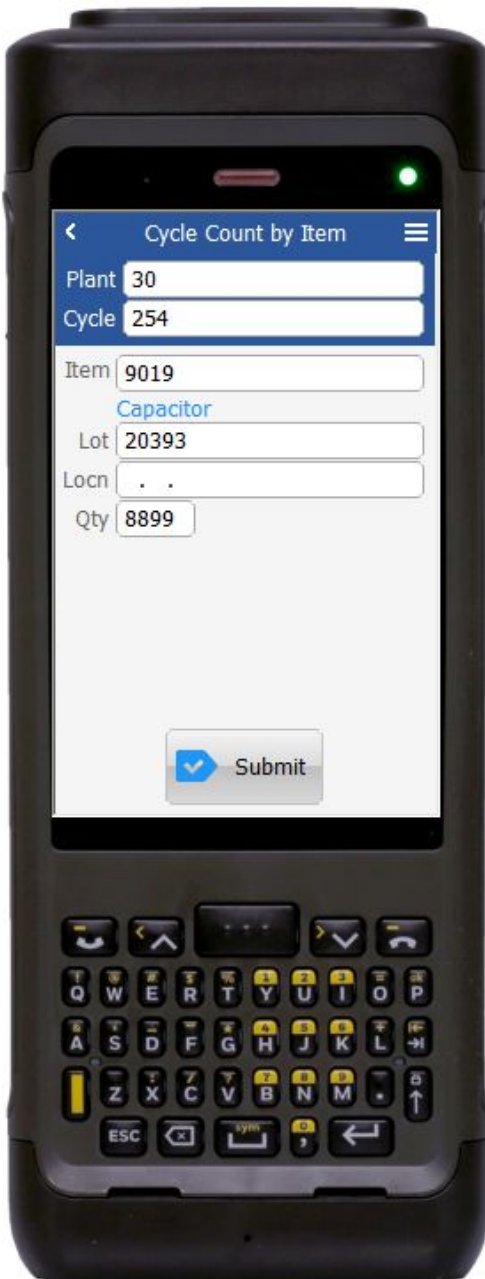
## JD Edwards IM Cycle Count By Item Workflow



Note: This process may require a print out of the inventory to be counted before you use the RFgen transaction to conduct a cycle count.



## FIMCC0100 – IM Cycle Count By Item



First the user scans, enters, or searches for a **Plant** value if one is not defaulted from the user's profile.

Secondly, the user scans, enters, or searches and selects the **Cycle** count number that has been generated by JDE before this transaction.

Thirdly, the user scans, enters or searches and selects the **Item** number.

In the search screen, all items existing in all locations for this specific cycle count are listed. The user selects the item. Upon selection, the item description will display below the Item field.

If the item is lot controlled, the **Lot** field appears.

The user enters or searches and selects the lot number.

The user scans, enters or searches and selects the warehouse **Locn**.

The user enters the quantity in the **Qty** field after completing the physical count.

Finally, the user clicks the **Submit** button to send this transaction to JDE at which time the form will reset by clearing all fields.

The arrow in the upper left corner, when clicked on, will take the user back to the menu.

**Note** the RFgen application presented in this document is based on JDE Interactive Application version ZJDE0001. Your display of the same application may look different due to the JDE version and settings in your environment.



## Technical Information

This lists the Tables and Fields (Columns) accessed by each prompt.

Prompt	Table	Description
Plant	F41001, F0006	Inventory Constants, Business Unit Master
Cycle	F4140	Cycle Count Header File
Item	F4141	Cycle Count Transaction File
Lot	F4141	Cycle Count Transaction File
Location	F4141	Cycle Count Transaction File
Qty		

## Customization Considerations

If you are planning on creating a new version of this application or modifying it for a customer, consider asking these questions to help prepare your list of customization requirements.

1. What EnterpriseOne version is used to process the Cycle Count transaction?
2. What processing options have been set to process Cycle Counts?
3. Is the Plant Branch default based on the user?
4. Will you allow a count of 0?
5. Is a prompt needed indicating that the Cycle Count has a variance from the current quantity on hand?

