

SAP INVENTORY MANAGEMENT – CYCLE COUNT

This application helps make cycle counts more efficient by updating SAP with a tally of the lines on an Inventory Document.

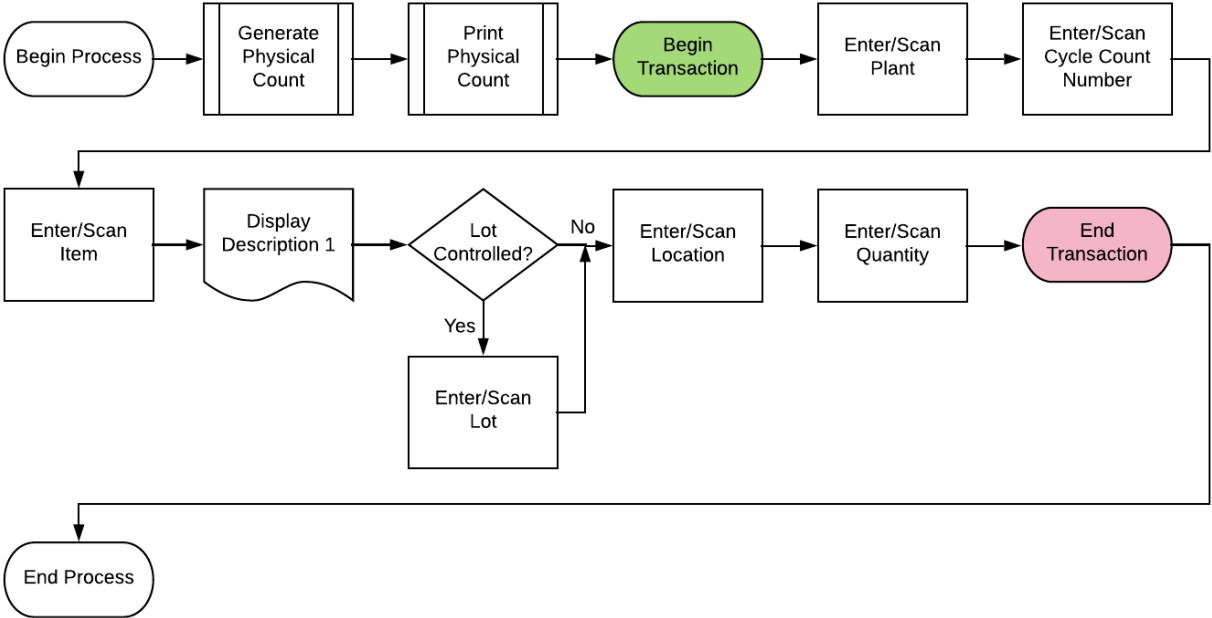
RFgen Functional Documentation

2019

RFgen provides its customers SAP-validated, ready-to-use suites of “Open Source” applications and a development environment that can be used to create new apps or to modify existing apps.

This document describes the business workflow and technical information used in this application.

SAP: Inventory Management (IM) – Cycle Count



FIMCC0200 – Cycle Count



This application is used to update SAP with the count of a line on an Inventory Document.

Description of Workflow

First the user scans, enters, or searches for an Inventory Document number. The document will default the Plant for which the document was created.

The user scans or enters the location.

Ideally, the user scans this value to prove they are standing in the correct place. The location entered must exist on the document.

The user scans, enters, or searches for a material. Again, this should be a scan to prove which item is being counted. The material must exist on the Inventory Document and in the specified location.

The material's description will be displayed. If the material is Batch-controlled, the Batch field will be visible.

If the material is serial-controlled the Serial field will be visible.

The user scans, enters, or searches for a batch number that is assigned to the material specified.

The user enters the count quantity.

If the material is serial-controlled, the Serial field is scanned or entered by the user.



A counter to the right of the Serial field will count how many serial scans have taken place. Once the full quantity of serials has been entered, the user taps on the **No More Serials** button to continue, and the application will display the **Submit** button.

The **Submit** button will post the count of this material to SAP and reset back to the Material field.

The arrow in the upper left corner will take the user back to the menu.

Technical Information

This lists the tables used for validations, searches and defaults by prompt.

Prompt	Table	Description
Inv Doc	BAPI_MATPHYSINV_GETLIST	User Property "PLANT"
Locn	Must exist on the document	NA
Mat	BAPI_MATERIAL_GET_DETAIL	NA
Batch	Must exist on the document	NA
Qty		NA
Serials	EQUI / JEST	NA
App Update	BAPI_MATPHYSINV_COUNT BAPI_MATPHYSINV_CHANGECOUNT	NA

Customization Considerations

If you are planning on creating a new version of this application or modifying it for a customer, consider asking these questions to help prepare your list of customization requirements.

1. What is your process if a material is not found? What do you do?
2. What is done if a material is found that doesn't exist on the document?
3. Do you use hard errors or soft warnings when a count is not expected?

