

Oracle E-Business Suite Inventory Management (IM) Account Alias Receipt

This application receives inventory items, increases on hand quantities, and updates the Account Alias account.

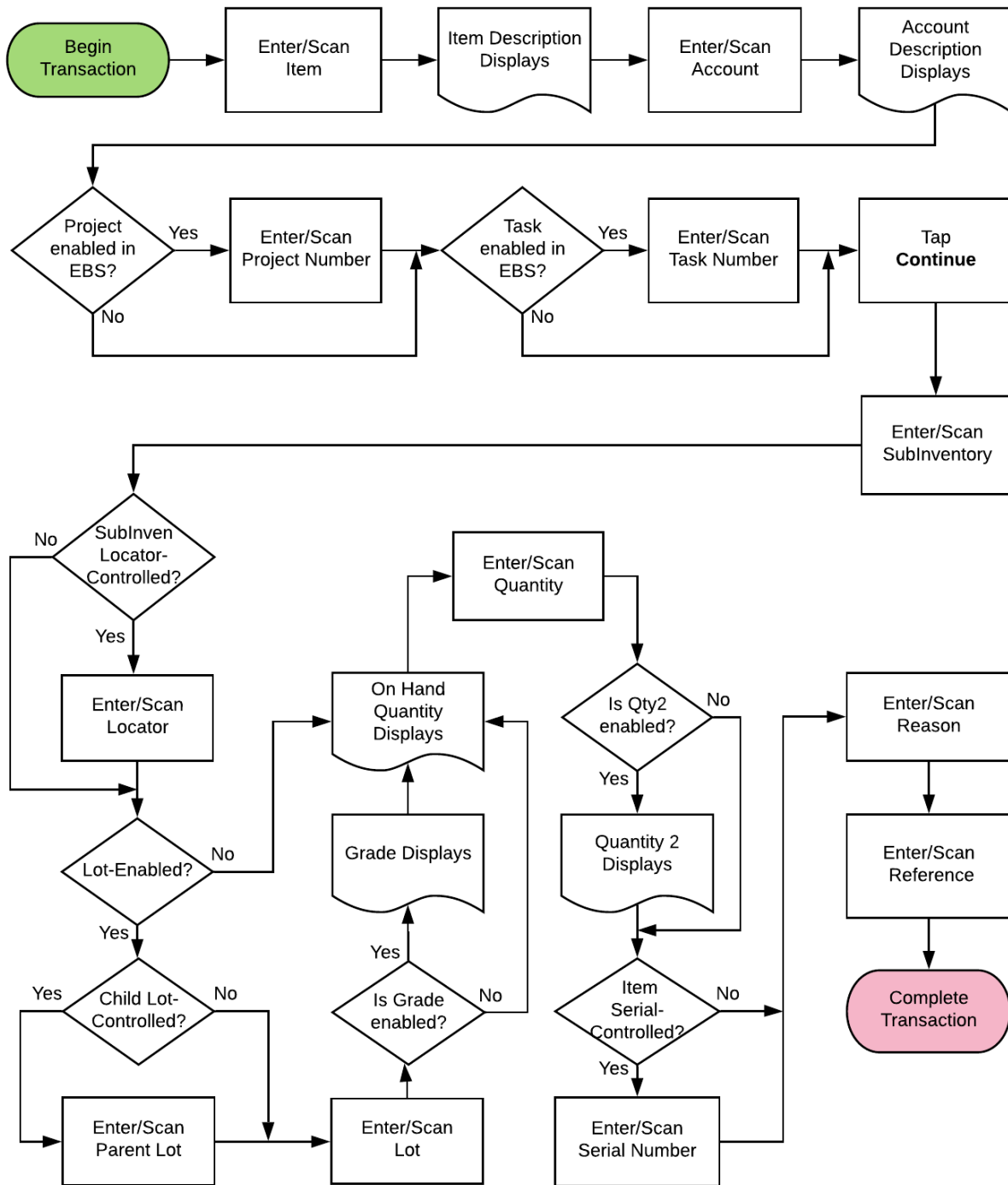


RFgen Functional Documentation 2019

RFgen provides its customers Oracle-validated, ready-to-use suites of “Open Source” applications and a development environment that can be used to create new apps or to modify existing apps.

In this document is a description of the application workflow details, technical information, and workflow analysis questions for planning customizations to this application.

Oracle EBS: IM – Account Alias Issue Workflow



FIMAR0302 IM – Account Alias Receipt

This application receives inventory items, increases on hand quantities, and updates the Account Alias account.



Workflow Details (1 of 2)

The user scans, enters, or searches the inventory item.

The description of the item displays.

If the item is revision-controlled, the user will enter, scan, or, search and select the revision.

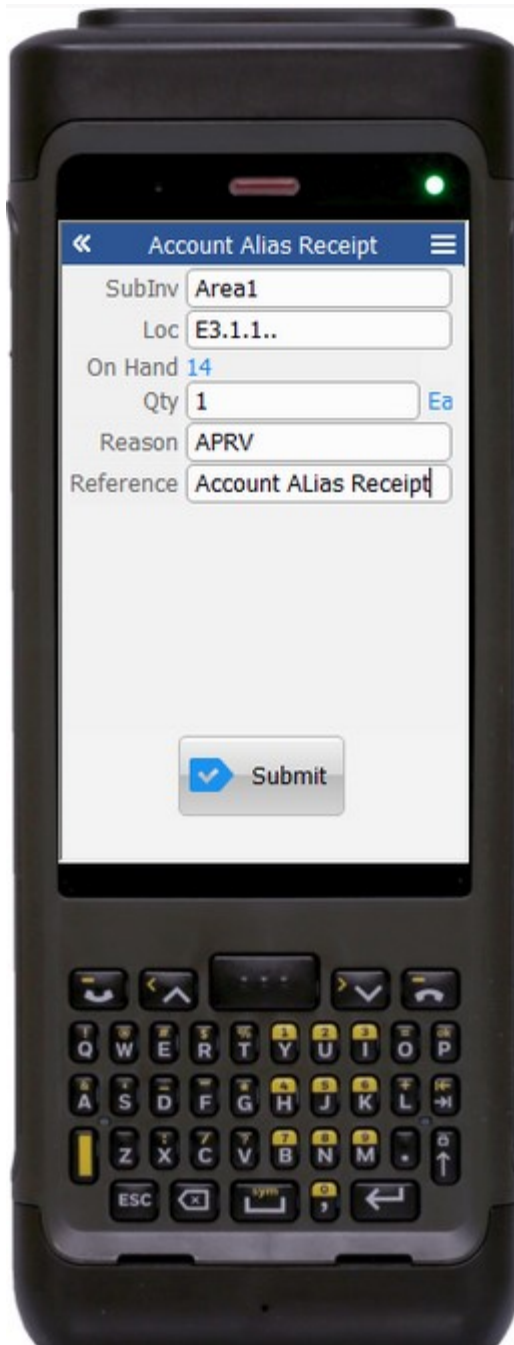
Next the user scans, enters, or searches for the account.

The account description displays.

If the inventory org is project-enabled, the user will enter, scan, or search and select the project and task.

The user taps the **Continue** button which takes the user to Page 2.

The arrow in the top left corner takes the user back to the menu.



Workflow Details (2 of 2)

On page 2, the user enters more Account Alias Receipt transaction details.

The user scans, enters, or searches for the subinventory in SubInv field.

If the subinventory is locator-enabled then the Locator field displays.

The user scans, enters, or searches the locator (Loc).

If the item is child-lot enabled, the user scans, enters, or searches the parent lot.

If the item is lot-enabled the user will enter, scan, or search and select the lot.

If the item is lot-enabled and, if the lot is grade-enabled, the lot grade displays on the screen.

If enabled, the On Hand quantity displays for the selected item in the organization / Subinventory / Locator / Lot.

The user enters the quantity (Qty). Its unit of measure (UOM) displays.

If the item has a secondary UOM-enabled, the user scans, enters, or searches the Qty2 field. Its UOM will display.

If the item is serial-controlled, the user scans, enters, or searches for the available serials. A running counter for the serials will display.

Next, the user scans, enters, or searches the Reason.

Lastly, the user scans, enters, or searches the application reference in the Reference field.

The **Submit** Button sends the transaction to EBS.

The arrows in the top left corner takes the user back to page 1.



Technical Information

The following describes the tables used for validation, search lists, or functions for a given prompt in this application. If applicable, the default property is also included.

Prompt	Validation / Search – Tables / Functions
Item	mtl_system_items_b_kfv
Rev	mtl_item_revisions_b
Account	mtl_generic_dispositions
Project	pjm_projects_all_v
Task	pjm_tasks_mtl_v
SubInv	mtl_secondary_inventories, mtl_item_sub_inventories
Loc	mtl_item_locations_kfv, mtl_secondary_locators
Parent Lot	Mtl_lot_numbers
Lot	Mtl_lot_numbers, mtl_onhand_quantities_details
Grade	Mtl_lot_numbers
On Hand	mtl_onhand_quantities_detail
Serial	mtl_serial_numbers
Reason	mtl_transaction_reasons
Macro	TIMAI0302

Customization Considerations

If you are planning on creating a new version of this application or modifying it for a customer, the following questions should be considered before you start.

1. Are there serial-controlled items?
2. Are there lot-controlled items?
3. Are there child-enabled, lot-controlled items?
4. Are revision-controlled items?
5. Are there plants/warehouses that are project-enabled?
6. Is the grade is enabled for all items?

