

# Oracle E-Business Suite PO Receiving By Part

This application is developed for the Oracle Purchasing module of Oracle EBS. It receives purchase order (PO) items, inventory, and expense items, and allows you to receive for Direct, Standard and Inspection Required routing.

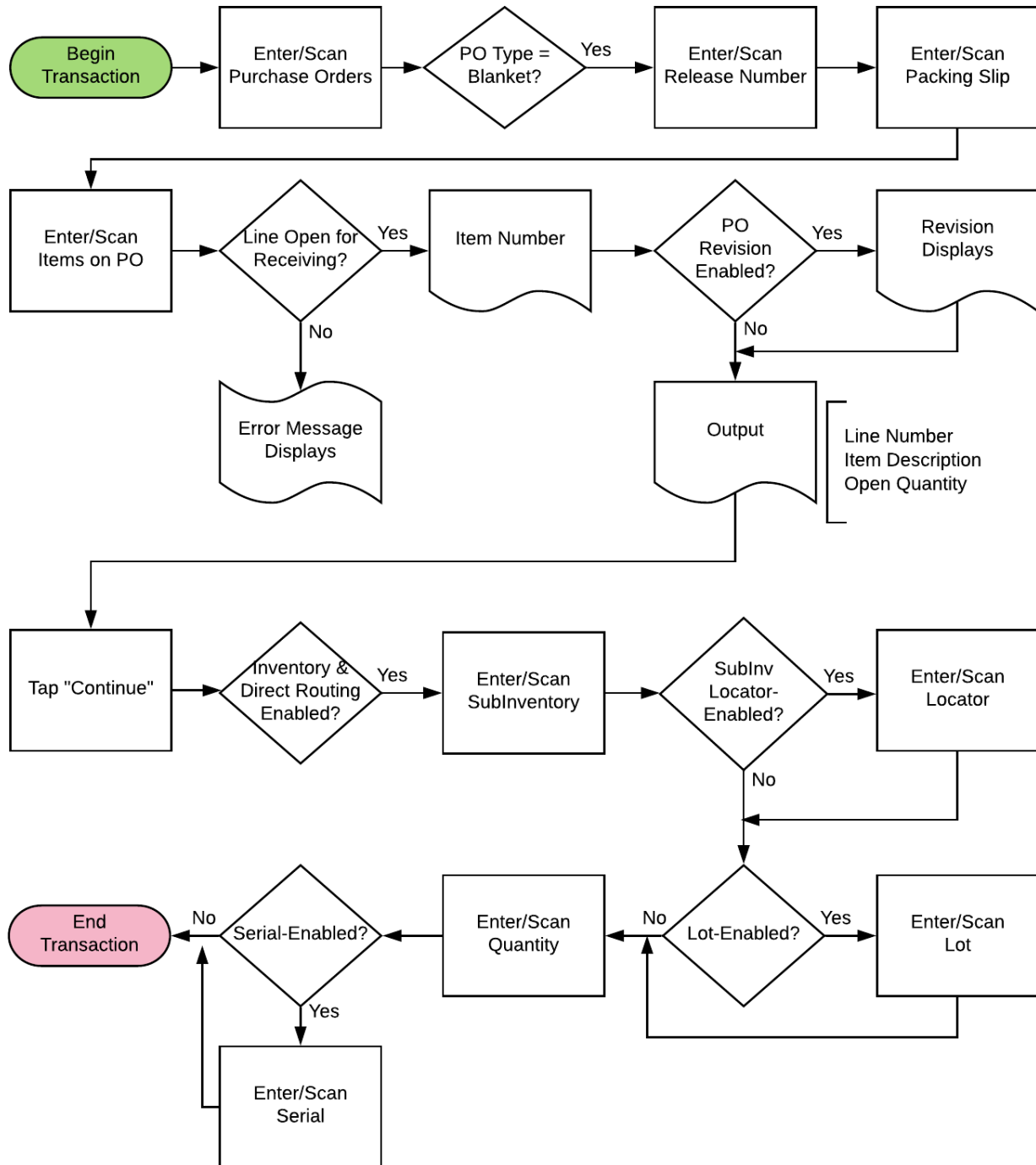


## RFgen Functional Documentation 2019

RFgen provides its customers Oracle-validated, ready-to-use suites of "Open Source" applications and a development environment that can be used to create new apps or to modify existing apps.

In this document is a description of the application workflow details, technical information, and workflow analysis questions for planning customizations to this application.

# Oracle EBS: PO – Purchase Order Receiving By Part Workflow



## FPORC0300 PO – Purchase Order Receiving By Part

This application is developed for Oracle Purchasing module of Oracle EBS. It receives purchase order (PO) items, inventory, and expense items, and allows you to receive for Direct, Standard and Inspection Required routing.



### Workflow Details (1 of 2)

First the user scans, enters, or searches for Purchase Orders.

If the purchase order is of type "Blanket," the user will be prompted to scan, enter, or search the release number.

The user enters the packing slip number.

The user can then select, scan or enter the items on the purchase order.

If the line is not open for receiving in purchase order, user will receive an error.

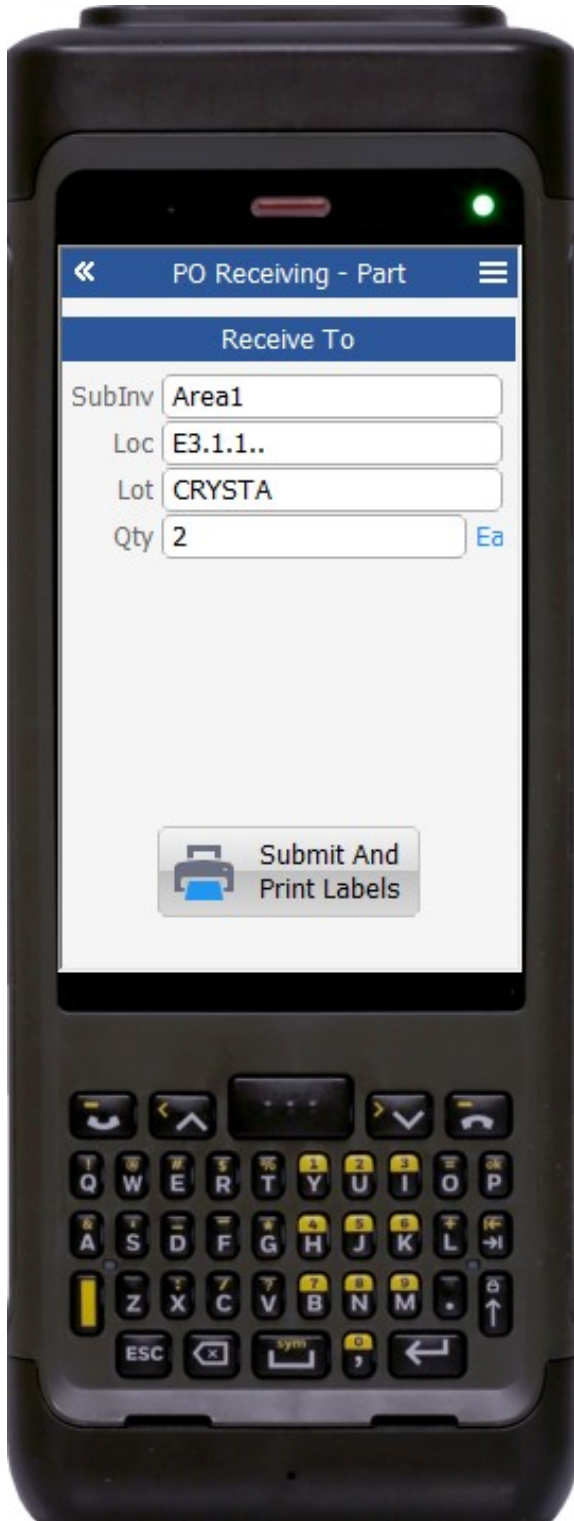
If the item was tied to a revision of purchase order, it will be defaulted on selecting the item number.

The item description, line number and quantity to receive will be defaulted on selecting the item number.

The user taps the **Continuation** button which takes the user to page 2.

The arrow in the upper left corner takes the user back to the menu.





## Workflow Details (2 of 2)

Page 2 displays the Receive To details for the PO, packing slip and item entered on page 1.

If the item is inventory-enabled and direct routing enabled, then the user will be prompted to enter, scan or search the subinventory.

Next if the subinventory is locator-enabled, then the user will search, scan or enter the locator.

If the item is lot-enabled, the user will be requested to enter the lot number.

Next, the user enters the quantity.

If the item is serial-enabled, then the user must enter the serial's equivalent to the quantity entered.

Finally, the user taps the **Submit** button.

The **Submit** button uploads the transaction to receive the item in the EBS system.

If a printer is setup, the **Submit And Print Labels** button uploads the transaction to receive the item and submits the labels to be printed.

The arrow in the upper left corner takes the user back the user back to the prior screen.

## Technical Information

The following describes the tables used for validation, search lists, or functions for a given prompt in this application.

Prompt	Validation / Search – Tables / Functions
Batch	gme_batch_header
Line	gme_material_details; gme_reservations_pvt.get_reserved_qty; mtl_system_items_kfv

## Customization Considerations

If you are planning on creating a new version of this application or modifying it for a customer, the following questions should be considered before you start.

- 1 Does the user want to see some other information related to the batch on the inquiry screen?

