

DataMAX Software Group, Inc.  
El Dorado Hills, CA 95762  
USA

# Oracle E-Business Suite PO InterOrg Receipt

This application is used to receive inter-organization shipments.

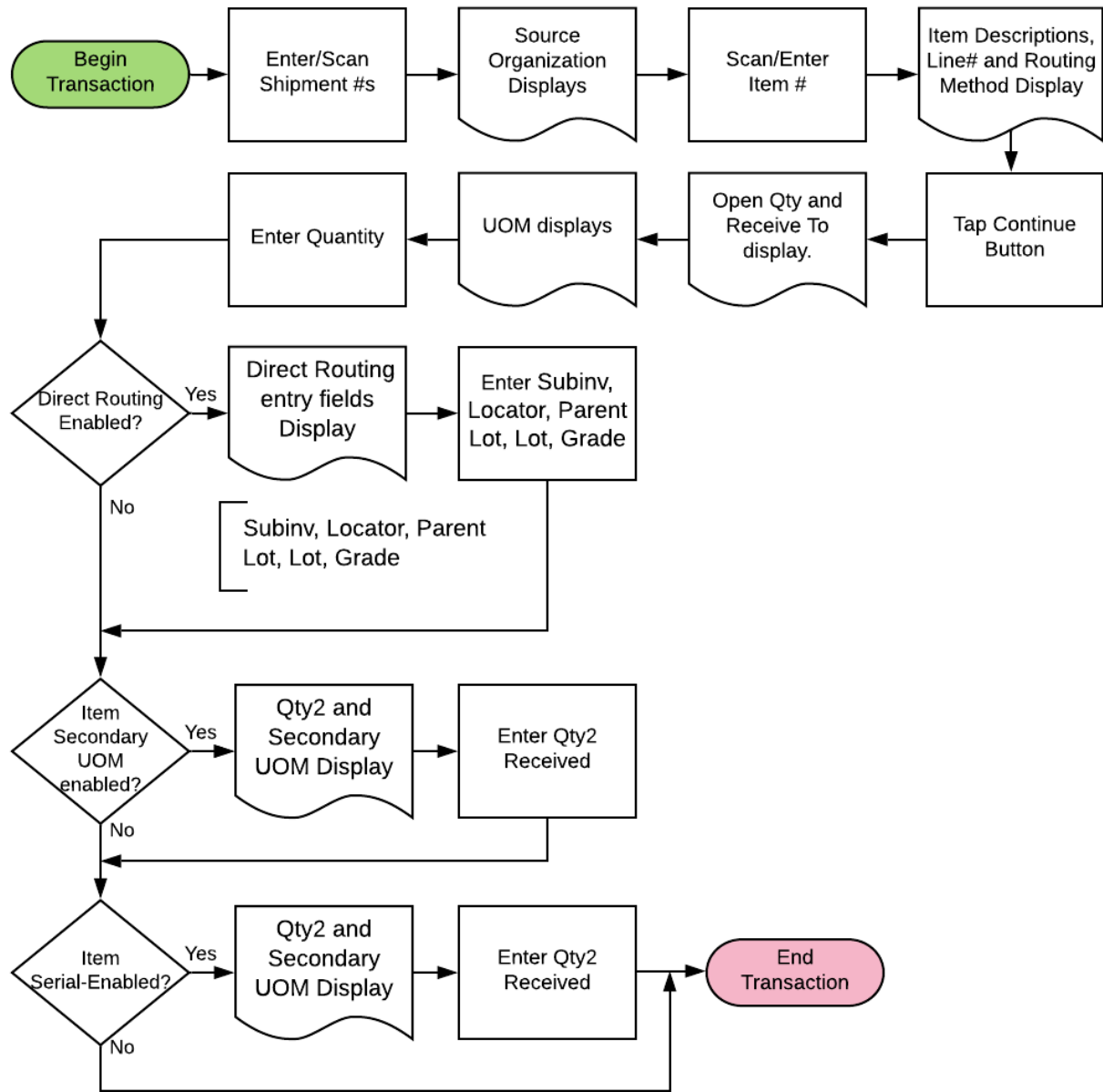


## RFgen Functional Documentation 2019

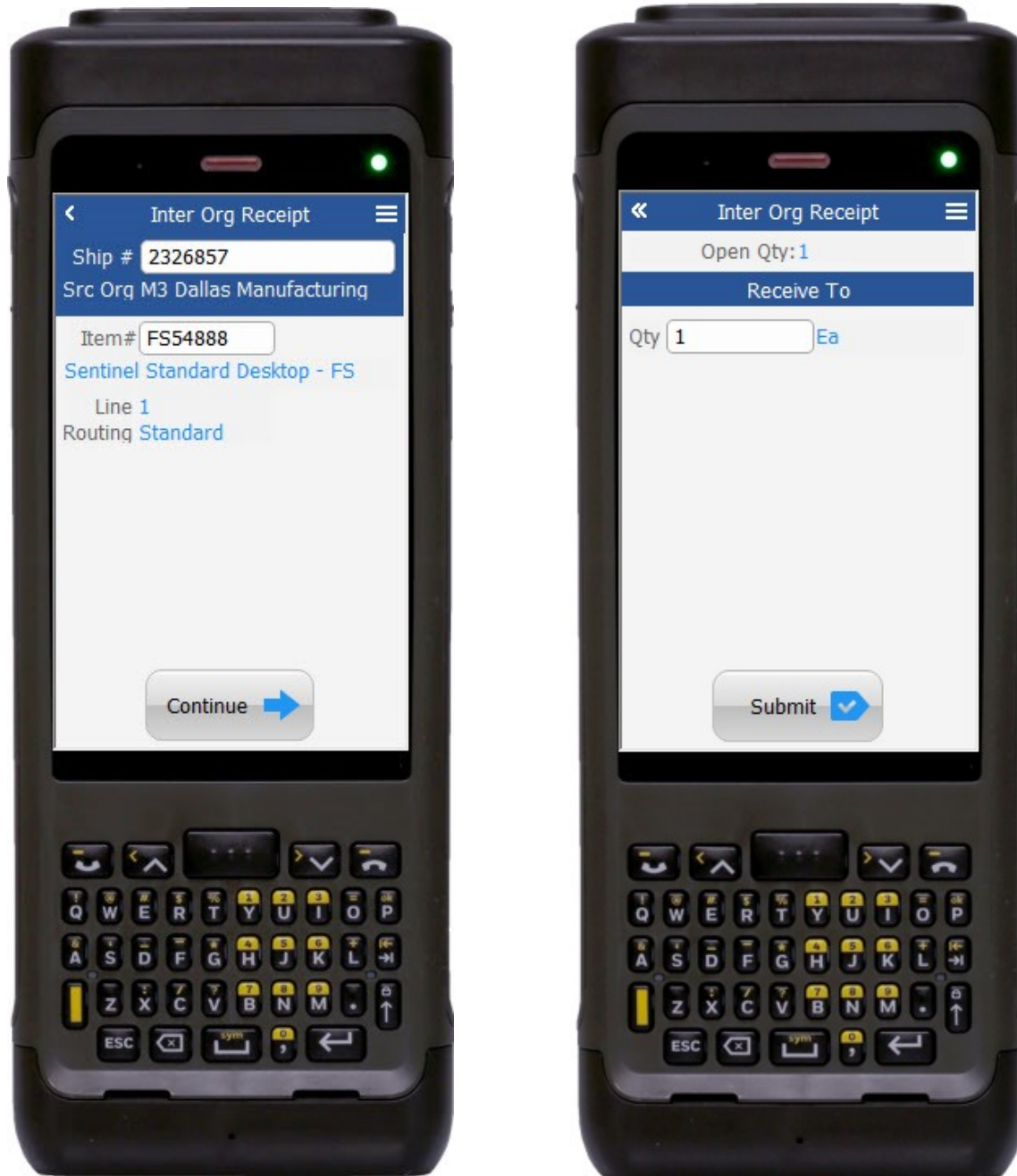
RFgen provides its customers Oracle-validated, ready-to-use suites of "Open Source" applications and a development environment that can be used to create new apps or to modify existing apps.

In this document is a description of the application workflow details, technical information, and workflow analysis questions for planning customizations to this application.

# Oracle EBS: PO InterOrg Receipt Workflow



## FPOIOR0300 - PO InterOrg Receipt



This application is used to receive inter-organization shipments.



## Workflow Details (1 of 2)

First the user scans, enters or searches the shipment number in Ship # field.

The Source Organization displays.

Next, the user enters, scans or searches the Item Number in the item field.

If the item is revision-controlled, the user will enter, scan, or search and select the version.

The item description, line number, routing method from the shipment line will display.

Next, the user taps the **Continue** button to receive the shipment line.

The arrow in the upper left corner takes the user back the user back to the prior screen.

## Workflow Details (2 of 2)

On page 2, the user enters the Open Quantity (Qty) to be received.

In the Receive To section, the Qty and the unit of measure (UOM) (defaulted from the primary UOM of the item) display.

If direct routing is enabled, then the user enters the data in the subinventory (Subinv), locator (Locn), Parent Lot, Lot, and Grade fields.

If a secondary quantity is enabled for the item, then the user enters the secondary quantity (Qty2). The UOM for the Qty2 displays automatically.

If the Item is serial enabled, the user enters the serial numbers for the quantity and the serial count will also display.

Lastly the user taps the **Submit** button to complete the transaction.

The double arrows in the upper left corner takes the user back the user back to the prior screen.



## Technical Information

The following describes the tables used for validation, search lists, or functions for a given prompt in this application.

<b>Prompt</b>	<b>Validation / Search – Tables / Functions</b>
Prompt	RCV_SHIPMENT_HEADERS, ORG_ORGAIZATION_DEFINITIONS
Ship#	ORG_ORGANIZATION_DEFINITIONS
Src Org	MTL_SYSTEM_ITEMS_B_KFV
Item#	RCV_SHIPMENT_LINES
Line	MTL_SHIPPING_NETWORKS_VIEW
Routing	RCV_SHIPMENT_LINES
Open Qty	MTL_SECONDARY_INVENTORIES, MTL_ITEM_SUB_INVENTORIES
SubInv	MTL_ITEM_LOCATIONS_KFV, MTL_SECONDARY_LOCATORS
Loc	MTL_LOT_NUMBERS
Parent Lot	MTL_LOT_NUMBERS, MTL_ONHAND_QUANTITIES_DETAIL
Lot	MTL_LOT_NUMBERS
Grade	MTL_SERIAL_NUMBERS
Serial	TPOR0300

<b>Prompt</b>	<b>Default Property / In-Code Defaults</b>
Macro	RCV_SHIPMENT_HEADERS, RCV_TRANSACTIONS_INTERFACE, MTL_TRANSACTION_LOTS_INTERFACE, RCV_LOTS_INTERFACE, RCV_SERIAL_NUMBERS_INTERFACE, RCV_SERIALS_INTERFACE, RCV_PARAMETERS, PO_HEADERS_ALL, RCV_SUPPLY, MTL_SYSTEM_ITEMS_B_KFV

## Customization Considerations

If you are planning on creating a new version of this application or modifying it for a customer, the following questions should be considered before you start.

- 1) Are there serial-controlled items?
- 2) Are there lot-controlled items?
- 3) Are there child-enabled, lot-controlled items?
- 4) Are revision-controlled items?
- 5) Are there plants/warehouses with project enabled?

