

Oracle E-Business Suite Inventory Management (IM) SubInventory Transfer

This application is used to transfer inventory to another location and update subinventory information.

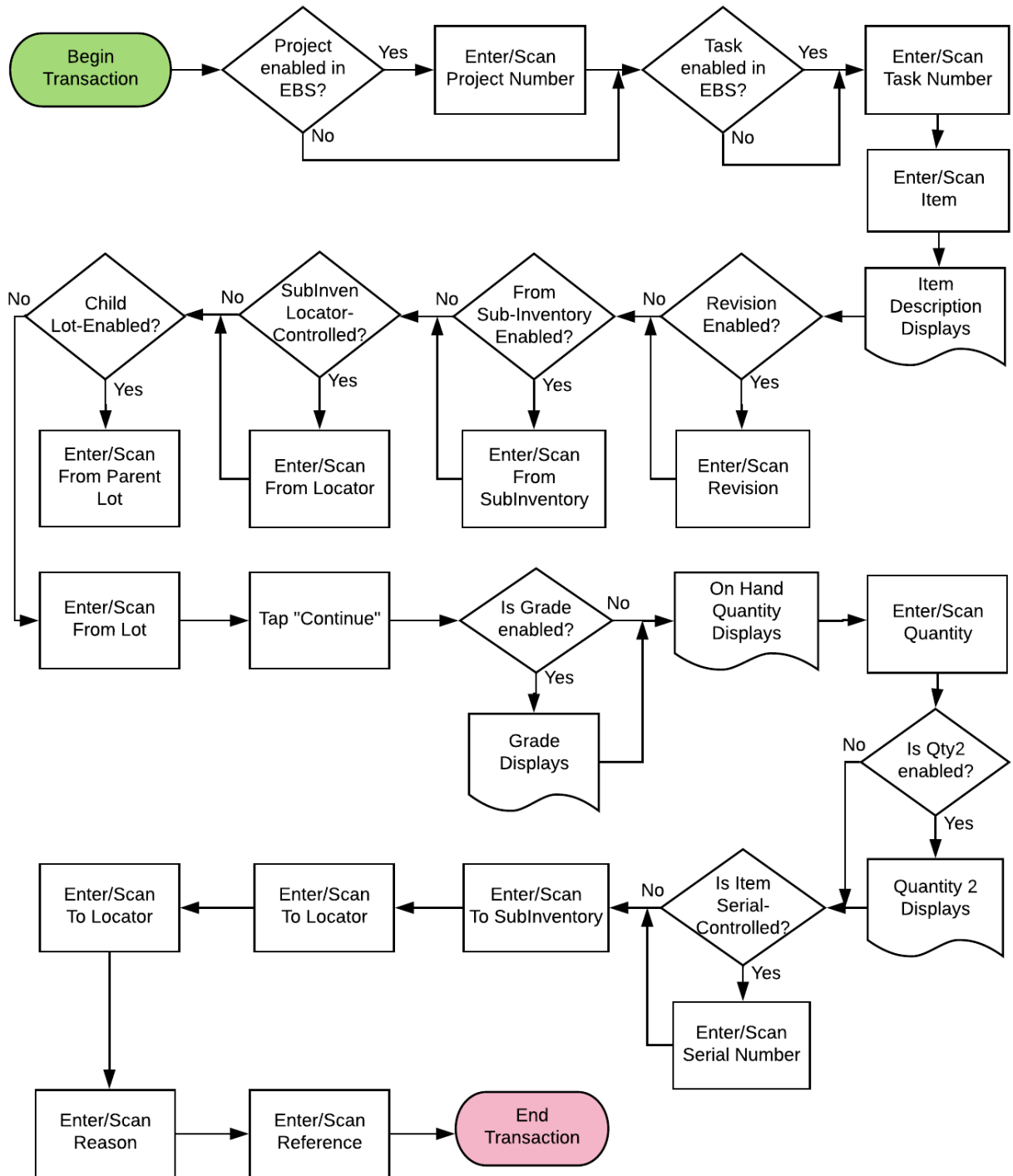


RFgen Functional Documentation 2019

RFgen provides its customers Oracle-validated, ready-to-use suites of "Open Source" applications and a development environment that can be used to create new apps or to modify existing apps.

In this document is a description of the application workflow details, technical information, and workflow analysis questions for planning customizations to this application.

Oracle EBS: IM – SubInventory Transfer Workflow



FIMIT0300 IM – SubInventory Transfer

This application transfers inventory to another location and update subinventory information.



Workflow Details (1 of 2)

If the inventory org is project-enabled, the user will enter, scan, or search and select the project and task.

If the inventory org is not project-enabled, the user scans, enters, or searches the inventory item (Item).

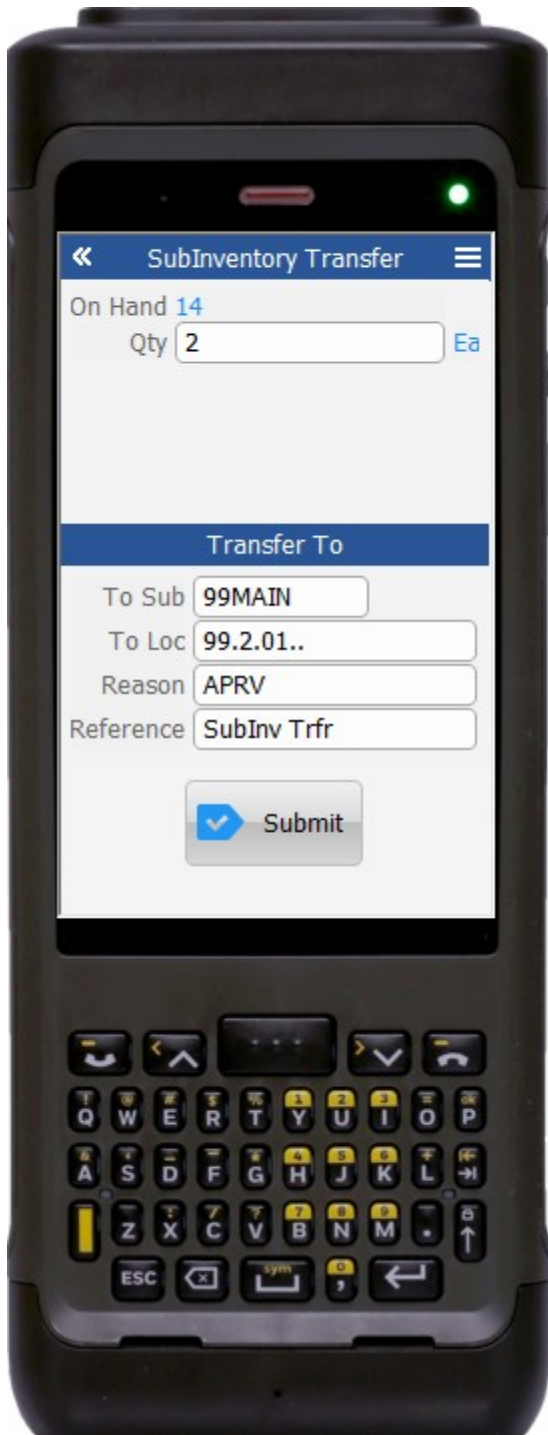
The description of the item displays.

If the item is revision-controlled, the user will enter, scan, or search and select the revision.

Next the user scans, enters, or searches for the source subinventory in the (Frm Sub) field.

The user taps the **Continue** button which takes the user to Page 2.

The arrow in the top left corner takes the user back to the menu.



Workflow Details (2 of 2)

On page 2, the user enters more SubInventory Transfer transaction details.

If the item is lot-controlled and, if the lot is grade-enabled, the lot grade displays on the screen.

If applicable, the On Hand quantity displays for the selected item in the organization / Subinventory / Locator / Lot.

The user enters the quantity (Qty) to be transferred. The unit of measure (UOM) displays.

If the item has a secondary UOM-enabled, the user scans, enters, or searches the Qty2 field. Its UOM will display.

If the item is serial-controlled, the user scans, enters, or searches for the available serials. A running counter for the serials will display.

The user scans, enters, or searches for the destination subinventory in the To Sub field.

The user scans, enters, or searches the destination locator in the To Loc field.

Next, the user scans, enters, or searches the Reason in the Reason field.

Lastly, the user scans, enters, or searches the application reference in the Reference field.

The **Submit** Button sends the transaction to EBS.

The arrows in the top left corner takes the user back to page 1.

Technical Information

The following describes the tables used for validation, search lists, or functions for a given prompt in this application.

Prompt	Validation / Search – Tables / Functions
Project	pjm_projects_all_v
Task	pjm_tasks_mtl_v
Item	mtl_system_items_b_kfv
Rev	mtl_item_revisions_b
Frm Sub	mtl_secondary_inventories, mtl_item_sub_inventories
Frm Loc	mtl_item_locations_kfv, mtl_secondary_locators
Parent Lot	Mtl_lot_numbers
Lot	Mtl_lot_numbers, mtl_onhand_quantities_details
Grade	Mtl_lot_numbers
On Hand	mtl_onhand_quantities_detail
Serial	mtl_serial_numbers
To Sub	mtl_secondary_inventories, mtl_item_sub_inventories
To Loc	mtl_item_locations_kfv, mtl_secondary_locators
Reason	mtl_transaction_reasons
Macro	TIMIT0300

Customization Considerations

If you are planning on creating a new version of this application or modifying it for a customer, the following questions should be considered before you start.

1. Are there serial-controlled items?
2. Are there lot-controlled items?
3. Are there child-enabled, lot-controlled items?
4. Are revision-controlled items?
5. Are there plants/warehouses that are project-enabled?
6. Is the grade is enabled for all items?

