

Oracle E-Business Suite Inventory Management – Item Inquiry

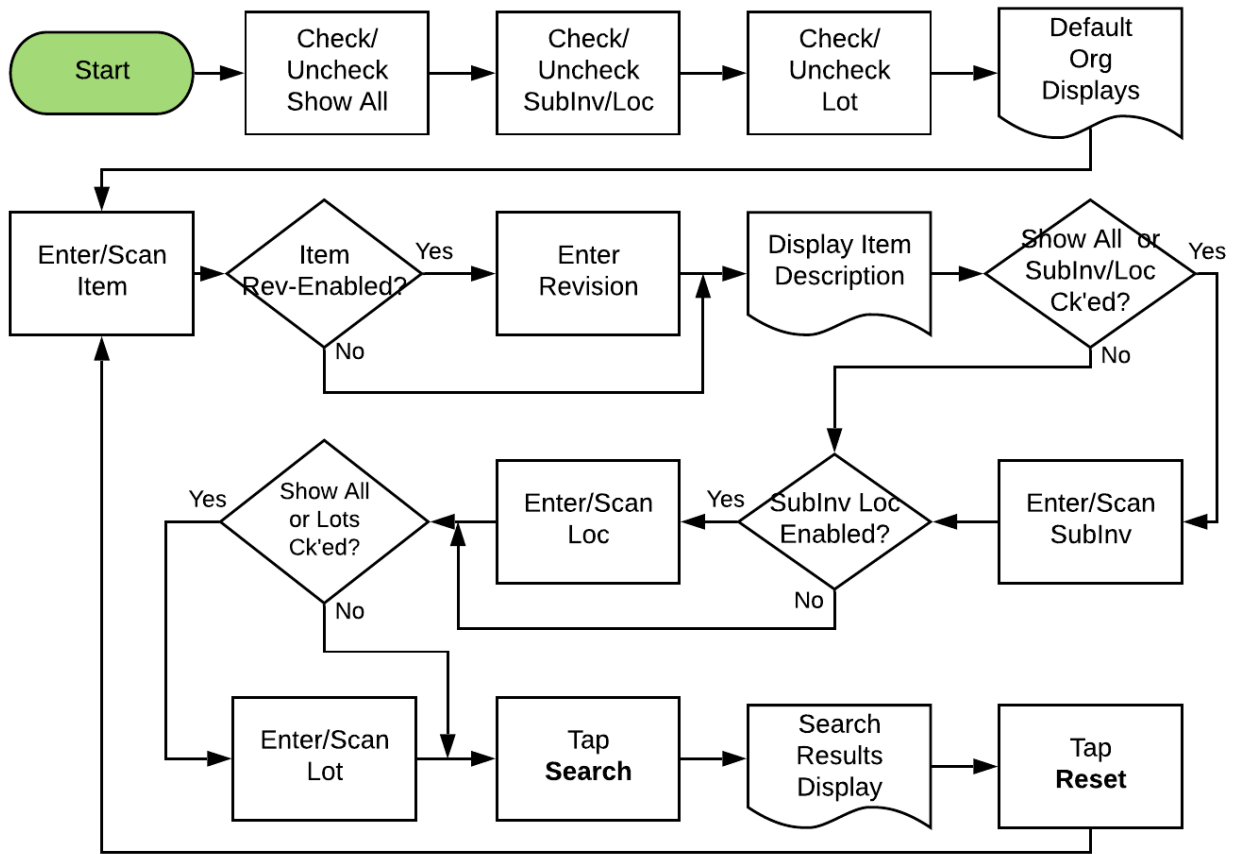
This application is used to check the available on-hand quantity of an item.

RFgen Functional Documentation 2019

RFgen provides its customers Oracle-validated, ready-to-use suites of “Open Source” applications and a development environment that can be used to create new apps or to modify existing apps.

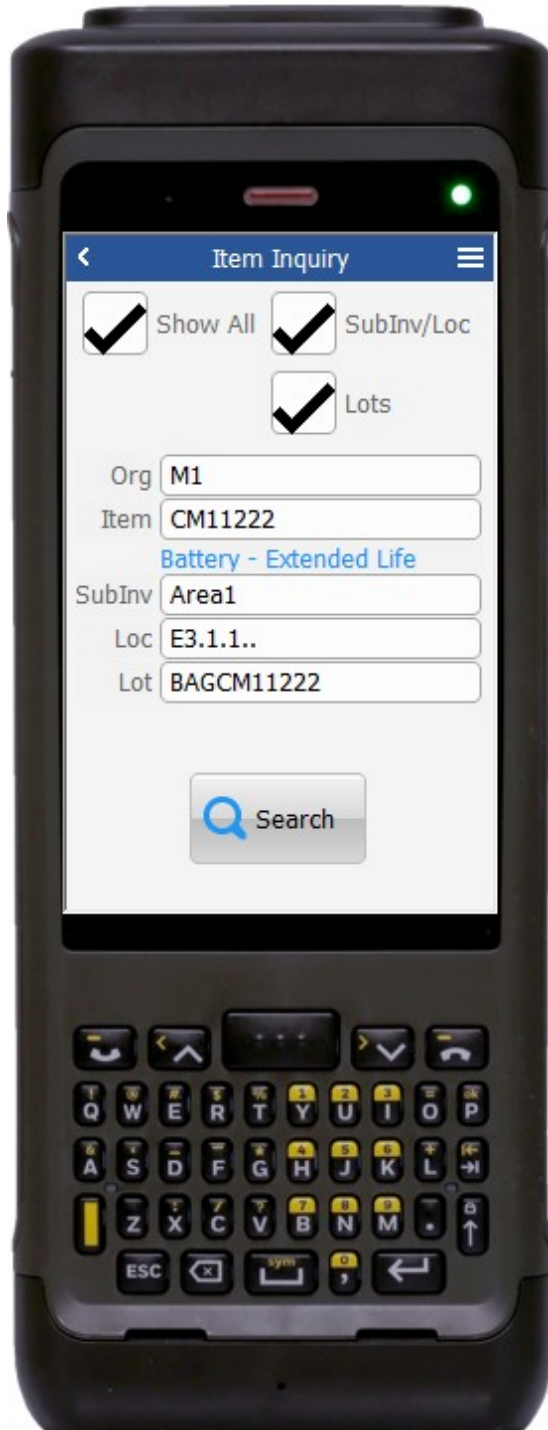
In this document is a description of the application workflow details, technical information, and workflow analysis questions for planning customizations to this application.

Oracle EBS: IM – Item Inquiry



FIMQI0301 IM – Item Inquiry

This application is used to check the available on-hand quantity of an item.



Workflow Details (1 of 2)

By default, Show All, SubInv/Loc, and Lots are checked. If Show All is checked, the user enters the sub-inventory, locator (if sub-inventory is locator-enabled), and locator number. Otherwise the user only enters field value(s) that was checked.

First, the user checks/unchecks the desired filter.

The inventory organization defaults automatically to the inventory organization associated with the user's login. The user can change the inventory-organization (Org) if desired.

Next, the user enters, scans, or searches the item. If the item is revision enabled, the user enters the revision.

The item description displays.

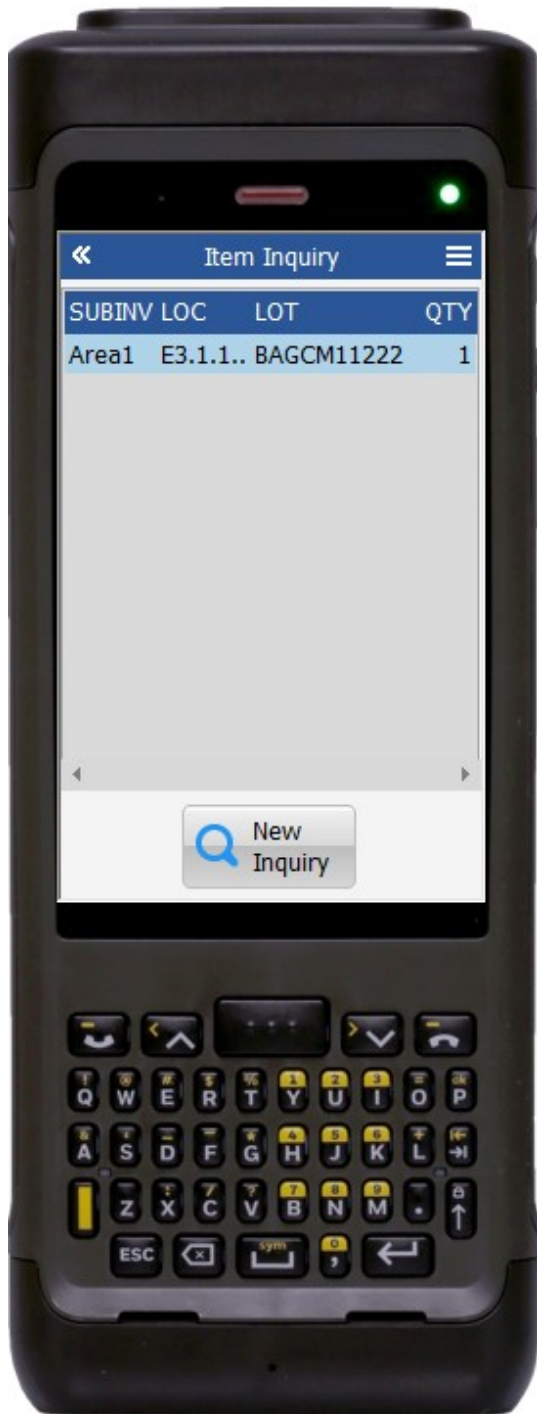
If the SubInv/Loc or the Show All checkbox is checked, then the SubInv field displays, and the user enters, scans, or searches the sub-inventory.

If the sub-inventory is locator enabled, then the Loc field displays, and the user enters, scans, or searches the locator number.

If Show All or Lot are checked, the Lot field displays and the user enters, scans, or searches the lot number. (The item must be lot-enabled in order for the user to enter, scan, or search the lot.)

The user taps the **Search** button which takes the user to page 2.

The arrow in the upper left corner takes the user back to the menu.



Workflow Details (2 of 2)

Page 2 displays item quantity against selected sub-inventory, locator and lot.

If the user taps the **New Inquiry** button, the user is returned to the item field on page 1 for a new search.

The double arrows in the upper left corner takes the user back to the prior page.

Technical Information

The following describes the tables used for validation, search lists, or functions for a given prompt in this application.

Prompt	Validation / Search – Tables / Functions
Org	org_organization_definitions
Item	mtl_system_items_kfv
Revision	mtl_item_revisions_b
Sub Inventory	mtl_parameters mtl_secondary_inventories mtl_item_sub_inventories
Locator	mtl_item_locations_kfv
Lot	mtl_lot_numbers

Customization Considerations

If you are planning on creating a new version of this application or modifying it for a customer, the following questions should be considered before you start.

1. Are there items that are revision enabled?
2. Are there items that are child lot/lot enabled?
3. Are the sub-inventories locator-enabled?
4. Are other search criteria required?
5. Are more columns required in the output?

