

DataMAX Software Group, Inc.
El Dorado Hills, CA
USA

Oracle E-Business Suite Inventory Management (IM) Inter-organization Transfer

This application is used to transfer inventory between two warehouses or plants in a company.



RFgen Functional Documentation 2019

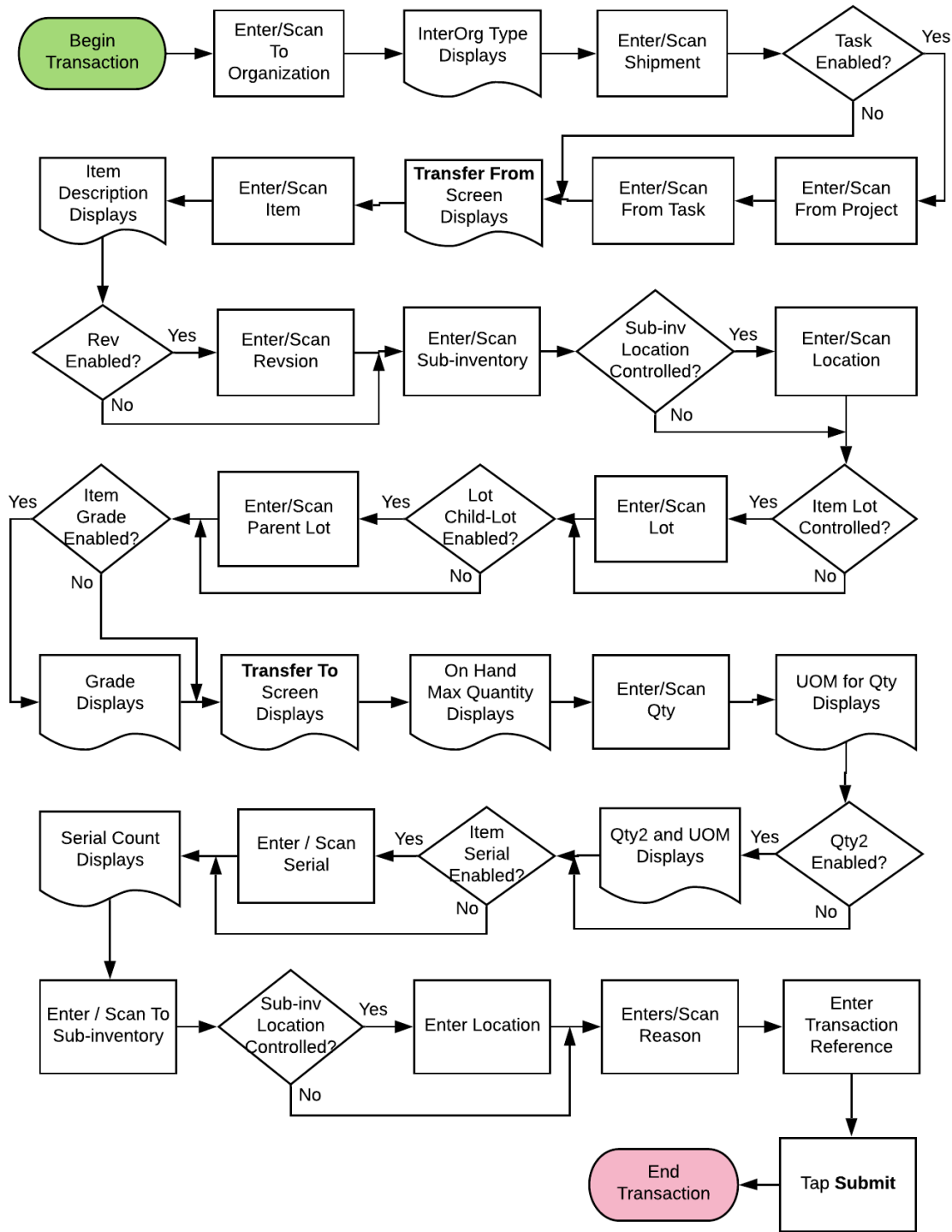
RFgen provides its customers Oracle-validated, ready-to-use suites of "Open Source" applications and a development environment that can be used to create new apps or to modify existing apps.

In this document is a description of the application workflow details, technical information, and workflow analysis questions for planning customizations to this application.

ORACLE
E-BUSINESS SUITE

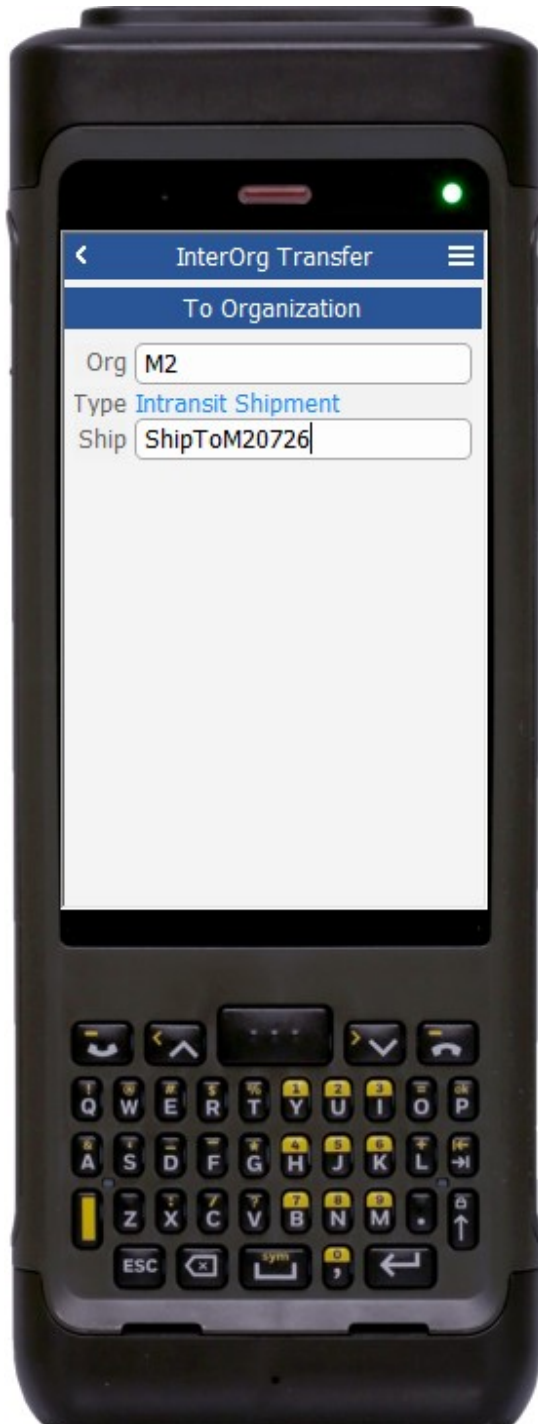
RFgen

Oracle EBS: IM – Inter-organization Transfer Workflow



FIMIT0302 IM – Inter-organization (InterOrg) Transfer

This application is used to transfer inventory between two warehouses or plants in a company.



Workflow Details (1 of 2)

To Organization

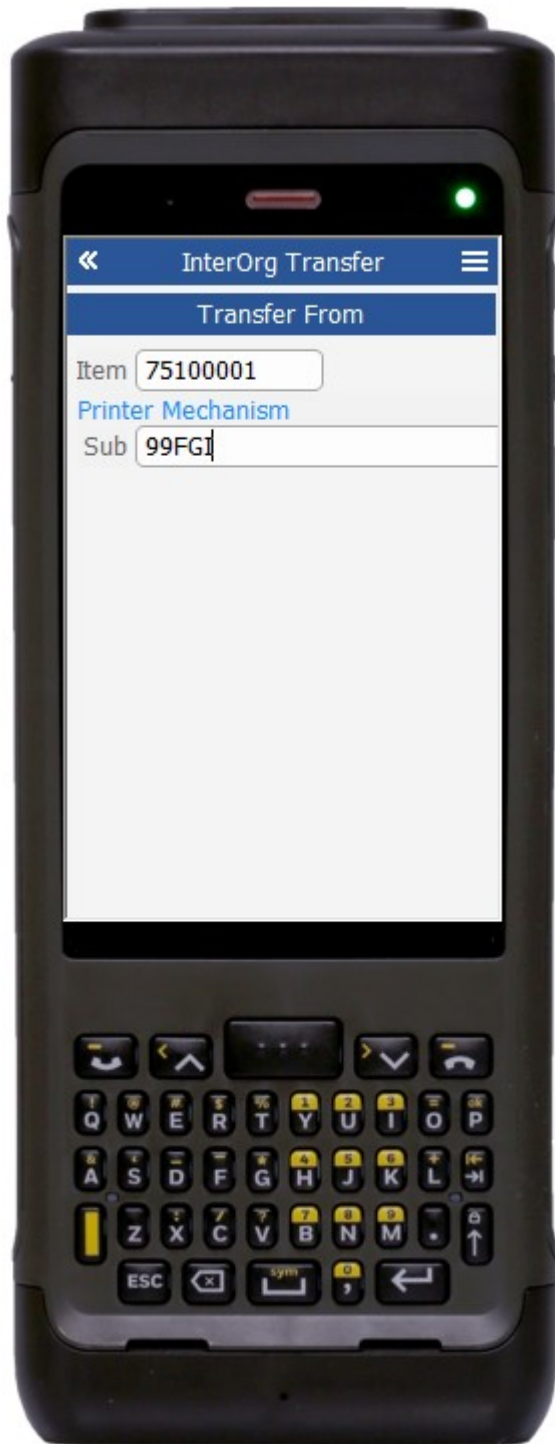
First, the user enters, scans or searches the destination organization code in the Org field.

The default type for the InterOrg Transfer displays in the Type field.

Next, the user enters, scans, or searches the shipment number in the Ship field.

The second page displays after the ship is entered.

The arrow in the upper left corner of the application takes the user back to the menu.



Workflow Details (2 of 3)

Transfer From

Next, the user enters, scans or searches the item number in the Item field.

The item description displays.

Then, the user enters the source subinventory in the Sub field.

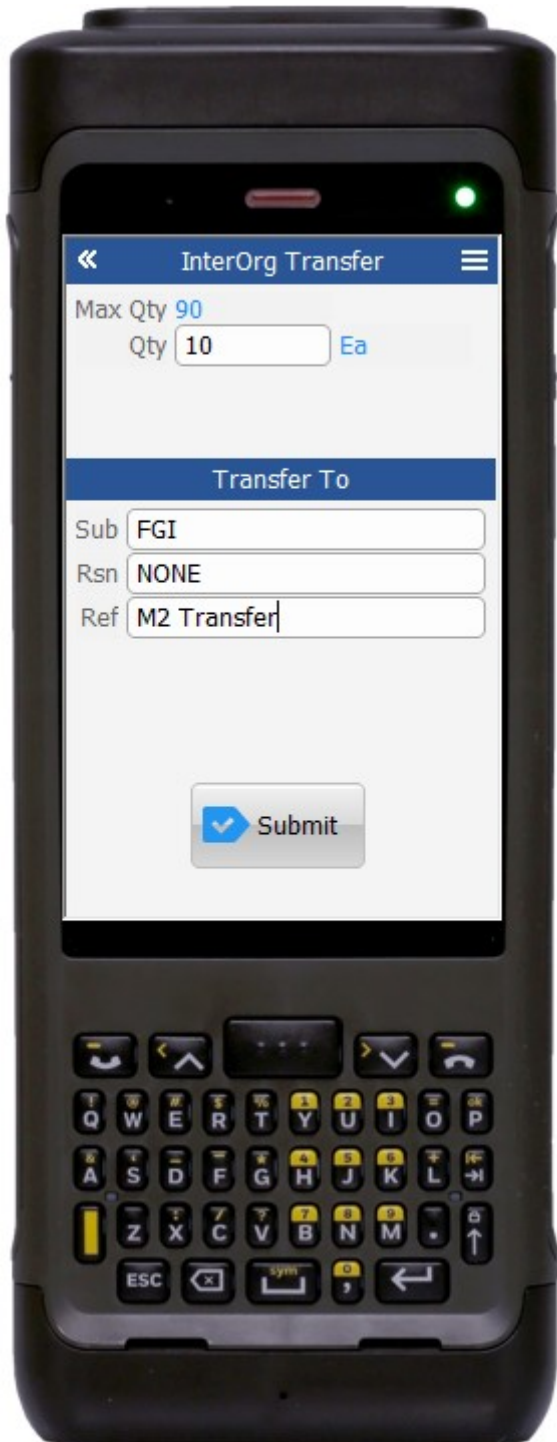
If the source subinventory is locator-enabled, then the Loc field will display, and the user will enter, scan or search the locator in the Loc field.

If the item is lot-controlled, then the Lot field will display, and the user will enter, scan or search the lot.

If the item is child-lot enabled, then the parent lot (P. Lot) field will display, and the user will enter, scan, or search the parent lot.

If the lot is grade-enabled then the Grade will display.

The double arrows in the upper left corner of the application takes the user back to the previous screen.



Workflow Details (3 of 3)

The maximum quantity on hand for the item displays in the Max Qty field.

The user enters or scans the quantity to be transferred in the Qty field.

Transaction unity of measure (UOM) displays.

If the item has a secondary UOM, then Qty 2 field will display.

If the item is serial enabled, then the Serial field will display, and the user will enter, scan, or search the Serial. The serial count will also display.

Transfer To

Next, the user enters, scans, or searches the destination subinventory, the reason code, and the transaction reference in the Sub, Rsn, and Ref fields.

If the destination subinventory is locator control enabled, then the Loc field displays and the user enters, scans or searches the Loc.

Then the user clicks on the **Submit** button to send the transaction to the ERP system.

The double arrows in the upper left corner of the application takes the user back to the previous screen.

Technical Information

The following describes the tables used for validation, search lists, or functions for a given prompt in this application.

Prompt	Validation / Search – Tables /Functions
Org	MTL_SHIPPING_NETWORK_VIEW, ORG_ORGANIZATION_DEFINITIONS
Project	PJM_PROJECTS_ALL_V
Task	PJM_TASKS_MTL_V
Item	MTL_SYSTEM_ITEMS_B_KFV
Rev	MTL_ITEM_REVISIONS_B
IblItemDesc	MTL_SYSTEM_ITEMS_B_KFV
Sub	MTL_SECONDARY_INVENTORIES, MTL_ITEM_SUB_INVENTORIES
Loc	MTL_ITEM_LOCATIONS, MTL_SECONDARY_LOCATORS
P Lot	MTL_LOT_NUMBERS
Lot	MTL_LOT_NUMBERS
Grade	MTL_LOT_NUMBERS
Max Qty	MTL_ONHAND_QUANTITIES_DETAIL
Serial	MTL_SERIAL_NUMBERS_B
Sub	MTL_SECONDARY_INVENTORIES, MTL_ITEM_SUB_INVENTORIES
Loc	MTL_ITEM_LOCATIONS, MTL_SECONDARY_LOCATORS
Rsn	MTL_TRANSACTION_REASONS
Macro	TIMII0302

Prompt	Validation / Search – Tables /Functions
Macro	MTL_TRANSACTIONS_INTERFACE, MTL_TRANSACTION_LOTS_INTERFACE, MTL_SERIAL_NUMBERS_INTERFACE, INV_TXN_MANAGER_PUB.PROCESS_TRANSACTIONS



Customization Considerations

If you are planning on creating a new version of this application or modifying it for a customer, the following questions should be considered before you start.

1. Are there serial-controlled items?
2. Are there lot-controlled items?
3. Are there child-enabled, lot-controlled items?
4. Are there plants or warehouses that are project-enabled?
5. Is grade used?
6. Is the grade is enabled for all items?

